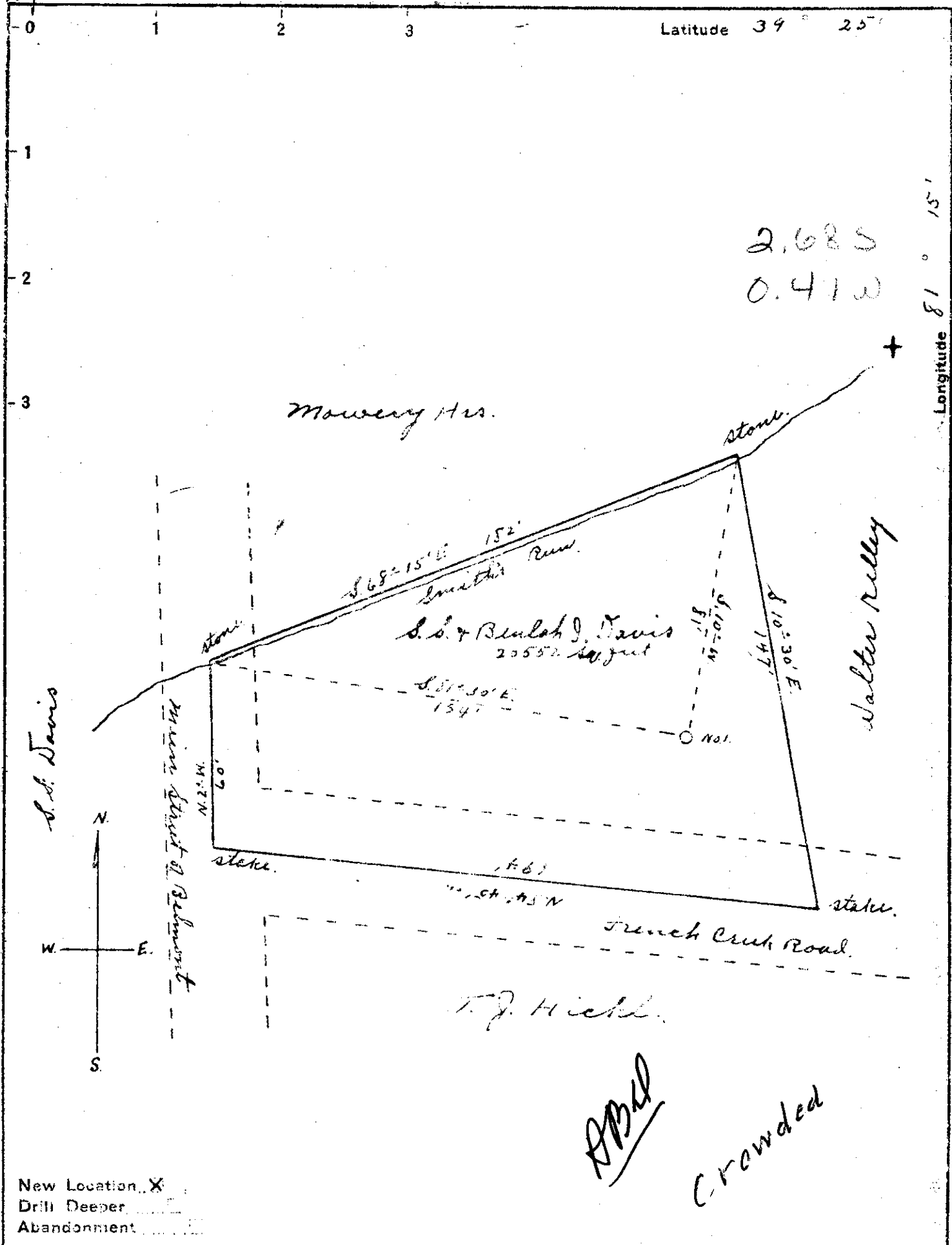


M



2,685
0.41 W

APB
Crowded

New Location, X
 Drill Deeper
 Abandonment

Company *Reynolds Bros & Others*
 Address *Route 3 St Marys W Va*
 Farm *S.S. & Beulah J. Davis*
 Tract _____ Acres *20.55* Lease No. _____
 Well (Farm) No. *1* Serial No. _____
 Elevation (Spirit Level) *620'*
 Quadrangle *Marietta*
 County *Pleasant* District *Grant*
 Engineer *Robert R. Anderson*
 By *no. 1216 with surveyor*
 Engineer's Registration No. *296*
 File No. _____ Drawing No. _____
 Date *Jan. 23 1950* Scale *1" = 40'*

STATE OF WEST VIRGINIA
 DEPARTMENT OF MINES
 OIL AND GAS DIVISION
 CHARLESTON

WELL LOCATION MAP
 FILE NO. *FLEAS-310*

+ Denotes location of well on United States Topographic Maps, scale 1 to 62,500. Latitude and longitude lines being represented by border lines as shown.
 - Denotes one inch squares on border line of original tracing.

WEST VIRGINIA DEPARTMENT OF MINES
OIL & GAS DIVISION
WELL RECORD

Permit No. Pleas 310
Marietta Quad.
Company
Address
Farm
Location
Well No.
District
Surface
Mineral
Commenced
Completed
Salt Water

Reynolds Bros.
St. Marys, R.D. #3, W.Va.
S.S. Davis Acres 1/2
Smith Run
1 Elev. 620'
Grant Pleasants County
S.S. Davis, Belmont, W.Va.
S.S. Davis
Jan. 17, 1950
Jan. 26, 1950
528'

Gas Well
CASING & TUBING

	8 1/4	40	40
	6 5/8	152	152

✓ First Sand ⁴⁸	180	250
✓ 1st Salt Sand	398	438
Slate	438	447
Sand	447	485
Slate	485	492
✓ Sand ^{2nd Salt}	492	520
Little Gas & Water	528	