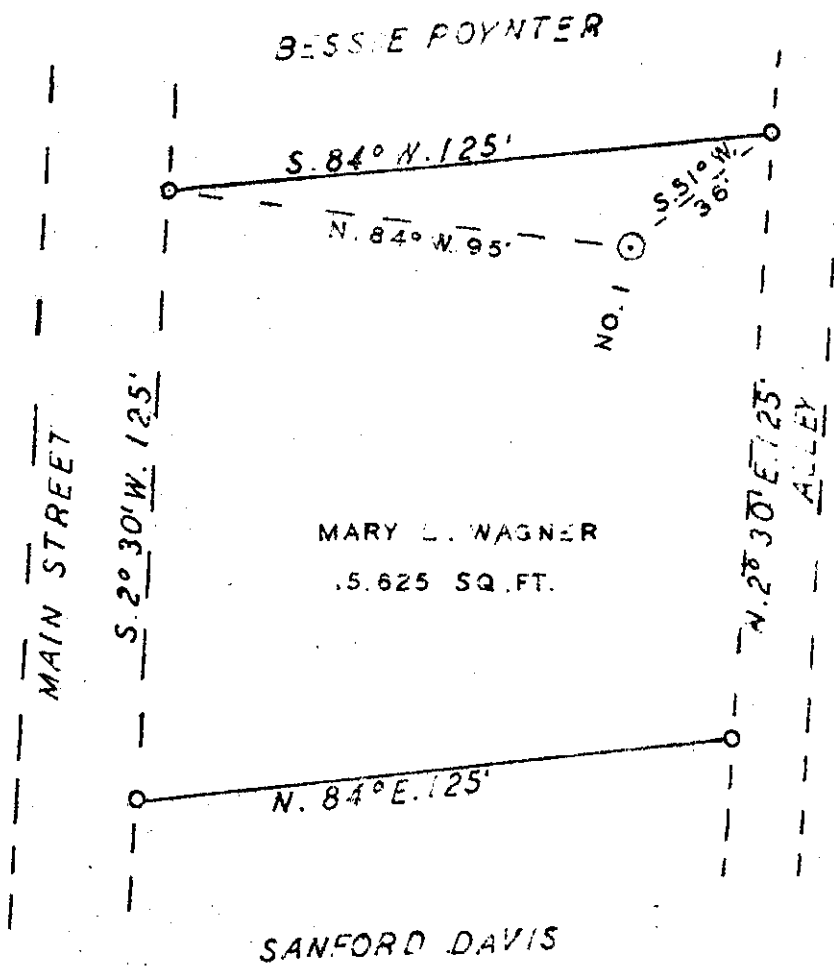


1 2 3

Latitude 39 25

Longitude 81 15



WALTER KELLY

270 S
0.51 W
+



*ADD
12/52
Crowded*

New Location
 Drill Deeper
 Abandonment

BELMONT, W. VA.

Company WILLIAM BUNGARD
 Address BOX 27, PIKE, W. VA
 Farm MARY L. WAGNER
 Tract 1 Acres 15.625 SQ. FT. Lease No.
 Well (Farm) No. 1 Serial No.
 Elevation (Spirit Level) 621' 00"
 Quadrangle MARIETTA
 County PLEASANTS District GRANT
 Surveyd by Harmer W. Myers
 Engineer George R. Clarke
 Engineer's Registration No. 102
 File No. Drawing No.
 Date FEB 14, 1950 Scale 1" = 40'

STATE OF WEST VIRGINIA
 DEPARTMENT OF MINES
 OIL AND GAS DIVISION
 CHARLESTON

WELL LOCATION MAP
 FILE NO. PLEAS-325

+ Denotes location of well on United States Topographic Maps, scale 1 to 62,500, latitude and longitude lines being represented by border lines as shown.
 - Denotes one inch spaces on border line of original tracing.

WEST VIRGINIA DEPARTMENT OF MINES
OIL & GAS DIVISION
W E L L R E C O R D

Permit No. Pleas 325
Marietta Quad.
Company
Address
Farm
Location
Well No.
District
Surface
Mineral
Commenced
Completed
Not shot
Oil
Fresh Water

William Bungard
Box 27, Pike, W. Va.
Mary L. Wagner Acres Lot #
Ohio River
#1 Elev. 622'
Grant Pleasants County
Mary L. Wagner, Belmont, W. Va.
Same
March 1, 1950
March 17, 1950

30 hbls. 1st 24 hrs.
47'

Oil Well
CASING & TUBING

| | | | |
|-------|-----------------|------------------|------------------|
| | 8 $\frac{1}{2}$ | 82 $\frac{1}{2}$ | 82 $\frac{1}{2}$ |
| 6 5/8 | 189 | 189 | 189 |
| 2 | | 580 | |

No coal

Casing not cemented

| | | | | |
|----------|-----------------------|---|-----|---------|
| Clay | Red | S | 0 | 15 |
| Gravel | Gr | H | 15 | 82 |
| Slate | Blk | S | 82 | 135 |
| Rock | Pink | S | 135 | 145 |
| Lime | Gr | H | 145 | 149 |
| Sand | Wh | H | 149 | 153 |
| Slate | Wh | S | 153 | 159 |
| Rock | Pink | S | 159 | 170 |
| Slate | Blk | S | 170 | 185 |
| Sand | Wh | H | 185 | 187 |
| Slate | Blk | S | 187 | 210 |
| Sand | Wh | H | 210 | 264 |
| Slate | Blk | S | 264 | 267 |
| Sand | Wh | H | 267 | 276 |
| Slate | Blk | S | 276 | 312 |
| Sand | Wh | H | 312 | 315 |
| Slate | Blk | S | 315 | 367 |
| Sand | Blk | H | 367 | 372 |
| Slate | Blk | S | 372 | 398 |
| Sand | Wh | H | 398 | 402 |
| Slate | Blk | S | 402 | 406 |
| Sand | Wh | H | 406 | 445 |
| S. Slate | Gr | H | 445 | 461 |
| Sand | Wh | H | 461 | 485 |
| Slate | Blk | S | 485 | 497 |
| Sand | Wh ^{2nd Set} | H | 497 | 556 oil |
| Slate | Blk | S | 556 | 559 |
| Sand | Wh | S | 559 | 586 o |
| Slate | Blk | S | 586 | 590 |

Oil 312 show
Oil 367 show
Oil 503-512 best oil
Oil 560-565
T.D. 590