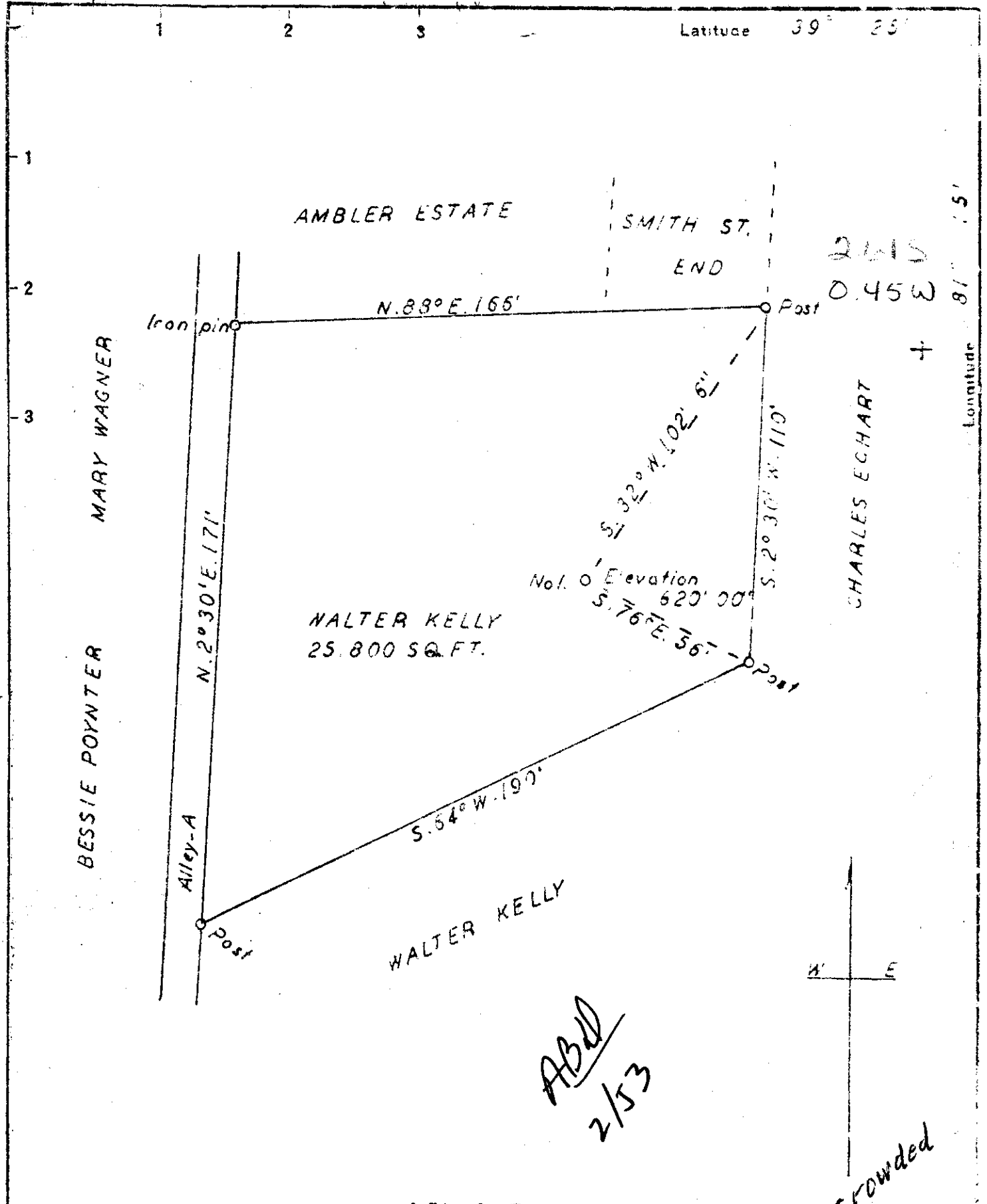


EM

Latitude 39° 25'



No. 0 Elevation 620' 00"  
 S. 76° E. 56'

ABD  
 2/53

2615  
 0.45 W

Crowded

BELMONT W. VA

New Location   
 Drill Deeper   
 Abandonment

Company WILLIAM BUNGARD  
 Address BOX 27. PIKE W. VA  
 Farm WALTER KELLY  
 Tract / 25,800 SQ. FT. Acres \_\_\_\_\_ Lease No. \_\_\_\_\_  
 Well (Farm) No. / \_\_\_\_\_ Serial No. \_\_\_\_\_  
 Elevation (Spirit Level) 620' 00"  
 Quadrangle MARIETTA  
 County PLEASANTS District GRANT  
 Survey by Home W. Myers  
 Engineer George R. Lush  
 Engineer's Registration No. 102  
 File No. \_\_\_\_\_ Drawing No. \_\_\_\_\_  
 Date MARCH 25, 1950 Scale 1" = 10'

STATE OF WEST VIRGINIA  
 DEPARTMENT OF MINES  
 OIL AND GAS DIVISION  
 CHARLESTON

WELL LOCATION MAP  
 FILE NO. PLEAS-356

+ Denotes location of well on United States Topographic Maps, scale 1 to 62,500, latitude and longitude lines being represented by border lines as shown.  
 - Denotes one inch spaces on border line of original tracing.

WEST VIRGINIA DEPARTMENT OF MINES  
OIL & GAS DIVISION  
WELL RECORD

Permit No. Pleas 356

Oil Well  
CASING & TUBING

Marietta Quad.

Company

William Bungard

Address

Box 27, Pike, W.Va.

10 56' 56'

Farm

Walter Kelly Acres Lot

6 5/8 158' 158'

Location

Five Acres Run

2 420'

Well No.

1 Elev. 620

District

Grant Pleasants County

Surface

Walter Kelly, Belmont, W.Va.

Mineral

Same

Commenced

March 16, 1950

Completed

May 11, 1950

Not shot

Oil

17 bbls. 1st 24 hrs.

Fresh Water

25'

Salt Water

325'

Gravel	Gr	H	0	56	
Slate	Gr	S	56	110	
Sand	Pink	H	110	130	
Slate	Blk	S	130	162	
Shale	Gr	S	162	176	
Slate	Blk	S	176	233	
Sand	Wh	H	233	241	
Slate	Blk	S	241	244	
Sand	Wh	H	244	250	
Slate	Gr	M	250	291	
Sand	Wh	H	291	330	
Slate	Gr	H	330	388	
Sand	Wh	H	388	428	
Slate	Blk	S	428	434	T.D.

Oil 244-50

Oil 310-15

Oil 420'