

Latitude 39° 25'

Longitude 81° 10'

3375
175

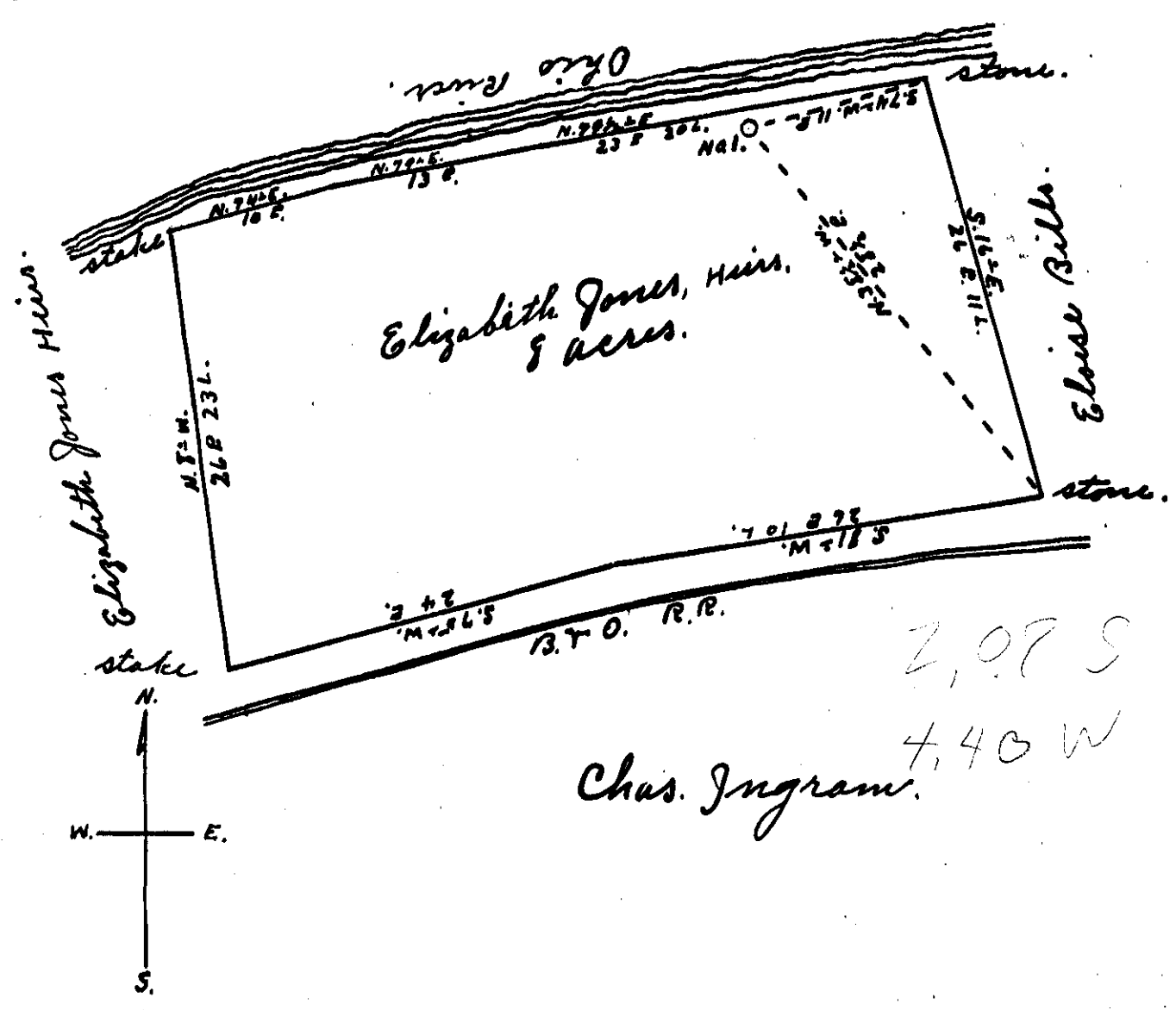
+

Ohio River
Elizabeth Jones, Heirs.
8 acres.

Eloise Bille

Chas. Ingram

2,07 S
7,40 W



New Location...
 Drill Deeper.....
 Abandonment.....

Company Chas. E. Smith
 Address Essex, W. Va.
 Farm Elizabeth Jones, Heirs.
 Tract _____ Acres 8 Lease No. _____
 Well (Farm) No. 1 Serial No. _____
 Elevation (Spirit Level) 600'
 Quadrangle St. Marys WC
 County Pleasants District Washington
 Engineer Robert R. Anderson
By Jno. Triplett, Surveyor
 Engineer's Registration No. 296
 File No. _____ Drawing No. _____
 Date May 26, 1953 Scale 1" = 10 P.

STATE OF WEST VIRGINIA
 DEPARTMENT OF MINES
 OIL AND GAS DIVISION
 CHARLESTON

WELL LOCATION MAP
 FILE NO. PLCAS-466

+ Denotes location of well on United States Topographic Maps, scale 1 to 62,500, latitude and longitude lines being represented by border lines as shown.
 - Denotes one inch spaces on border line of original tracing.

STATE OF WEST VIRGINIA
DEPARTMENT OF MINES
OIL AND GAS DIVISION

WELL RECORD

St. Marys
Permit No. PLEAS-466

Oil or Gas Well Dry Hole
(KIND)

Company C. E. Smith
Address Rt#3. St. Marys, W. Va.
Farm Jones Heirs Acres 29
Location (waters) Ohio River
Well No. 1 Elev. 600
District Washington County Pleasants
The surface of tract is owned in fee by Jones Heirs
Address St. Marys, W. Va.
Mineral rights are owned by Same parties
Address _____
Drilling commenced June 9, 1953
Drilling completed January 30, 1954
Date Shot From 1356 To 1361
With 50 Lbs Gel.
Open Flow /10ths Water in -0- Inch
/10ths Merc. in -0- Inch
Volume -0- Cu. Ft.
Rock Pressure -0- lbs. hrs.
Oil Shows bbls., 1st 24 hrs.
Fresh water Surface feet feet
Salt water feet feet

Casing and Tubing	Used in Drilling	Left in Well	Packers
Size			
16			Kind of Packer
13			
10			Size of
8 3/4	68'	No	
6 3/4	526'	No	Depth set
5 3/16	1010	No	
3			Perf. top
2			Perf. bottom
Liners Used			Perf. top
			Perf. bottom

CASING CEMENTED No SIZE _____ No. Ft. _____ Date _____

COAL WAS ENCOUNTERED AT 140 FEET _____ INCHES
_____ FEET _____ INCHES
_____ FEET _____ INCHES
_____ FEET _____ INCHES

Formation	Color	Hard or Soft	Top	Bottom	Oil, Gas or Water	Depth Found	Remarks
Soil	gray	soft	0	30			
gravel	gray	hard	30	68			68' Drive pipe
sand	gray	hard	68	72			
sand	black	hard	72	80			
sand	gray	hard	80	92			Broken
shale	gray	soft	92	140			
coal	black	soft	140	145			
shale	gray	soft	145	170			
sand	blue	hard	170	194			
shale	green	hard	194	208			
shale	blue	hard	208	212			
shale	green	hard	212	222			
shale	gray	hard	222	228			
sand	brown	hard	228	268	show oil		
shale	gray	hard	268	320	show oil		
shale	gray	medium	320	350			sandy
shale	black	soft	350	390			
coal	black	soft	390	393			slaty
shale	gray	hard	393	418			
shale	white	hard	418	425	show oil		
sand	gray	hard	425	480	show oil		
shale	gray	hard	480	515			
sand	gray	hard	515	522			
shale	gray	hard	522	529			
sand	white	hard	529	575			
shale	gray	hard	575	582			
sand	white	hard	582	624			
S. Stone	gray	hard	624	660			
Shells	gray	hard	660	667			
shale	black	soft	667	678			
sand	gray	soft	678	780			
sand	gray	hard	780	940			In Jun
shale	gray	hard	940	948			
sand	white	hard	948	993			Squaw
shale	gray	soft	993	1350			
sand	gray	hard	1350	1356	Gas show		Berea
shale	black	soft	1356	1385	1350-56		
				Total depth			

