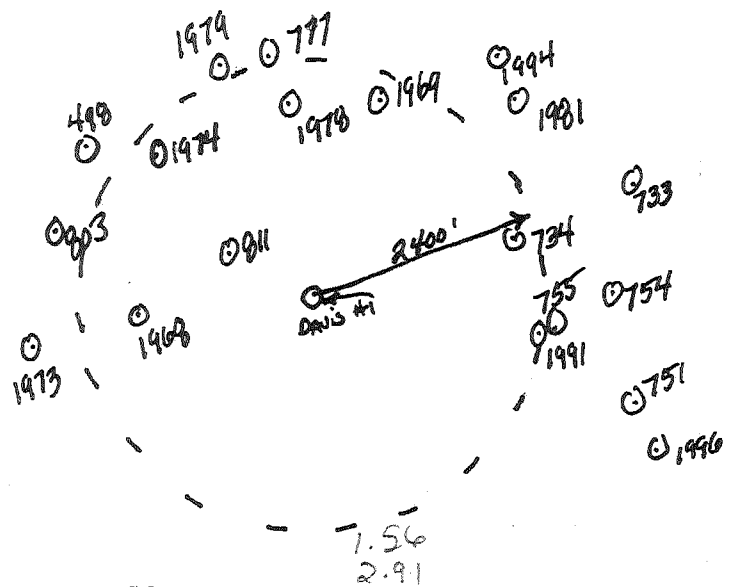
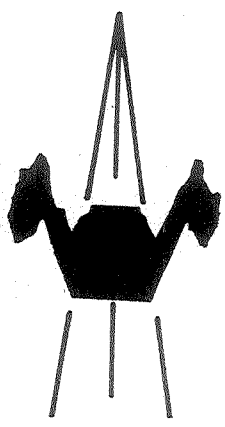
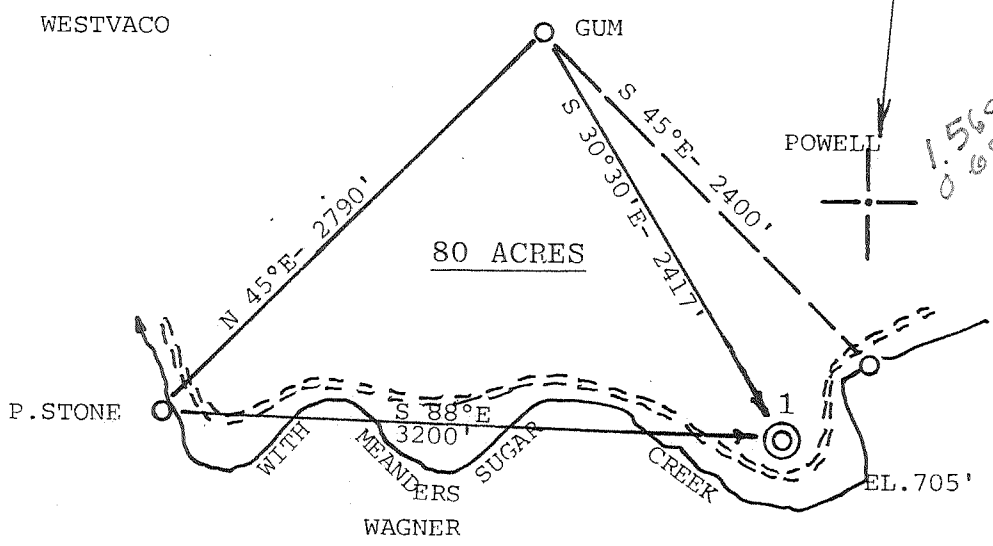


Jennil
4/19/91

Latitude 39° 25' 00"

8200' SOUTH
3620' WEST

Longitude 81° 02' 30"



ACCURACY: 1 / 200'

New Location

Drill Deeper

Abandonment

Fracture

Redrill

Other

Formation GORDON

Est. Depth 2450'

Oil

Gas

Other

Source of Elevation SHAWNEE ROAD INT. W/ SUGAR CRK. RD. (653')

I, the undersigned, hereby certify that this map is correct to the best of my knowledge and belief and shows all the information required by paragraph 6 of the rules and regulations of the oil and gas section of the mining laws of West Virginia.

Company AMERICAN PIPELINE & EXPLORATION CO. 442

Address PO BOX 730, ST. MARYS, W.V. 26170

Surface Owner O.C. DAVIS

Mineral Owner FRIEND HEIRS

Well No. 1 Acres 80

Elevation 705' St Marys Ec

Quadrangle BENS RUN Series 7.5'

County PLEASANTS District UNION S

e 8/14/79 Scale 1" = 1000'

STATE OF WEST VIRGINIA
DEPARTMENT OF MINES
OIL AND GAS DIVISION
CHARLESTON

WELL LOCATION MAP

API Well No. 47 - 073 - 0802-Frae

STATE COUNTY PERMIT

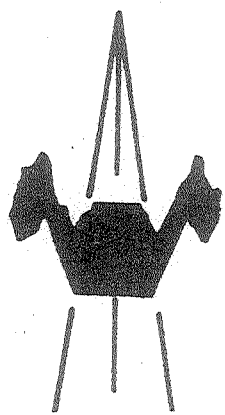
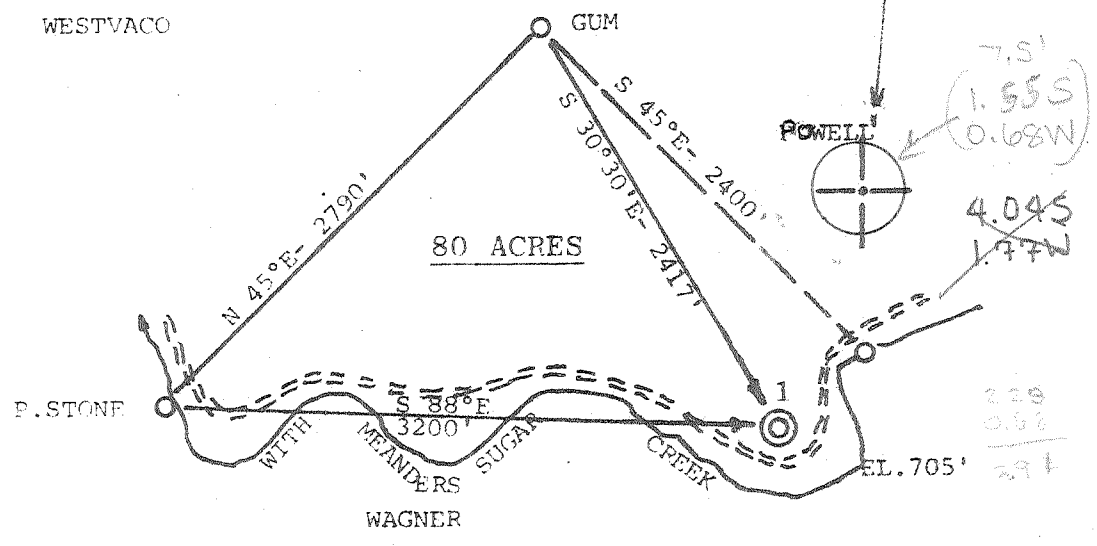
+ Denotes location of well on United States Topographic Maps.

Engineer CHET WATERMAN APR 26 1991

Engineer's Registration No. 3788 File No. 79-556

8200' SOUTH
3620' WEST

Longitude 81° 02' 30"



ACCURACY: 1/200'

- New Location
- Drill Deeper
- Abandonment
- Fracture
- Redrill
- Other

Formation GORDON Oil
 Est. Depth 2450' Gas
 Other

Source of Elevation SHAWNEE ROAD INT. W/ SUGAR CRK. (653')
 I, the undersigned, hereby certify that this map is correct to the best of my knowledge and belief and shows all the information required by paragraph 5 of the rules and regulations of the oil and gas section of the mining laws of West Virginia.

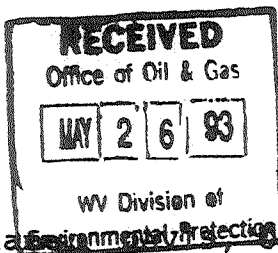
Company L & M PETROLEUM, INC.
 Address MARIETTA, OHIO
 Surface Owner O.C. DAVIS
 Mineral Owner FRIEND HEIRS

Well No. 1 Acres 80
 Elevation 705' ST MARYS 15'
 Quadrangle BENS RUN Series 7.5'
 County PLEASANTS District UNION
 Date 8/14/79 Scale 1" = 1000'

STATE OF WEST VIRGINIA
 DEPARTMENT OF MINES
 OIL AND GAS DIVISION
 CHARLESTON

WELL LOCATION MAP
 47 - **073** - **0802**
 STATE COUNTY PERMIT

+ Denotes location of well on United States Topographic Maps.
 Engineer **CHET WATERMAN** NOV 14 1979
 Engineer's Registration No. 3788 File No. 79-556



State of West Virginia
DEPARTMENT OF ENERGY
Division of Oil and Gas

Well Operator's Report of Well Work

Farm name: Environmentally Protection C.

Operator Well No.: DAVIS HEIRS 1

LOCATION: Elevation: 705.00 Quadrangle: BENS RUN

District: UNION County: PLEASANTS
Latitude: 8200 Feet South of 39 Deg. 25Min. 0 Sec.
Longitude 3620 Feet West of 81 Deg. 2 Min. 30 Sec.

Company: AMERICAN PIPELINE & EXPLO.
210 SECOND ST. P.O. BOX 730
ST. MARYS, WV 26170-0730

Agent: BERNARD TICE

Inspector: SAMUEL HERSMAN
Permit Issued: 04/24/91
Well work Commenced: 5/12/91
Well work Completed: 5/14/91
Verbal Plugging
Permission granted on: N/A
Rotary Cable Rig
Total Depth (feet) 2471
Fresh water depths (ft) 150
Salt water depths (ft) 1500

Is coal being mined in area (Y/N)? N
Coal Depths (ft): N/A

Casing & Tubing Size	Used in Drilling	Left in Well	Cement Fill Up Cu. Ft.
8 5/8"	250	250	120
4 1/2"	2679	2679	330

OPEN FLOW DATA

Producing formation Big Injun Pay zone depth (ft) 1646-1758
Gas: Initial open flow 50 MCF/d Oil: Initial open flow 1 Bbl/d
Final open flow 40 MCF/d Final open flow 1 Bbl/d
Time of open flow between initial and final tests 48 Hours
Static rock Pressure 460 psig (surface pressure) after 24 Hours

Second producing formation _____ Pay zone depth (ft) _____
Gas: Initial open flow _____ MCF/d Oil: Initial open flow _____ Bbl/d
Final open flow _____ MCF/d Final open flow _____ Bbl/d
Time of open flow between initial and final tests _____ Hours
Static rock Pressure _____ psig (surface pressure) after _____ Hours

NOTE: ON BACK OF THIS FORM PUT THE FOLLOWING: 1). DETAILS OF PERFORATED INTERVALS, FRACTURING OR STIMULATING, PHYSICAL CHANGE, ETC. 2). THE WELL LOG WHICH IS A SYSTEMATIC DETAILED GEOLOGICAL RECORD OF ALL FORMATIONS, INCLUDING COAL ENCOUNTERED BY THE WELLBORE.

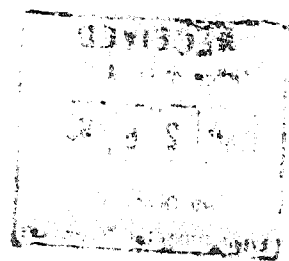
For: AMERICAN PIPELINE & EXPLORATION CO.

Reviewed TMG
Recorded _____

By: Bernard Tice JUN 2 - 1993
Date: 5-18-93

Set Plug at 2471

Perf - 1646 to 1650 - 5 Perf
1758 to 1762 - 6 Perf



Fraced with 1,000 bbl H2O and 24,000# 20/40 Sand

CORRECTED COPY



IV-35
(Rev 8-81)

Date 3/2/82
Operator's _____
Well No. 1
Farm Davis/Wagner
API No. 47 - 073 - 0802

State of West Virginia
Department of Mines
Oil and Gas Division

WELL OPERATOR'S REPORT
OF
DRILLING, FRACTURING AND/OR STIMULATING, OR PHYSICAL CHANGE

WELL TYPE: Oil / Gas / Liquid Injection ___ / Waste Disposal ___ /
(If "Gas," Production ___ / Underground Storage ___ / Deep ___ / Shallow ___ /)

LOCATION: Elevation: 653 Watershed Sugar Creek
District: Union County Pleas. Quadrangle Bens Run

COMPANY L&M Petroleum Co.
ADDRESS P.O. Box 89, Reno, OH 45773
DESIGNATED AGENT David Clovis
ADDRESS Box 288, Parkersburg, WV 26101
SURFACE OWNER O.C. Davis
ADDRESS St. Marys, WV
MINERAL RIGHTS OWNER O.C. Davis & Friend
ADDRESS St. Marys, WV Wagner
OIL AND GAS INSPECTOR FOR THIS WORK _____

Phil Tracey ADDRESS Rt. 23, Alma, WV
PERMIT ISSUED 1979
DRILLING COMMENCED 11/6/79
DRILLING COMPLETED 2/1/80

IF APPLICABLE: PLUGGING OF DRY HOLE ON
CONTINUOUS PROGRESSION FROM DRILLING OR
REWORKING. VERBAL PERMISSION OBTAINED
ON _____

Casing & Tubing	Used in Drilling	Left in Well	Cement fill up Cu. ft.
Size 20-16 Cond.			
13-10"			
9 5/8			
8 5/8	250'	250	
7			
5 1/2			
4 1/2	2679	2679	330 sx
3			
2			
Liners used			

GEOLOGICAL TARGET FORMATION Gordon Depth 2538-2550 feet
Depth of completed well 3015 feet Rotary / Cable Tools _____
Water strata depth: Fresh _____ feet; Salt _____ feet
Coal seam depths: _____ Is coal being mined in the area? _____

OPEN FLOW DATA

Producing formation Gordon Pay zone depth 2538-2550 feet
Gas: Initial open flow 100 Mcf/d Oil: Initial open flow 0 Bbl/d
Final open flow 75 Mcf/d Final open flow 0 Bbl/d
Time of open flow between initial and final tests 6 hours
Static rock pressure _____ psig (surface measurement) after _____ hours shut in
(If applicable due to multiple completion--)
Second producing formation _____ Pay zone depth _____ feet
Gas: Initial open flow _____ Mcf/d Oil: Initial open flow _____ Bbl/d
Final open flow _____ Mcf/d Oil: Final open flow _____ Bbl/d
Time of open flow between initial and final tests _____ hours
Static rock pressure _____ psig (surface measurement) after _____ hours shut in

(Continue on reverse side)

Pleas. - 0802

MAY 31 1982

DETAILS OF PERFORATED INTERVALS, FRACTURING OR STIMULATING, PHYSICAL CHANGE, ETC.

Frac with 55MG fluid, 60M# sand at 1850 psig, 29BPM, w/170MSCF Nitrogen
12 shots from 2528-2531

WELL LOG

FORMATION	COLOR	HARD OR SOFT	TOP FEET	BOTTOM FEET	REMARKS
					Including indication of all fresh and salt water, coal, oil and gas
Clay			0	11	
Blue Rock			11	36	
Red Rock			36	80	
Lime			80	94	
Sand Rock			94	111	
Slate			111	121	
Lime			121	130	
Slate			130	140	
Lime			140	146	
Slate			146	167	
Red Rock			167	196	
Slate			196	205	
Lime & Shells			205	210	
Slate			210	245	
Red Rock			245	260	
Slate			260	275	
Red Rock			275	290	
Sand			290	300	
Slate			300	340	
Red Rock			340	360	
Slate			360	400	
Slate & Shell			400	445	
Lime & Shale			445	500	
Big Red			500	565	
Sand			565	580	
Black Slate			580	645	
Pink Rock			645	660	
Lime			660	690	
Cow Run			690	704	
White Slate			704	730	
Slate			730	762	
Sand			762	772	
Slate			772	805	
Black Shale			805	810	
Slate			810	840	
Red Rock			840	850	
Slate			850	875	

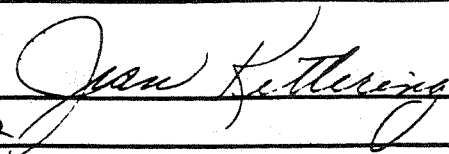
(Attach separate sheets as necessary)

L&M Petroleum Co.

Well Operator

By: Jean Kettering

Date: 3-3-82



Note: Regulation 2.02(i) provides as follows:

"The term 'log' or 'well log' shall mean a systematic detailed geological record of all formations, including coal, encountered in the drilling of a well."

WELL NAME & NO.: Davis/Wagner #1

FORMATION	TOP FEET	BOTTOM FEET
Sand	875	905
Lime	905	920
White Slate	920	925
Lime	925	950
1st. Salt Sand	950	1040
Brown Shale	1040	1050
Lime	1050	1065
White Slate	1065	1080
Black Slate	1080	1115
Sand	1115	1135
Slate	1135	1190
Black Slate	1190	1205
Sandy Lime	1205	1240
2nd Salt Sand	1240	1290
Slate	1290	1300
Black Lime	1300	1312
Black Shale	1312	1380
Sand	1380	1398
Break	1398	1400
Sand	1400	1420
Black Shale	1420	1450
Maxon	1450	1475
Break	1475	1505
Lime	1505	1512
Sand	1512	1540
Keener	1540	1565
Shale	1565	1585
Injun Sand	1585	1645
Shale	1645	1667
Lime	1667	1689
Slate	1689	1712
Lime	1712	1733
Shale & Shells	1733	1856
Slate	1856	1935
Shale & Slate	1935	1950
Shale	1950	1990
Lime	1990	2018
Shale	2018	2045
Slate	2045	2065
Lime & Shale	2065	2100
Coffe Shale	2100	2119
Berea	2119	2150
Shale	2150	2215
Shale	2215	2267
Shale	2400	2470
Shale	2470	2480
Sandstone	2480	2500
Shale	2500	2580
Shale	2580	2615
Shale	2615	2642
Siltstone	2642	2670
Shale	2670	2700
Shale	2700	2750
Slate	2750	2800
Shale	2800	2853
Slate	2853	2903
Shale	2903	2968
Shale	2968	2989
Shale	2989	3015

PLANS. - 0802

MAY 31 1903



IV-35
(Rev 8-81)

Date 3/2/82
Operator's _____
Well No. 1
Farm Davis/Wagner
API No. 47 - 073 - 0802

State of West Virginia
Department of Mines
Oil and Gas Division

WELL OPERATOR'S REPORT
OF
DRILLING, FRACTURING AND/OR STIMULATING, OR PHYSICAL CHANGE

WELL TYPE: Oil X / Gas X / Liquid Injection ___ / Waste Disposal ___ /
(If "Gas," Production ___ / Underground Storage ___ / Deep ___ / Shallow ___ /)

LOCATION: Elevation: 653 Watershed Sugar Creek
District: Union County Pleas. Quadrangle Bens Run

COMPANY L&M Petroleum Co.
ADDRESS P.O. Box 89, Reno, OH 45773
DESIGNATED AGENT David Clovis
ADDRESS Box 288, Parkersburg, WV 26101
SURFACE OWNER O.C. Davis
ADDRESS St. Marys, WV
MINERAL RIGHTS OWNER O.C. Davis & Friend
ADDRESS St. Marys, WV Wagner
OIL AND GAS INSPECTOR FOR THIS WORK _____
Phil Tracey ADDRESS Rt. 23, Alma, WV
PERMIT ISSUED 1979
DRILLING COMMENCED 11/6/79
DRILLING COMPLETED 2/1/80

Casing Tubing Size Cond.	Used in Drilling	Left in Well	Cement fill up Cu. ft.
20-16			
13-10"			
9 5/8			
8 5/8	250'	250	
7			
5 1/2			
4 1/2	2679	2679	330 sx
3			
2			
Liners used			

GEOLOGICAL TARGET FORMATION Gordon Depth 2538-2550 feet
Depth of completed well 3015 feet Rotary X / Cable Tools _____
Water strata depth: Fresh _____ feet; Salt _____ feet
Coal seam depths: _____ Is coal being mined in the area? _____

OPEN FLOW DATA
Producing formation Gordon Pay zone depth 2538-2550 feet
Gas: Initial open flow 100 Mcf/d Oil: Initial open flow 0 Bbl/d
Final open flow 75 Mcf/d Final open flow 0 Bbl/d
Time of open flow between initial and final tests 6 hours
Static rock pressure _____ psig (surface measurement) after _____ hours shut in
(If applicable due to multiple completion--)
Second producing formation _____ Pay zone depth _____ feet
Gas: Initial open flow _____ Mcf/d Oil: Initial open flow _____ Bbl/d
Final open flow _____ Mcf/d Oil: Final open flow _____ Bbl/d
Time of open flow between initial and final tests _____ hours
Static rock pressure _____ psig (surface measurement) after _____ hours shut in

DETAILS OF PERFORATED INTERVALS, FRACTURING OR STIMULATING, PHYSICAL CHANGE, ETC.

Frac with 55MG fluid, 60M# sand at 1850 psig, 29BPM, w/170MSCF Nitrogen
12 shots from 2528-2531

WELL LOG

FORMATION	COLOR	HARD OR SOFT	TOP FEET	BOTTOM FEET	REMARKS Including indication of all fresh and salt water, coal, oil and gas
Clay			0	11	
Blue Rock			11	36	
Red Rock			36	80	
Lime			80	94	
Sand Rock			94	111	
Slate			111	121	
Lime			121	130	
Slate			130	140	
Lime			140	146	
Slate			146	167	
Red Rock			167	196	
Slate			196	205	
Lime & Shells			205	210	
Slate			210	245	
Red Rock			245	260	
Slate			260	275	
Red Rock			275	290	
Sand			290	300	
Slate			300	340	
Red Rock			340	360	
Slate			360	400	
Slate & Shell			400	445	
Lime & Shale			445	500	
Big Red			500	565	
Sand			565	580	
Black Slate			580	645	
Pink Rock			645	660	
Lime			660	690	
Cow Run			690	704	
White Slate			704	730	
Slate			730	762	
Sand			762	772	
Slate			772	805	
Black Shale			805	810	
Slate			810	840	
Red Rock			840	850	
Slate			850	875	

(Attach separate sheets as necessary)

L&M Petroleum Co.

Well Operator

By: Jean Kettering

Date: 3-3-82

Note: Regulation 2.02(i) provides as follows:
"The term 'log' or 'well log' shall mean a systematic detailed geological record of all formations, including coal, encountered in the drilling of a well."

WELL NAME & NO.: Davis/Wagner #1

FORMATION	TOP FEET	BOTTOM FEET
Sand	875	905
Lime	905	920
White Slate	920	925
Lime	925	950
1st. Salt Sand	950	1040
Brown Shale	1040	1050
Lime	1050	1065
White Slate	1065	1080
Black Slate	1080	1115
Sand	1115	1135
Slate	1135	1190
Black Slate	1190	1205
Sandy Lime	1205	1240
2nd Salt Sand	1240	1290
Slate	1290	1300
Black Lime	1300	1312
Black Shale	1312	1380
Sand	1380	1398
Break	1398	1400
Sand	1400	1420
Black Shale	1420	1450
Maxon	1450	1475
Break	1475	1505
Lime	1505	1512
Sand	1512	1540
Keener	1540	1565
Shale	1565	1585
Injun Sand	1585	1645
Shale	1645	1667
Lime	1667	1689
Slate	1689	1712
Lime	1712	1733
Shale & Shells	1733	1856
Slate	1856	1935
Shale & Slate	1935	1950
Shale	1950	1990
Lime	1990	2018
Shale	2018	2045
Slate	2045	2065
Lime & Shale	2065	2100
Coffe Shale	2100	2119
Berea	2119	2150
Shale	2150	2215
Shale	2215	2267
Shale	2400	2470
Shale	2470	2480
Sandstone	2480	2500
Shale	2500	2580
Shale	2580	2615
Shale	2615	2642
Siltstone	2642	2670
Shale	2670	2700
Shale	2700	2750
Slate	2750	2800
Shale	2800	2853
Slate	2853	2903
Shale	2903	2968
Shale	2968	2989
Shale <i>Upper Dew. undiff. (40)</i>	2989	<u>3015</u>

*3015
1645
1370 expl. #18*

*3015
2150
86.5*