

INSTRUCTIONS

39° 22' 30"

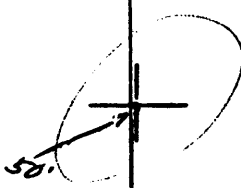
1) Attach a photo copy of the location of the well on a 7.5 minute Quadrangle with the corresponding Longitude and Latitude.

2) Designate the location of the well with the symbol (+).

81° 02' 30" ← 11,500' →

2.255
2.245

7.5



81° 00'

I, the undersigned, hereby certify that this plat is correct to the best of my knowledge and belief.

SIGNED D. L. Horner, Sr.

TITLE President

18354

Elroy Wagner

DATE 4-19, 19 93

OPERATORS WELL NO. 3

API WELL NO. 47-073-2132

STATE OF WEST VIRGINIA
DEPARTMENT OF ENERGY
OIL AND GAS DIVISION

WELL TYPE: OIL GAS Gas INJECTION WASTE DISPOSAL
(if "GAS" PRODUCTION STORAGE DEEP SHALLOW

LOCATION: ELEVATION 968' WATER SHED Rock Run
DISTRICT Lafayette 3 COUNTY Pleasants
QUADRANGLE Ellenboro 337

SURFACE OWNER McCullough Heirs ACREAGE 176 3/4

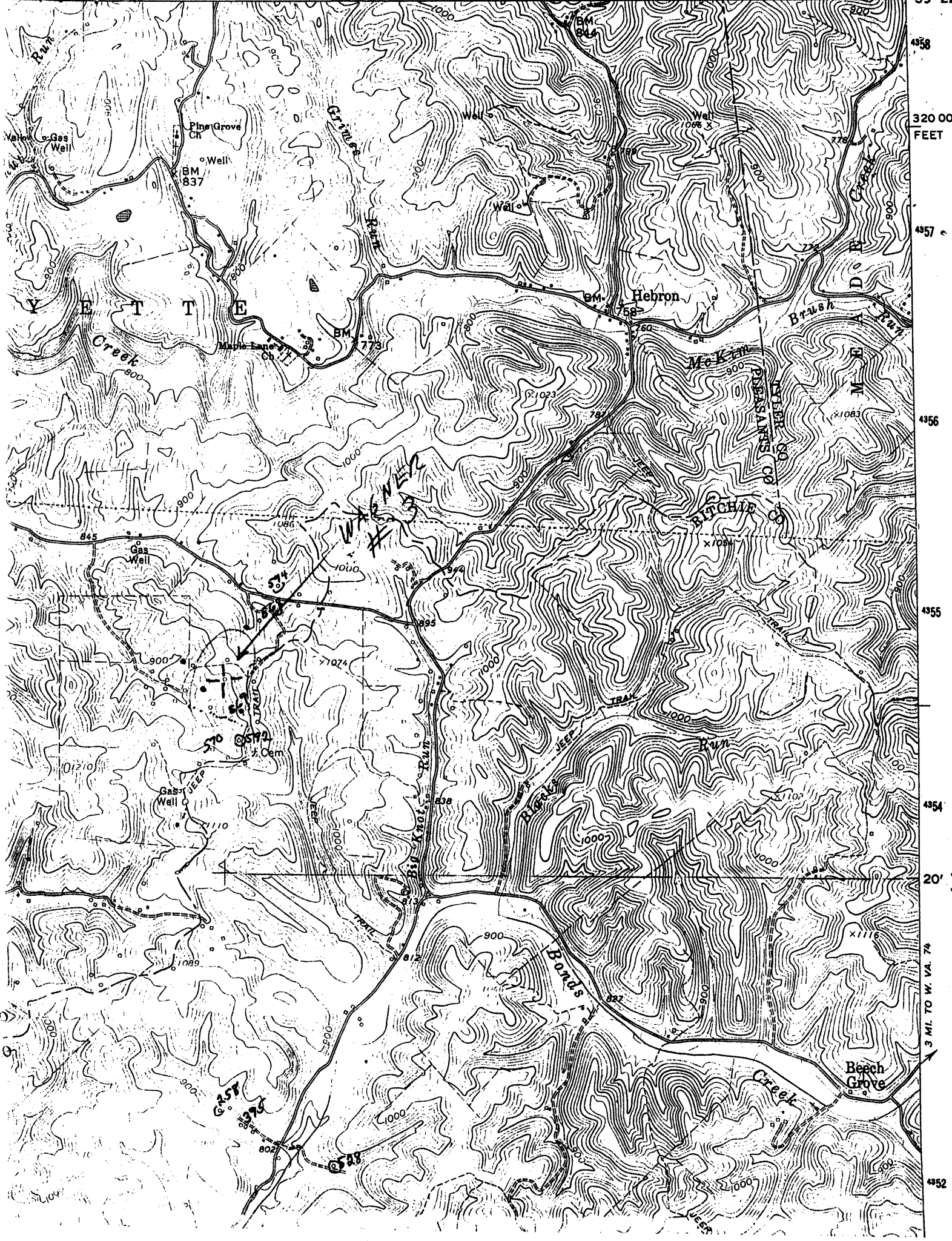
OIL & GAS ROYALTY OWNER Wagner Heirs LEASE ACREAGE 176 3/4
LEASE NO. _____

PRODUCING FORMATION Keener TOTAL DEPTH 1875'

WELL OPERATOR Big Knot Oil Co. DESIGNATED AGENT Larry Horner, Sr.

ADDRESS: 411 Grey Street ADDRESS 411 Grey Street
Pennsboro, WV Pennsboro, WV

Pennsboro 3 28 1993



4958
320 000
FEET
4957
4956
4955
4954
20'
3 MI. TO W. VA. 74
4952

1111

1111-760

ELROY WAGNER NO. 3

C O P Y

COMMENCED: July 16, 1902

Top Sand	1840	ft.
Gas	1845	"
Oil	1855	"
Total Depth	1875	"

CASING:

10"	260	ft.	Pulled	260	ft.
8-1/4"	1240	"	"	1240	"
6-5/8"	1720	"	"		"

SHOTS:

August 9	20	qts.
August 29	60	"
Sept. 22	110	"
Oct. 7	210	"

July, 1919 20 " 10 ft. shell 6 ft. anchor 1865 ft. when shot
 Depth of shot from 1850 ft. to 1860 ft. Tubed at 1856 1/2 ft.

March 11, 1933-Well leaking water at 840 ft. Put in 90 ft. 2 in. of
 5-3/16" liner with double packers. Top of liner 800 f
 bottom of liner 890 ft.; 27 turns made on screw down p
 on top. - Sexton.

April 17, 1933-Pulled out 5-3/16" liner with double packers and run
 liner with 5-3/16" packer from top of hole to 934 ft.
 Set packer at 934 ft. Lowered casinghead and tubing
 7 in. - Sexton.

May 13, 1953-Raised tubing 18" - E. B. Lamp.