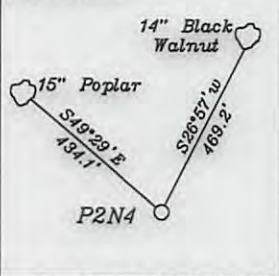
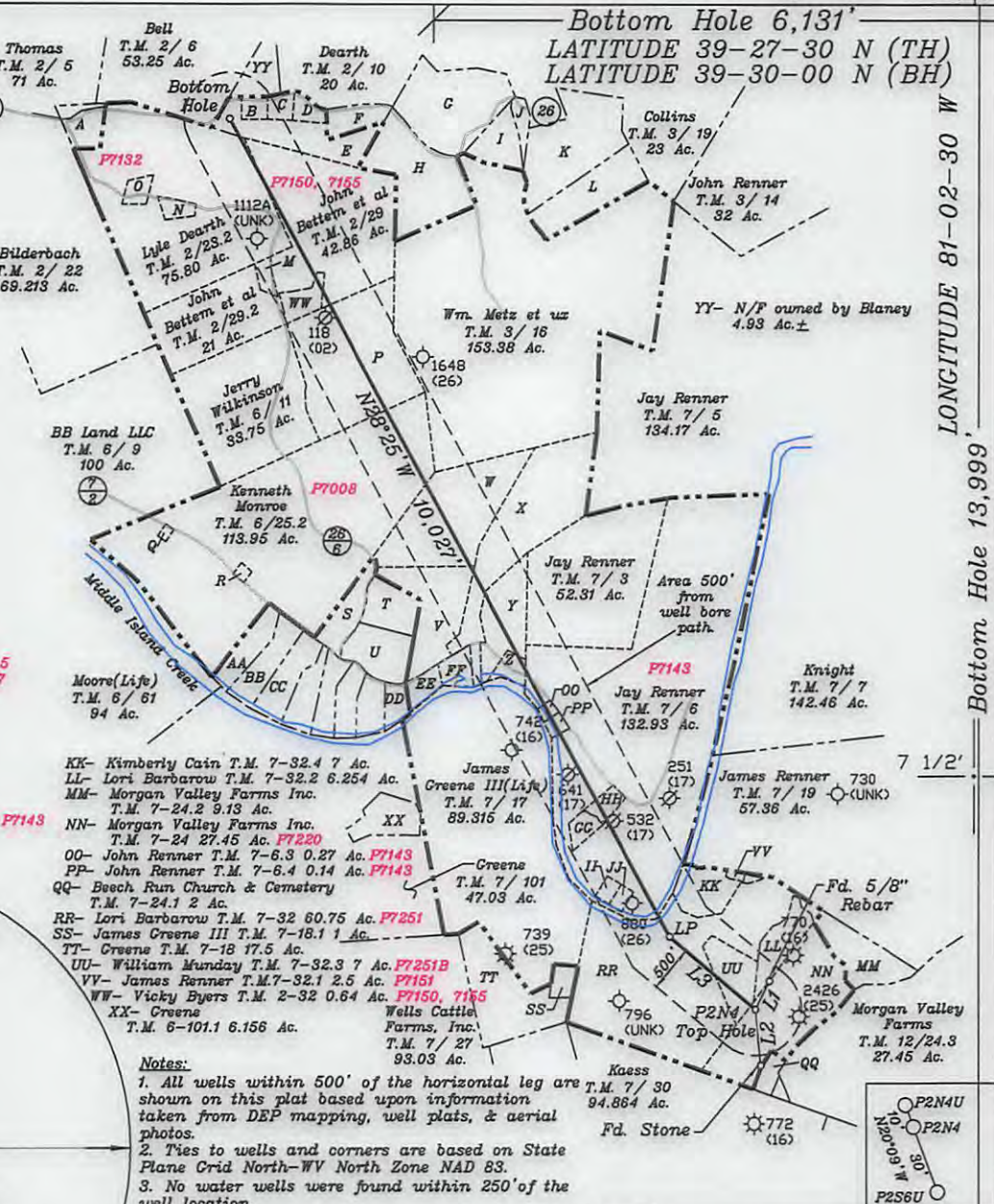
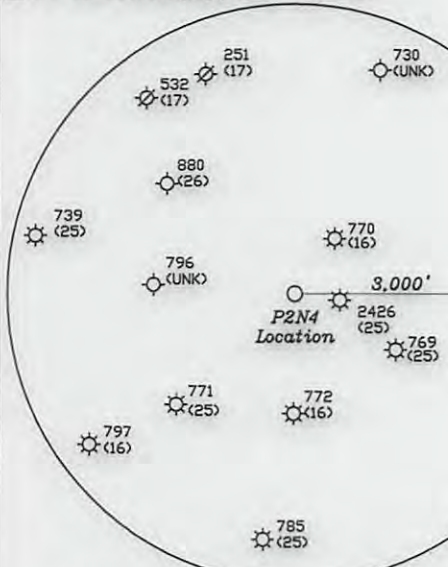


References:



- A- Bennett T.M. 2-23.3 0.53 Ac.
- B- Lyle Dearth T.M. 2-9 1.55 Ac.
- C- Lyle Dearth T.M. 2-9.4 1.38 Ac.
- D- Gary Taylor T.M. 2-11 & 9.3 2.5 Ac.
- E- Gary Taylor T.M. 2-9.2 22.169 Ac. **F7147**
- F- Watkins T.M. 2-9.5 4.231 Ac.
- G- Dearth T.M. 3-16.1 15 Ac.
- H- Dearth T.M. 3-16.3 19.04 Ac.
- I- Johnson T.M. 3-16.2 6.57 Ac.
- J- Carpenter T.M. 3-18 1.5 Ac.
- K- Carpenter T.M. 3-17 15.94 Ac.
- L- Collins T.M. 3-20 15.14 Ac.
- M- Gene Parsons T.M. 2-29.1 1.5 Ac.
- N- Robert Kemp T.M. 2-23 1.55 Ac.
- O- Lyle Dearth II T.M. 2-23.1 1 Ac.
- P- Alex Haught T.M. 6-12 38.25 Ac. **F7151**
- Q- Kenneth Monroe T.M. 6-25 0.54 Ac.
- R- Kenneth Monroe T.M. 6-25.1 0.51 Ac.
- S- Perkins T.M. 6-102.6 5.8 Ac.
- T- Young T.M. 6-102.9 6.276 Ac.
- U- Perkins T.M. 6-102.8 8.01 Ac.
- V- James Young T.M. 7-1.5 14.80 Ac. **F7007**
- W- James Nester T.M. 7-1 26.61 Ac. **F7012**
- X- Mark Kaplan et al T.M. 7-1.2 29.88 Ac. **F7015**
- Y- Mark Kaplan et al T.M. 7-1.4 10.78 Ac. **F7017**
- Z- Jesse Higgins T.M. 7-1.1 2.03 Ac. **F7014**
- AA- Perkins T.M. 6-102.1 5.59 Ac.
- BB- Perkins T.M. 6-102.3 6.38 Ac.
- CC- Perkins T.M. 6-102 4.9 Ac.
- DD- Stevenson T.M. 6-102.2 2.47 Ac.
- EE- Mark Kaplan et al T.M. 7-1.6 2.45 Ac.
- FF- Mark Kaplan et al T.M. 7-1.3 2.76 Ac.
- GG- Ronald Morgan T.M. 7-6.5 2.62 Ac.
- HH- Darren Harman(Life) T.M. 7-6.1E 2.038 Ac. **F7143**
- II- John Parsons(Life) T.M. 7-6.1 1 Ac.
- JJ- John Parsons(Life) T.M. 7-6.2 1 Ac.



**Notes:**  
 1. All wells within 500' of the horizontal leg are shown on this plat based upon information taken from DEP mapping, well plats, & aerial photos.  
 2. Ties to wells and corners are based on State Plane Crid North-WV North Zone NAD 83.  
 3. No water wells were found within 250' of the well location.  
 4. No dwellings or buildings were found within 625' from the center of the proposed pad. No perennial stream is located within 100' of LOD. No producing trout stream located within 300' of LOD.

NUMBER	DIRECTION	DISTANCE
L1	S26°42'W	342'
L2	N21°42'W	467'
L3	N49°59'W	1,215'

**Top Hole**  
 Geo NAD 83- 39.435485 N, 81.042615 W  
 UTM NAD 83(Meters)-4365105.54 N, 496332.66 E  
 UTM NAD 83(Feet)-1432188.75 N, 1628384.72 E

**Landing Point**  
 Geo NAD 83- 39.437586 N, 81.045955 W  
 UTM NAD 83(Meters)-4365338.77 N, 496045.28 E  
 UTM NAD 83(Feet)-14321948.96 N, 1627441.89 E

**Bottom Hole**  
 Geo NAD 83- 39.461568 N, 81.063391 W  
 UTM NAD 83(Meters)-4368001.28 N, 494546.67 E  
 UTM NAD 83(Feet)-14330684.22 N, 1622525.21 E

(+) DENOTES LOCATION OF WELL ON UNITED STATES TOPOGRAPHIC MAPS

FILE NO. \_\_\_\_\_  
 DRAWING NO. 1  
 SCALE 1" = 2000'  
 MINIMUM DEGREE OF ACCURACY 1 in 200  
 PROVEN SOURCE OF ELEVATION GPS  
submeter unit

I THE UNDERSIGNED, HEREBY CERTIFY THAT THIS PLAT IS CORRECT TO THE BEST OF MY KNOWLEDGE AND BELIEF AND SHOWS ALL THE INFORMATION REQUIRED BY LAW AND THE RULES ISSUED AND PRESCRIBED BY THE DEPARTMENT OF ENVIRONMENTAL PROTECTION.

(SIGNED) David E. Jackson  
 R.P.E. \_\_\_\_\_ P.S. 708



STATE OF WEST VIRGINIA  
 Division of Environmental Protection  
 OFFICE OF OIL AND GAS

DATE August 25, 2016  
 OPERATOR'S WELL NO. P2N4  
 API WELL NO. \_\_\_\_\_

WELL TYPE: OIL GAS LIQUID INJECTION \_\_\_\_\_ WASTE DISPOSAL \_\_\_\_\_ STATE COUNTY 47 - 073 - 02556 PERMIT 1464

(IF "GAS") PRODUCTION X STORAGE \_\_\_\_\_ DEEP \_\_\_\_\_ SHALLOW X

LOCATION: ELEVATION 712.2' WATER SHED Middle Island Creek  
 DISTRICT Union COUNTY Pleasants  
 QUADRANGLE Bens Run 7 1/2'

SURFACE OWNER Morgan Valley Farms, Inc. ACREAGE 27.451 Ac.  
 OIL & GAS ROYALTY OWNER Morgan Valley Farms, Inc. LEASE ACREAGE 102.878 Ac.  
 LEASE NO. P7220

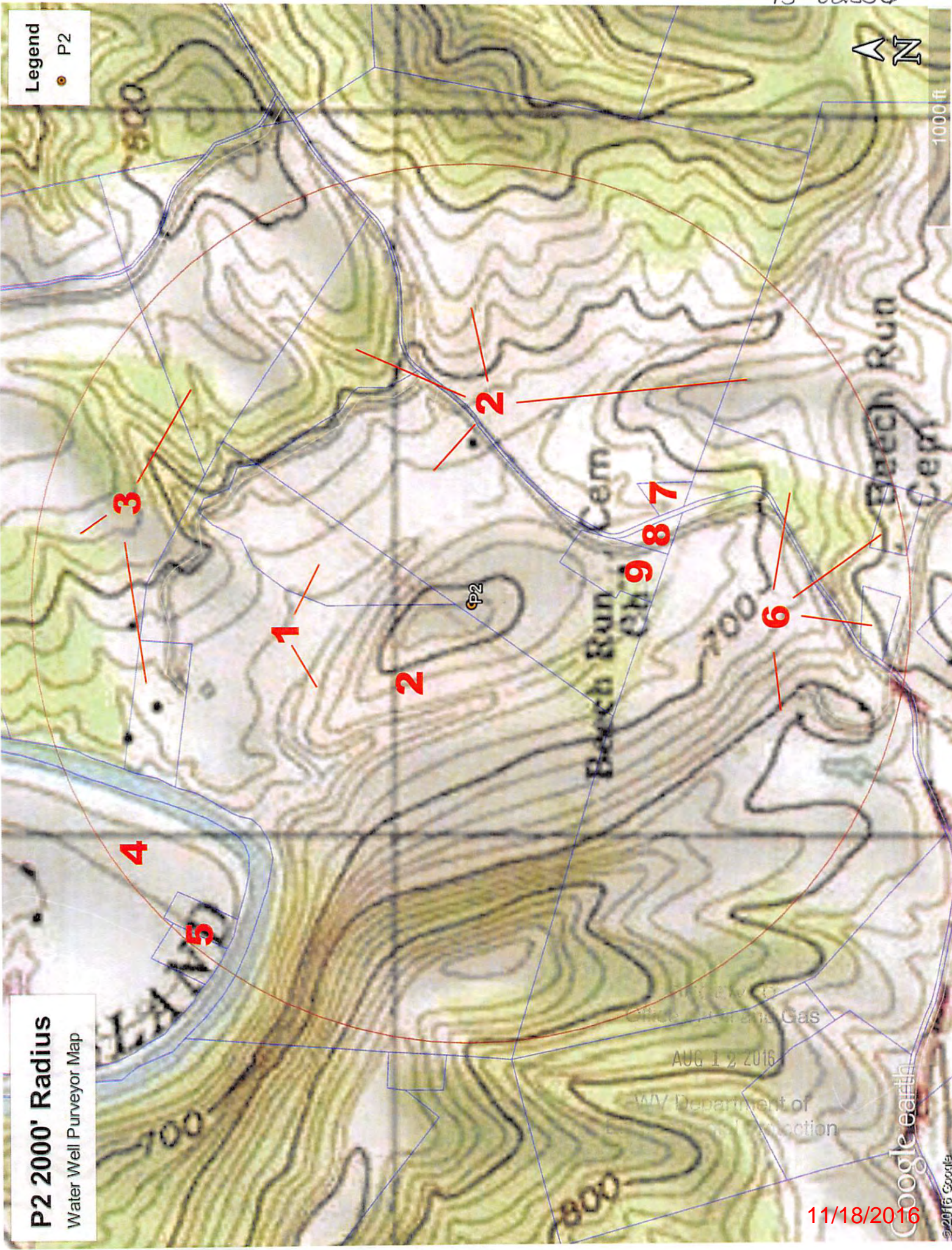
PROPOSED WORK: DRILL X CONVERT \_\_\_\_\_ DRILL DEEPER \_\_\_\_\_ REDRILL \_\_\_\_\_ FRACTURE OR STIMULATE X PLUG OFF OLD FORMATION \_\_\_\_\_ PERFORATE NEW FORMATION X OTHER PHYSICAL CHANGE IN WELL (SPECIFY) \_\_\_\_\_

PLUG AND ABANDON \_\_\_\_\_ CLEAN OUT AND REPLUG \_\_\_\_\_  
 TARGET FORMATION Marcellus ESTIMATED DEPTH TVD = 5,700'; TMD = 17,440'  
 WELL OPERATOR Jay-Bee Oil & Gas, Inc. DESIGNATED AGENT Randy Broda  
 ADDRESS 1720 Route 22 E, Union, NJ 07083 ADDRESS 3570 Shields Hill Rd., Cairo, WV 26337

Legend  
● P2



1000 ft



**P2 2000' Radius**  
Water Well Purveyor Map

WV DEPT OF  
Office of Oil and Gas  
AUG 12 2016  
WV Department of  
Environmental Protection

11/18/2016

Google earth  
©2016 Google