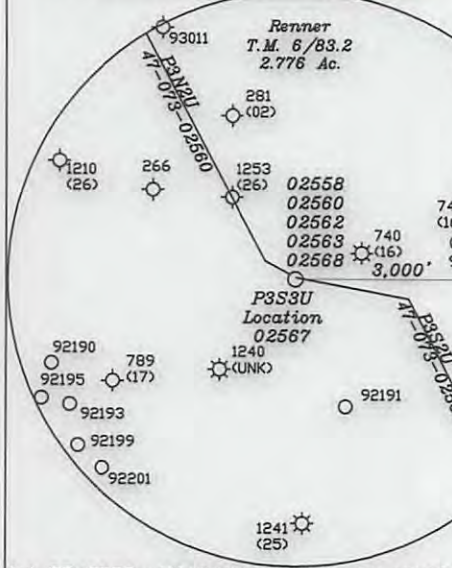


NUMBER	DIRECTION	DISTANCE
L1	S71°21'E	341'
L2	N72°05'W	424'
L3	S39°05'E	657'

Unit Boundary Line  
410' from Bore Path, TH & BH  
500' from Bore Path  
Final Lease Line

Note: All deep wells within 3000' of the well bore are shown on this plat.

- A-Perkins T.M. 6/102.3 6.378 Ac.
- B-Perkins T.M. 6/102.4 6.880 Ac.
- C-Perkins T.M. 6/102 4.896 Ac.
- D-Perkins T.M. 6/102.5 4.455 Ac.
- E-Kibble T.M. 6/102.7 4.245 Ac.
- F-Stevenson T.M. 6/102.10 4.111 Ac.
- G-Stevenson T.M. 6/102.2 2.466 Ac.
- H-Ruth Metz(Life) T.M. 12/2.2 35.8 Ac. P7222
- I-Patrick Joseph Wells T.M. 12/3 10.03 Ac. P7212A&B
- J-Regular Baptist Church of Jesus Christ T.M. 6/108 2 Ac. P7190B
- AA-Perkin T.M. 6/102.1 5.594 Ac.
- BB-Bennett et al T.M. 12/24 7 Ac. P7064
- CC- Courtney, T.M. 12/1.1 2.75 Ac. P7211C
- DD- Smith, T.M. 12/9 106.34 Ac. P7215
- EE- Wells Cattle Farms, Inc. T.M. 7/28 34.46 Ac. P7210
- FF- Wells Cattle Farms, Inc. T.M. 7/28 93.03 Ac. P7210
- GG- Brewer, et al T.M. 6/63 7.74 Ac. P7507
- HH- Brewer, et al T.M. 6/62 32.26 Ac. P7506
- II- Summers, T.M. 6/86.1 56.99 Ac. P7209
- JJ- Renner, T.M. 6/83.2 2.776 Ac.
- KK- Renner, T.M. 6/82 16.28 Ac. P7189
- LL- Renner, T.M. 6/82.4 3.581 Ac.
- MM- Langford, T.M. 12/2.1 6.3 Ac. P7211B
- NN- Smith, T.M. 12/9.2 6.66 Ac. P7215A
- OO- Summers, T.M. 6/86 3.67 Ac. P7209A



- Notes:
- All wells within 500' of the horizontal leg are shown on this plat based upon information taken from DEP mapping, well plats, & aerial photos.
  - Ties to wells and corners are based on State Plane Grid North-NX North Zone NAD 83.
  - No water wells were found within 250' of the well location.
  - No dwellings or buildings were found within 625' from the center of the proposed pad. No perennial stream is located within 100' of LOD. No producing trout stream located within 300' of LOD.
  - Well bore path, Top Hole & Bottom hole locations are 410' from the unit boundary lines.

Top Hole	UTM NAD 83(Meters)-4365651.99 N, 494775.68 E
Landing Point	UTM NAD 83(Meters)-4365498.70 N, 494904.53 E
Bottom Hole	UTM NAD 83(Meters)-4362548.58 N, 496461.50 E

FILE NO. \_\_\_\_\_  
DRAWING NO. 1  
SCALE 1" = 2000'  
MINIMUM DEGREE OF ACCURACY 1 in 200  
PROVEN SOURCE OF ELEVATION GPS  
submeter unit

I THE UNDERSIGNED, HEREBY CERTIFY THAT THIS PLAT IS CORRECT TO THE BEST OF MY KNOWLEDGE AND BELIEF AND SHOWS ALL THE INFORMATION REQUIRED BY LAW AND THE RULES ISSUED AND PRESCRIBED BY THE DEPARTMENT OF ENVIRONMENTAL PROTECTION.

(SIGNED) David Jackson  
R.P.E. \_\_\_\_\_ P.S. 708



STATE OF WEST VIRGINIA  
Division of Environmental Protection  
OFFICE OF OIL AND GAS

DATE May 5, 2017  
OPERATOR'S WELL NO. P3S3U  
API WELL NO. \_\_\_\_\_

WELL TYPE: OIL X GAS X LIQUID INJECTION \_\_\_\_\_ WASTE DISPOSAL \_\_\_\_\_  
(IF "GAS") PRODUCTION X STORAGE \_\_\_\_\_ DEEP X SHALLOW \_\_\_\_\_  
LOCATION: ELEVATION 839.27' WATER SHED Middle Island Creek  
DISTRICT Union COUNTY Pleasants  
QUADRANGLE Bens Run 7 1/2'

SURFACE OWNER Jerry Lee Summers ACREAGE 56.99  
OIL & GAS ROYALTY OWNER Jerry Lee Summers LEASE ACREAGE 56.99  
LEASE NO. P7209

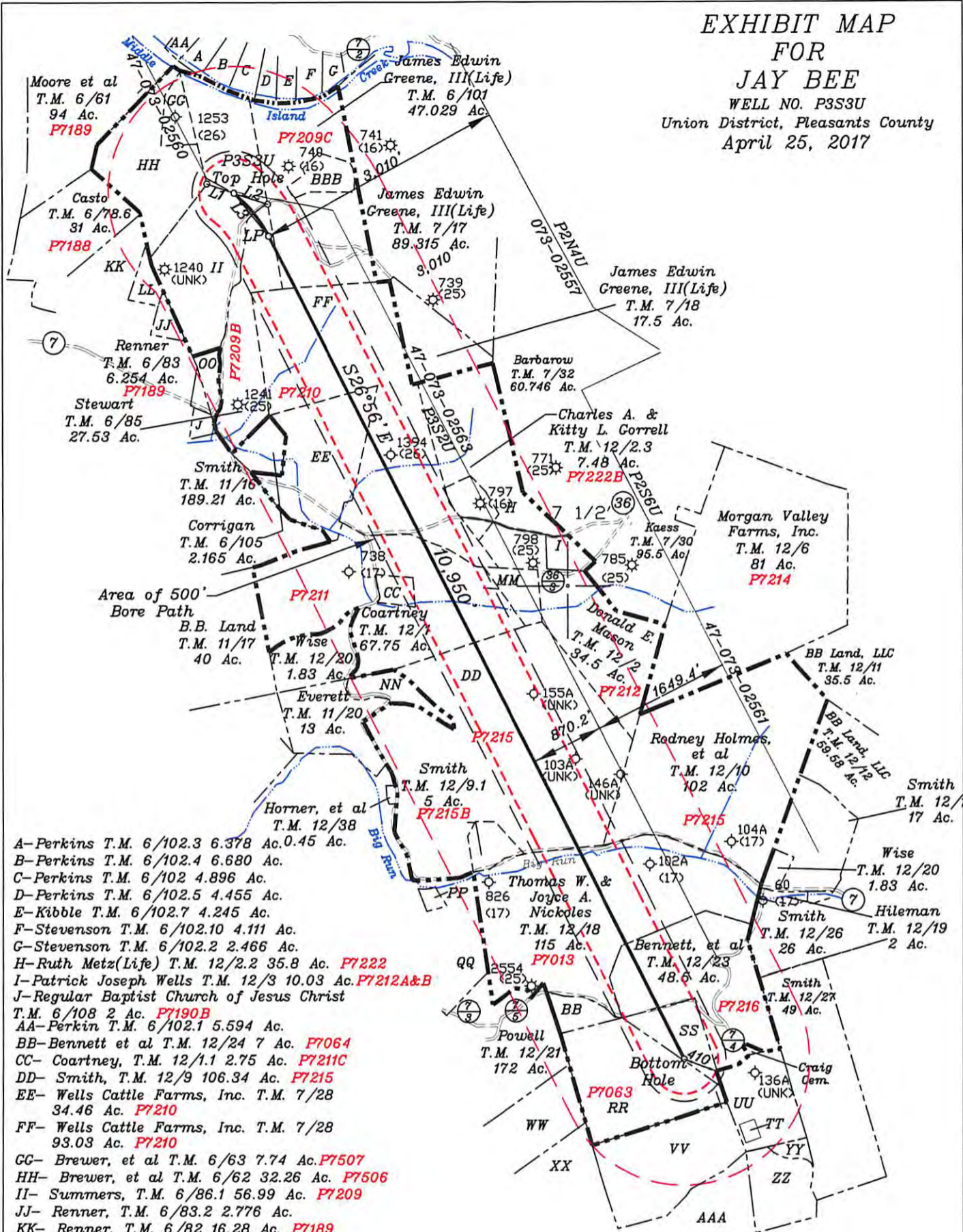
PROPOSED WORK: DRILL X CONVERT \_\_\_\_\_ DRILL DEEPER \_\_\_\_\_ REDRILL \_\_\_\_\_ FRACTURE OR STIMULATE X PLUG OFF OLD FORMATION \_\_\_\_\_ PERFORATE NEW FORMATION X OTHER PHYSICAL CHANGE IN WELL (SPECIFY) \_\_\_\_\_

PLUG AND ABANDON \_\_\_\_\_ CLEAN OUT AND REPLUG \_\_\_\_\_  
TARGET FORMATION Point Pleasant ESTIMATED DEPTH TVD = 10,717'; TMD = 22,822'  
WELL OPERATOR Jay-Bee Oil & Gas, Inc. DESIGNATED AGENT Randy Broda  
ADDRESS 1720 Route 22 E, Union, NJ 07083 ADDRESS 3570 Shields Hill Rd., Cairo, WV 26337

73-02567 H6A

# EXHIBIT MAP FOR JAY BEE

WELL NO. P3S3U  
Union District, Pleasants County  
April 25, 2017



- A-Perkins T.M. 6/102.3 6.378 Ac. 0.45 Ac.
- B-Perkins T.M. 6/102.4 6.680 Ac.
- C-Perkins T.M. 6/102 4.896 Ac.
- D-Perkins T.M. 6/102.5 4.455 Ac.
- E-Kibble T.M. 6/102.7 4.245 Ac.
- F-Stevenson T.M. 6/102.10 4.111 Ac.
- G-Stevenson T.M. 6/102.2 2.466 Ac.
- H-Ruth Metz(Life) T.M. 12/2.2 35.8 Ac. **P7222**
- I-Patrick Joseph Wells T.M. 12/3 10.03 Ac. **P7212A&B**
- J-Regular Baptist Church of Jesus Christ T.M. 6/108 2 Ac. **P7190B**
- AA-Perkin T.M. 6/102.1 5.594 Ac.
- BB-Bennett et al T.M. 12/24 7 Ac. **P7064**
- CC- Coartney, T.M. 12/1.1 2.75 Ac. **P7211C**
- DD- Smith, T.M. 12/9 106.34 Ac. **P7215**
- EE- Wells Cattle Farms, Inc. T.M. 7/28 34.46 Ac. **P7210**
- FF- Wells Cattle Farms, Inc. T.M. 7/28 93.03 Ac. **P7210**
- GG- Brewer, et al T.M. 6/63 7.74 Ac. **P7507**
- HH- Brewer, et al T.M. 6/62 32.26 Ac. **P7506**
- II- Summers, T.M. 6/86.1 56.99 Ac. **P7209**
- JJ- Renner, T.M. 6/83.2 2.776 Ac.
- KK- Renner, T.M. 6/82 16.28 Ac. **P7189**
- LL- Renner, T.M. 6/82.4 3.581 Ac.
- MM- Langford, T.M. 12 /2.1 6.3 Ac. **P7211B**
- NN- Smith, T.M. 12 /9.2 6.66 Ac. **P7215A**
- OO- Summers, T.M. 6 /86 3.67 Ac. **P7209A**
- PP- Farson T.M. 12 /41&42 4.187 Ac. **P7218A**
- QQ- Homer, et al T.M. 11/32 231.82 Ac.
- RR- Bennett, et al T.M. 12/22 40 Ac.
- SS- T.E.A. Management & Consulting, LLC T.M. 12/22.1 10 Ac. **P7065 & P7068**
- TT- Heartwood Forestland Fund IV Limited Partnership. T.M. 12/32.1 1 Ac. **Williams**

- UU- Heartwood Forestland Fund IV Limited Partnership. T.M. 12/32 19 Ac. **Heartwood**
- VV- Heartwood Forestland Fund IV Limited Partnership. T.M. 12/31 35 Ac. **Heartwood**
- WW- Powell, James & Jay T.M. 12/33.1 40 Ac. **Powell**
- XX- Anderson T.M. 16/2 75 Ac. **Anderson**
- YY- Anderson T.M. 12/36 1.25 Ac. **Anderson**
- ZZ- Anderson T.M. 16/4 11.25 Ac. **Anderson**
- AAA- Anderson T.M. 16/3 126 Ac. **Anderson**
- BBB- Greene, T.M. 7/101.1 6.156 Ac. **P7209D**

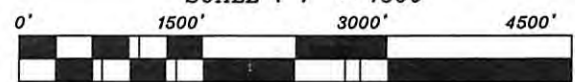
### LEGEND

- 1500' BOREPATH OFFSET
- INTERIOR TRACT LINE
- ADJOINER LINE
- ROAD LINE
- STREAM LINE
- UNIT BOUNDARY 410' FROM WELL BORE PATH, TH & BH
- LEASE LINE

Jackson Surveying Inc.  
677 W. Main Street  
Clarksburg, WV 26301  
(304) 623-5851



SCALE : 1" = 1500'



07/28/2017