

References:

A- Blake T.M. 11/12 6 Ac.
 B- Bowie T.M. 11/13 3.25 Ac.
 C- Bowie T.M. 11/14 12.855 Ac.
 D- Smith T.M. 6/106 21.46 Ac.
 E- Buzzard T.M. 6/84 10.5 Ac.
 F- Regular Baptist Church of Jesus Christ T.M. 6/108 2 Ac.
 G- Jay Bee Oil and Gas Inc. T.M. 11/27 165 Ac.
 I- Jerry Corrigan T.M. 6/105 2.165 Ac.
 J- Anthony L. Lauer & Devin L. Lauer T.M. 11/16.1 1.5 Ac.
 K- Anthony L. Lauer & Devin L. Lauer T.M. 11/16.2 3.29 Ac.
 L- BB Land LLC T.M. 11/18 26.75 Ac. P7049
 M- Jay Bee Oil and Gas, Inc. T.M. 11/30 25.14 Ac. P7058
 N- Jay Bee Oil and Gas, Inc. T.M. 11/31 13.11 Ac. P7057
 O- William C. Everett & Connie A. Everett T.M. 11/19 14.5 Ac.
 P- Jack Smith T.M. 12/9 1.5 Ac.
 Q- Joseph Carl Parson & Norma Jean Parson T.M. 12/41 1.329 Ac.
 R- Horner Cemetery T.M. 12/40 0.165 Ac.
 S- Bartrug T.M. 15/23 41 Ac.
 T- Mark W. Bartrug & Kimberly D. Bartrug T.M. 15/12 62.16 Ac.
 U- John R. Tice T.M. 15/28 1.69 Ac.
 V- Anderson T.M. 16/29 2.7 Ac.
 W- Farson T.M. 12/42 2.858 Ac.
 X- Heartwood Forestland Fund UV Limited Partnership T.M. 15/3 16.75 Ac.

NUMBER	DIRECTION	DISTANCE
L1	S46°12'W	1,266'
L2	S64°33'E	890'

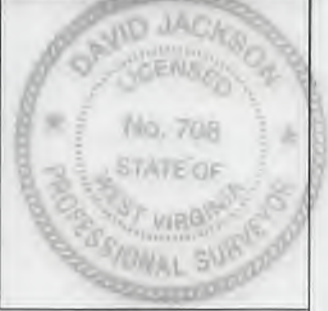
Top Hole	
Geo NAD 83-	39.426393 N, 81.069625 W
UTM NAD 83(Meters)-	4364086.84 N, 494007.42 E
UTM NAD 83(Feet)-	14317841.58 N, 1620756.00 E
Bottom Hole	
Geo NAD 83-	39.400436 N, 81.051996 W
UTM NAD 83(Meters)-	4351216.18 N, 495523.06 E
UTM NAD 83(Feet)-	14308423.42 N, 1625728.57 E

(+) DENOTES LOCATION OF WELL ON UNITED STATES TOPOGRAPHIC MAPS

FILE NO. _____
 DRAWING NO. 1
 SCALE 1" = 2000'
 MINIMUM DEGREE OF ACCURACY 1 in 200
 PROVEN SOURCE OF ELEVATION GPS
submeter unit

I THE UNDERSIGNED, HEREBY CERTIFY THAT THIS PLAT IS CORRECT TO THE BEST OF MY KNOWLEDGE AND BELIEF AND SHOWS ALL THE INFORMATION REQUIRED BY LAW AND THE RULES ISSUED AND PRESCRIBED BY THE DEPARTMENT OF ENVIRONMENTAL PROTECTION.

(SIGNED) David L Jackson
 R.P.E. _____ P.S. 708



STATE OF WEST VIRGINIA
 Division of Environmental Protection
 OFFICE OF OIL AND GAS

DATE August 28, 2017
 OPERATOR'S WELL NO. P4S4
 API WELL NO. 47-073-02572

WELL TYPE: OIL GAS LIQUID INJECTION X WASTE DISPOSAL _____
 (IF 'GAS') PRODUCTION X STORAGE _____ DEEP _____ SHALLOW X

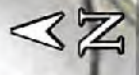
LOCATION: ELEVATION 957.22' WATER SHED Big Run of Outlet Middle Island Creek (HUC-10)
 DISTRICT Union COUNTY Pleasants
 QUADRANGLE Bens Run 7 1/2'

SURFACE OWNER John A. Smith & Edith U. Smith. ACREAGE 189.21 Ac.
 OIL & GAS ROYALTY OWNER John A. Smith & Edith U. Smith. LEASE ACREAGE 189.21 Ac.
 LEASE NO. P7019

PROPOSED WORK: DRILL X CONVERT _____ DRILL DEEPER _____ REDRILL _____ FRACTURE OR STIMULATE X PLUG OFF OLD FORMATION _____ PERFORATE NEW FORMATION X OTHER PHYSICAL CHANGE IN WELL (SPECIFY) _____

PLUG AND ABANDON _____ CLEAN OUT AND REPLUG _____
 TARGET FORMATION Marcellus ESTIMATED DEPTH TVD = 5,995'; TMD = 17,150'
 WELL OPERATOR Jay-Bee Oil & Gas, Inc. DESIGNATED AGENT Randy Broda
 ADDRESS 1720 Route 22 E, Union, NJ 07083 ADDRESS 3570 Shields Hill Rd., Cairo, WV 26337

73 0257a

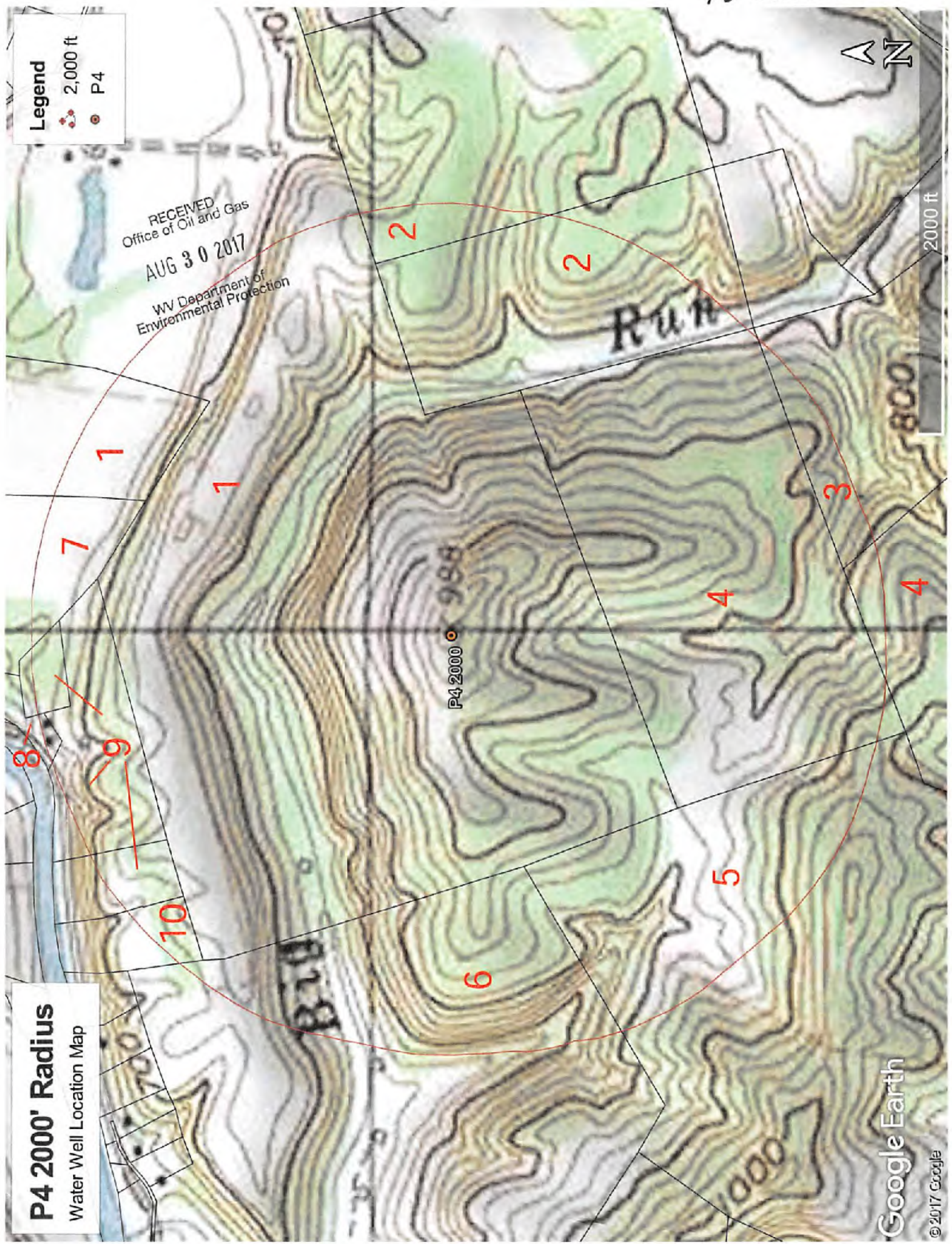


Legend

- 2,000 ft
- P4

RECEIVED
Office of Oil and Gas
AUG 30 2017
WV Department of
Environmental Protection

2000 ft



P4 2000' Radius
Water Well Location Map