

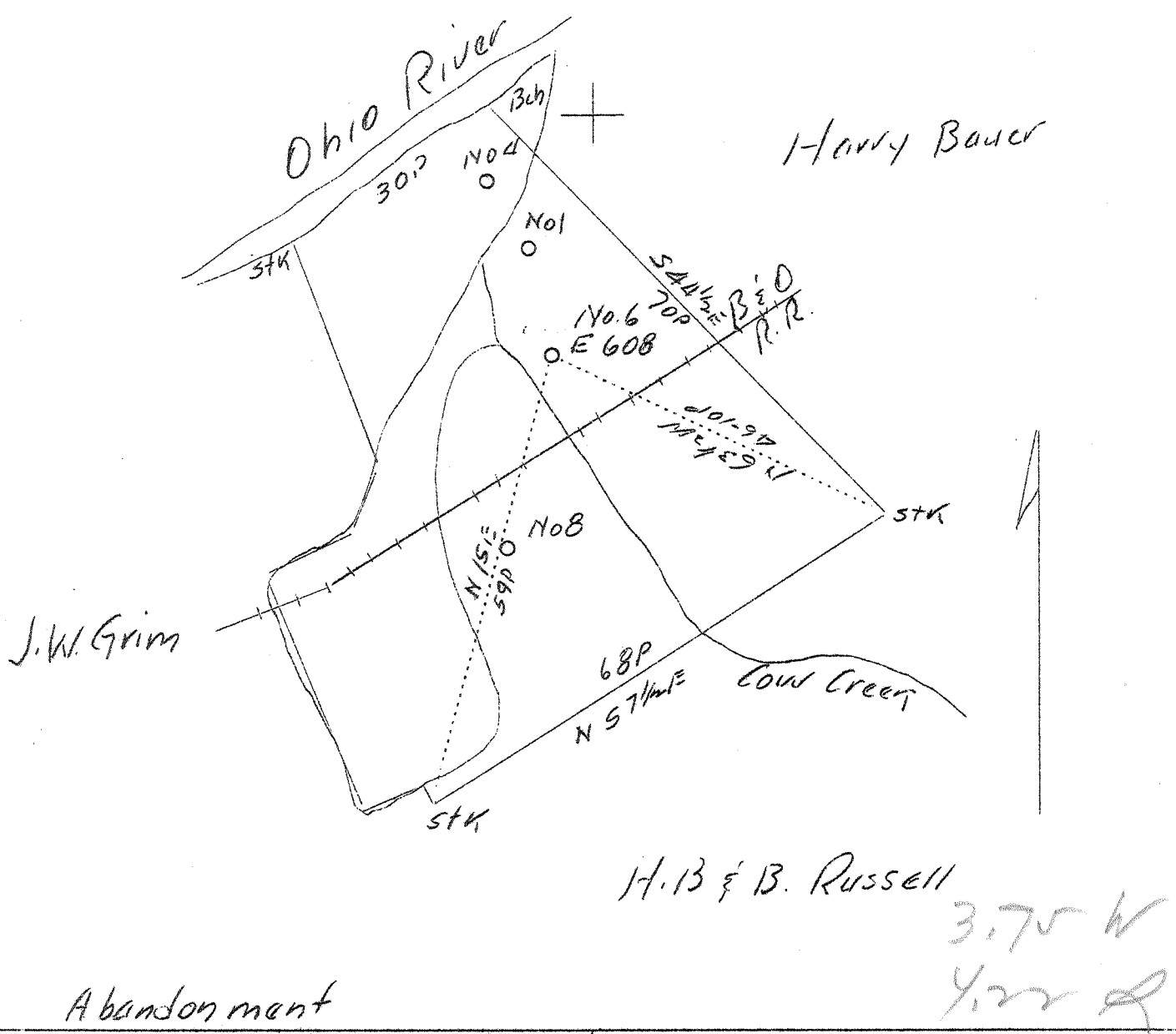
0 1 2 3 LATITUDE 39° 25'

-1

-2

-3

LONGITUDE 81° 15'



Company	H.B. Russell	STATE OF WEST VIRGINIA Department of Mines OIL AND GAS DIVISION CHARLESTON WELL LOCATION MAP File No. <u>PLEAS-97A</u> + Denotes location of well on United States Topographic Maps, scale 1 to 62,500, latitude and longitude lines being represented by border lines as shown. — Denotes one inch spaces on border line of original tracing.
Address	St. Marys, W. Va. R.D. #4	
Farm	H.B. & Bula Russell	
Tract	Acres 22 Lease No.	
Well (Farm) No.	6 Serial No.	
Elevation (Spirit Level)	608'	
Quadrangle	Marietta 50	
County	Pleasants District Grant	
Engineer	Jno. Triplett	
Engineer's Registration No.		
File No.	Drawing No.	
Date	Aug. 30, 1937 Scale 1"-20 Poles	