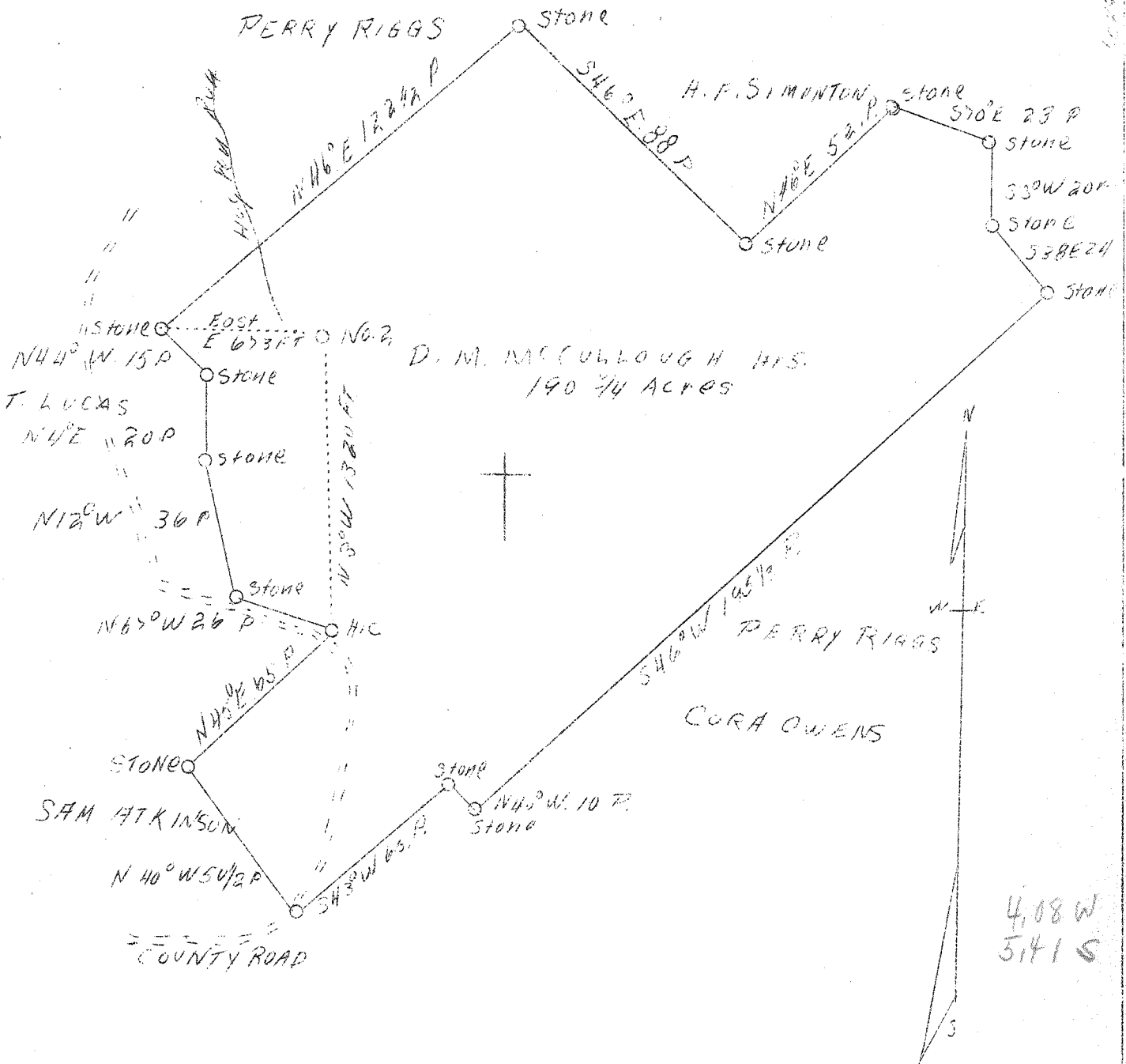


Latitude 39° 25'



ABD

Company	G. A. Smith
Address	St. Marys, W. Va.
Farm	D. M. McCullough Hrs.
Acres	190-3/4
Well (Farm) No.	Two
Elevation (Sp)	1074
Quadrangle	St. Marys (E.C.)
County	Pleasants
District	McKim
Engineer	J. V. Dunbar
Eng. Reg. No.	65
File No.	C. 23-L
Date	Sept 6, 1938
Scale	40 rods to 1"

STATE OF WEST VIRGINIA  
 Department of Mines  
 OIL & GAS DIVISION  
 Charleston

WELL LOCATION MAP  
 File No. Pleas-108-A

x Denotes location of well on U. S. Topographic Maps, scale 1 to 62,500, latitude and longitude lines being represented by border lines as shown.  
 - Denotes one inch spaces on border line of original tracing.