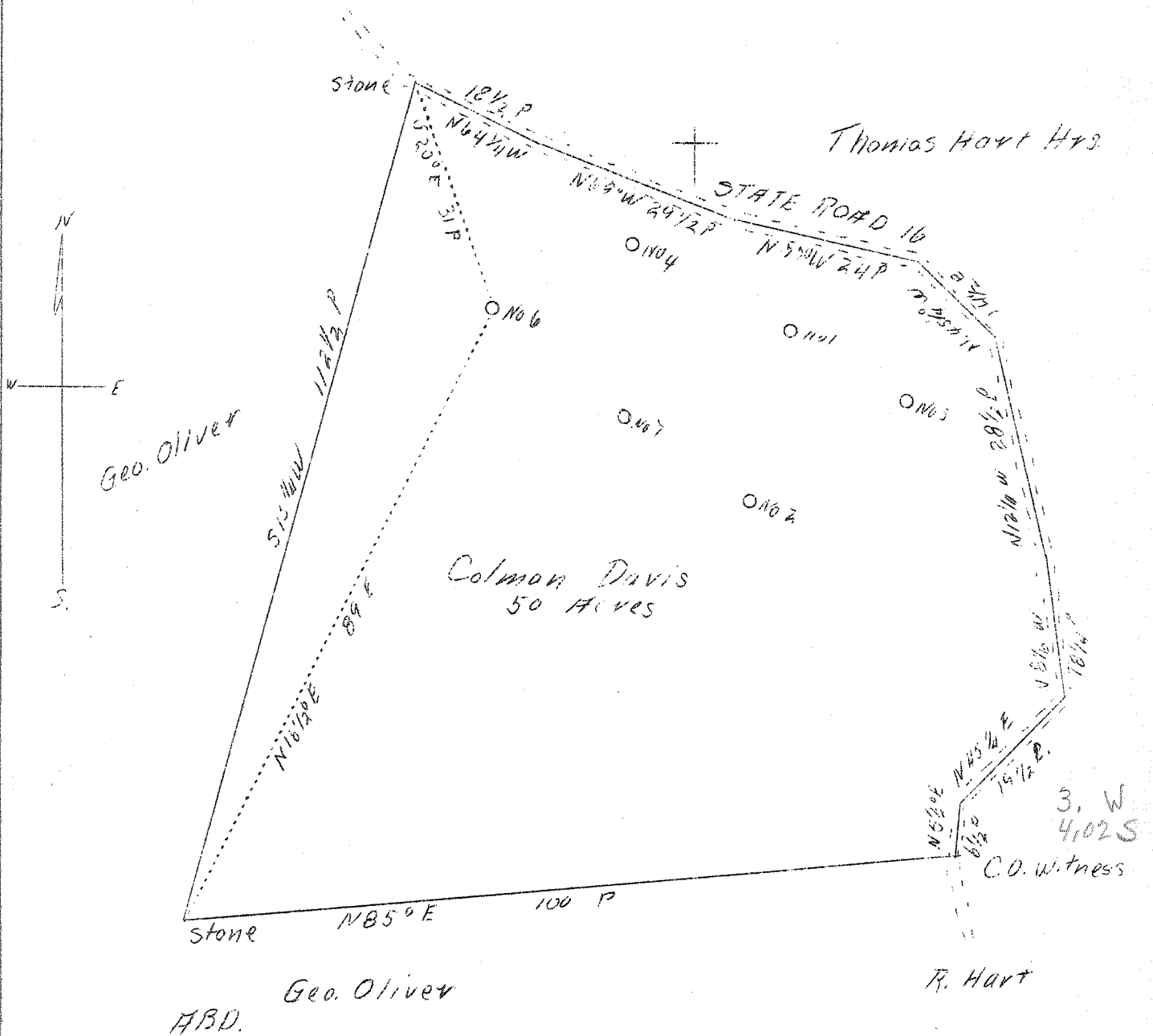


LATITUDE 39° 25'

LONGITUDE 81° 05'



Company	Bettie White Oil Co.
Address	St. Marys, W. Va.
Farm	Colman Davis
Acres	50
Well (Farm) No.	Six
Elevation (SP)	970'
Quadrangle	St. Marys, C
County	Pleasants
District	McKim
Engineer	Jno Triplett
Eng. Reg. No.	-
Date	Sept. 10, 1938
Scale	20 poles - 1"

STATE OF WEST VIRGINIA  
 Department of Mines  
 OIL & GAS DIVISION  
 Charleston

WELL LOCATION MAP  
 File No. Pleas-109-A

x Denotes location of well on U. S. Topographic Maps, scale 1 to 62,500, latitude and longitude lines being represented by border lines as shown.

- Denotes one inch spaces on border line of original tracing.