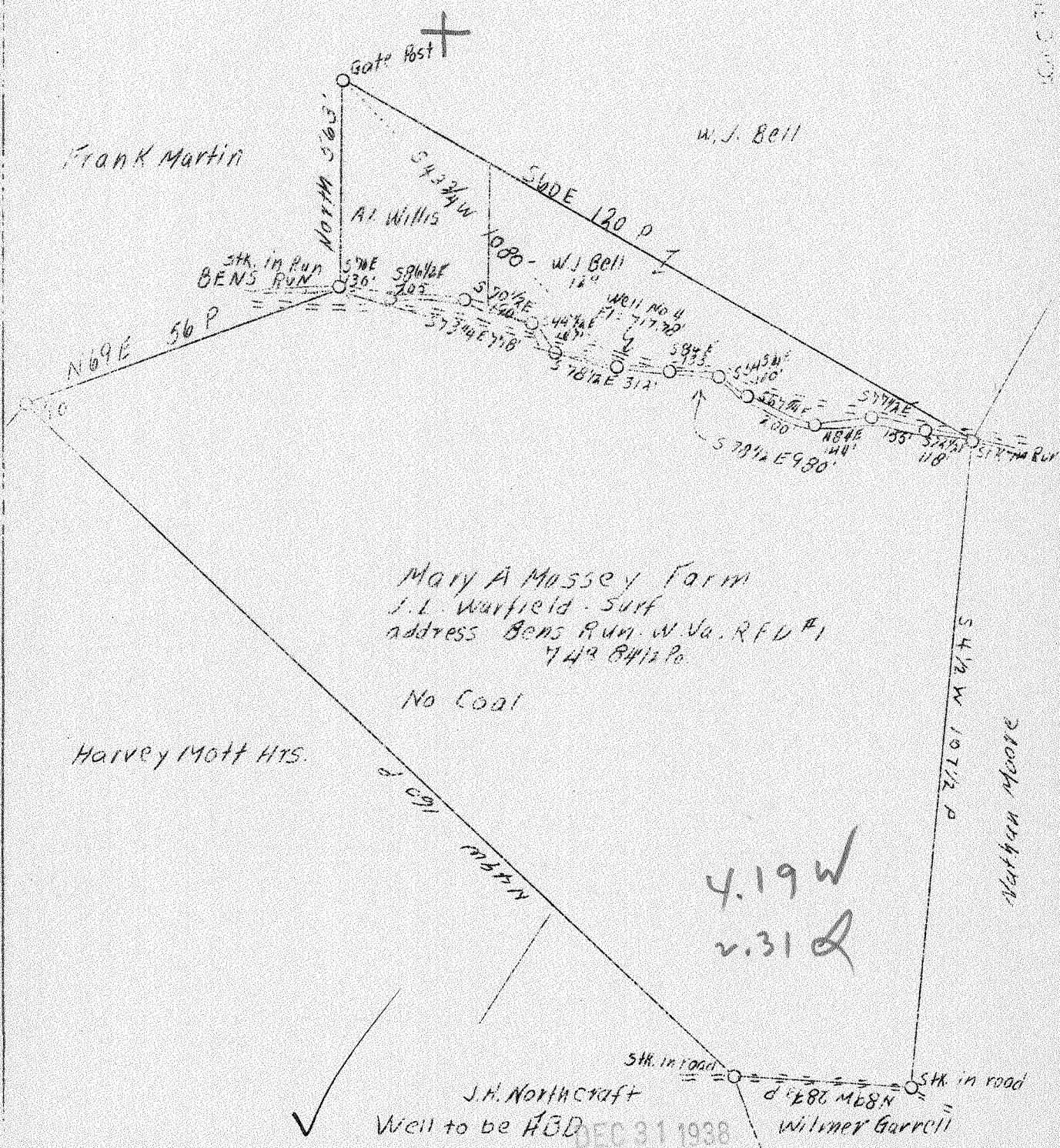


LATITUDE 39° 30'



Company	South Penn Oil Co.
Address	411-7th Ave., Pgh. Pa.
Farm	Mary A. Massey
Acres	74
Lease No.	52989
Well (Farm) No.	Four
Quadrangle	St. Marys
County	Pleasants
District	Union
Engineer	E. C. Tabler
Eng. Reg. No.	-
Date	Dec. 20, 1938
Scale	1" - 400'

STATE OF WEST VIRGINIA
 Department of Mines
 OIL & GAS DIVISION
 Charleston

WELL LOCATION MAP

File No. Pleas-116-A

x Denotes location of well on U. S. Topographic Maps, scale 1 to 62,500, latitude and longitude lines being represented by border lines as shown.

- Denotes one inch spaces on border line of original tracing.

WEST VIRGINIA DEPARTMENT OF MINES
OIL AND GAS DIVISION

68

WELL RECORD

Permit No. AP-116-A

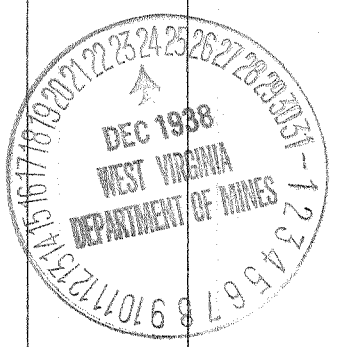
Oil or Gas Well OIL
(Kind)

Company South Penn Oil Company
 Address 411 Seventh Ave., Pittsburgh, Pa.
 Farm Mary A. Massey Acres 74
 Location (waters) ---
 Well No. 4 Elev. 717.78'
 District Union County Pleasants
 The surface of tract is owned in fee by J.L. Warfield
R.F.D. No. 1, Address Bens Run, W.Va.
 Mineral rights are owned by Ed. Massey
809 So. Akard St. Address Dallas, Texas
 Drilling commenced ---
 Drilling completed ---
 Date shot --- Depth of shot ---
 Open Flow /10ths Water in --- Inch
 /10ths Merc. in --- Inch
 Volume --- Cu. Ft.
 Rock Pressure --- lbs. --- hrs.
 Oil --- bbls., 1st 24 hrs.
 Fresh water --- feet --- feet
 Salt water --- feet --- feet

Casing and Tubing	Used in Drilling	Left in Well	Packers
Size			Kind of Packer
16			
13			
10			Size of
8 1/4	120'		
6 5/8	4-7/8" 628'		Depth set
5 3/16			
3			Perf. top
2			Perf. bottom
Liners Used			Perf. top
			Perf. bottom

CASING CEMENTED --- SIZE --- No. FT. --- Date ---
 COAL WAS ENCOUNTERED AT --- FEET --- INCHES
--- FEET --- INCHES --- FEET --- INCHES
--- FEET --- INCHES --- FEET --- INCHES

Formation	Color	Hard or Soft	Top	Bottom	Oil Gas or Water	Depth Found	Remarks
Cow Run Sand (Est.)			640	658	Oil	(No Record)	
Total Depth				660			
<u>(NO RECORD AVAILABLE)</u>							



JAN 16 1939

