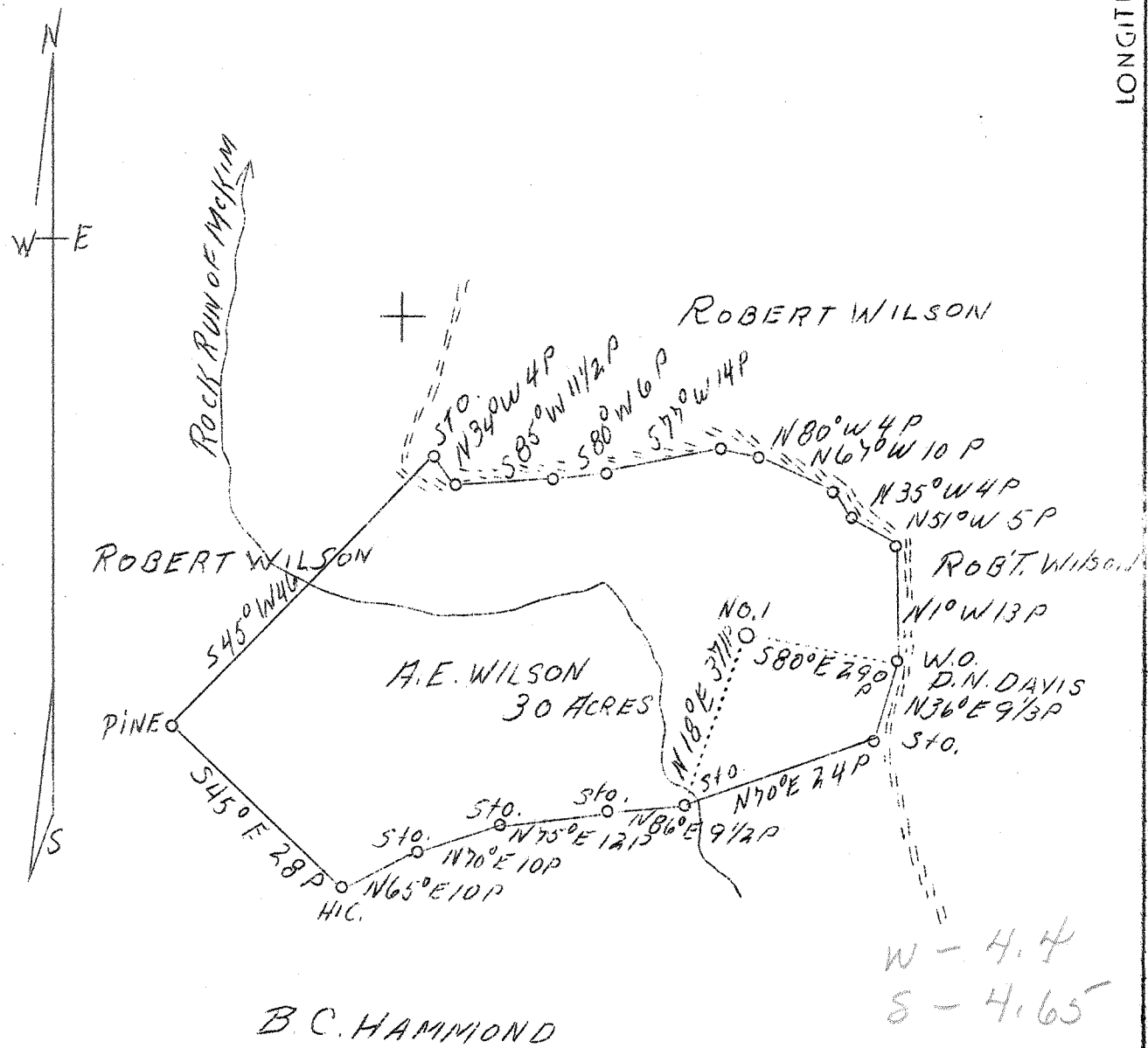


LATITUDE 39° 25'

LONGITUDE 81° 00'



H.B.D. SURVEYED & PLATTED BY ROBT. CHALFANT, PIKE, W.VA

Company Buffalo Oil Company
 Address G. A. Smith
 St. Marys, W. Va.
 Farm E. A. Wilson
 Acres 30
 Well (Farm) No. 1
 Elevation (SL) 714
 Quadrangle St. Marys E
 County Pleasants
 District McKim
 Engineer J. V. Dunbar
 Eng. Reg. No. 65
 File No. C-23-L
 Date June 23, 1939
 Scale 20 rods to 1"

STATE OF WEST VIRGINIA
 Department of Mines
 OIL & GAS DIVISION
 Charleston

WELL LOCATION MAP

File No. Pleas-137-A

x Denotes location of well on U. S. Topographic Maps, scale 1 to 62,500, latitude and longitude lines being represented by border lines as shown.

- Denotes one inch spaces on border line of original tracing.