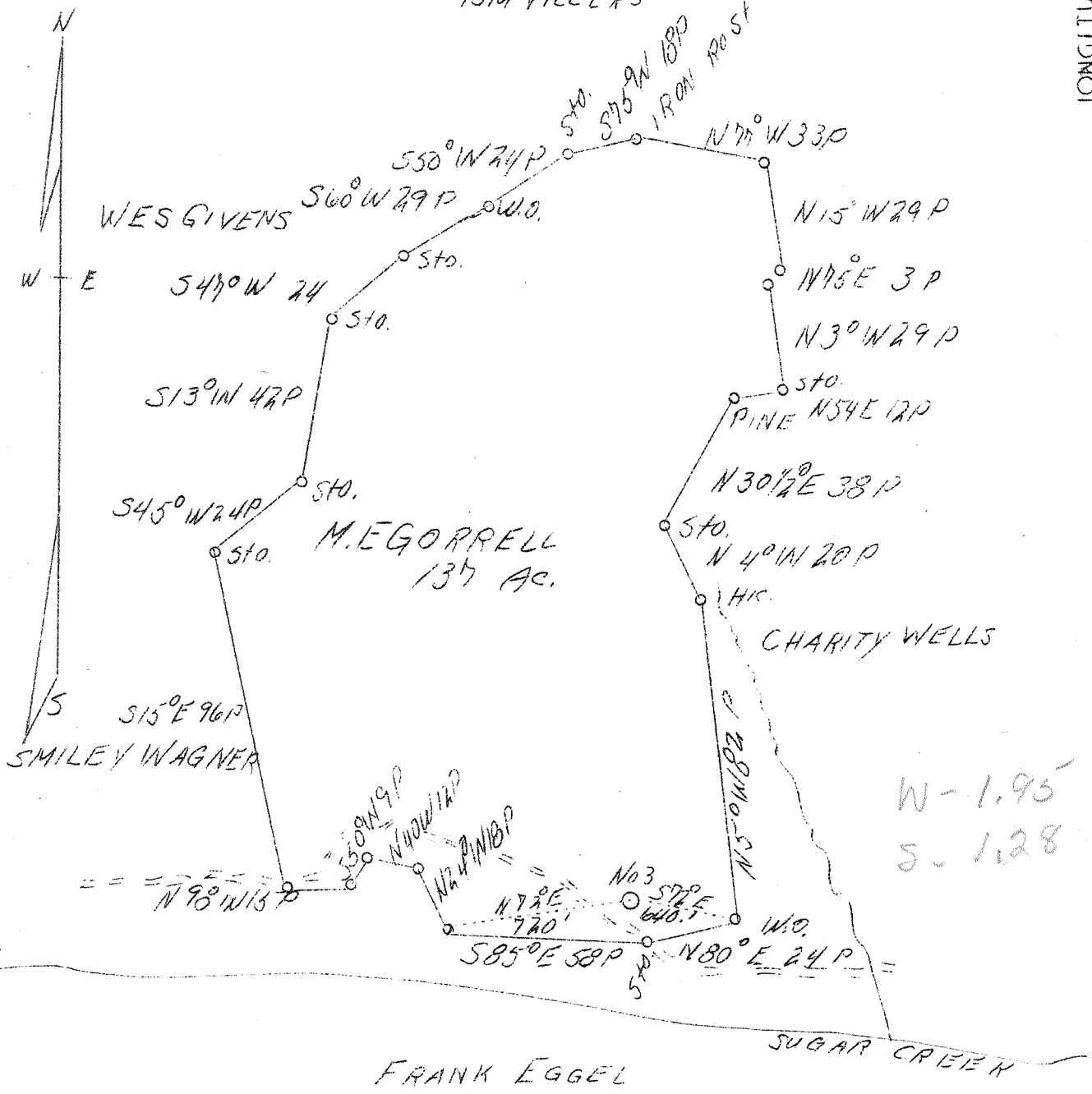


LATITUDE 39° 25'

LONGITUDE 81° 00'



TOM VILLERS



W-1.95  
S-1.28

Company           Gasto Oil Company  
 Address           Charleston, W. Va.  
 Farm               M. E. Gorrell  
 Acres               137  
 Well (Farm) No.   3  
 Elevation (SL)   751  
 Quadrangle       St. Marys E  
 County            Pleasants  
 District           Union  
 Engineer          J. V. Dunbar  
 Eng. Reg. No.     65  
 File No.          C-23-L  
 Date               April 21, 1938  
 Scale              40 rods to 1 inch

STATE OF WEST VIRGINIA  
 Department of Mines  
 OIL & GAS DIVISION  
 Charleston

WELL LOCATION MAP  
 File No. P1205-142-A

x Denotes location of well on U. S. Topographic Maps, scale 1 to 62,500, latitude and longitude lines being represented by border lines as shown.

- Denotes one inch spaces on border line of original tracing.