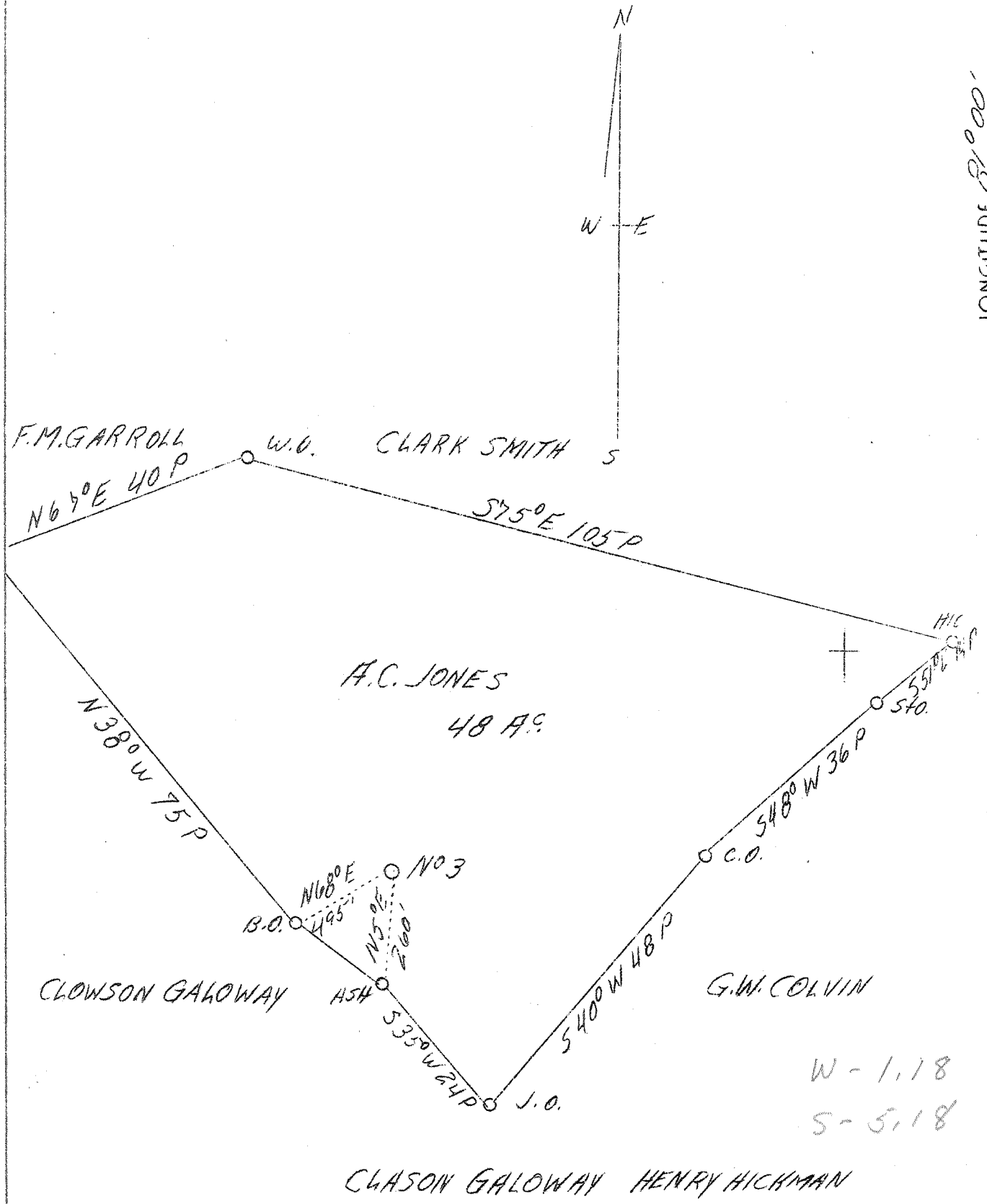


LATITUDE 39° 30'

LONGITUDE 81° 00'



HBD.

Company	Caste Oil Co.
Address	Charleston, W.Va.
Farm	A.C. Jones
Tract	3
Acres	48
Well (Farm) No.	3
El. (S.L.)	868
Quadrangle	St. Marys N E
County	Pleasants
District	Union
Eng.	J.V. Dunbar
Eng. Reg. No.	65
File No.	C 23 L
Date	4/22/39
Scale	1" - 20 Rods

STATE OF WEST VIRGINIA  
 Department of Mines  
 OIL AND GAS DIVISION  
 Charleston

WELL LOCATION MAP

File No. Pleas-147-A

x Denotes location of well on U.S. Topographic Maps, scale 1 to 62,500, latitude and longitude lines being represented by border lines as shown.

- Denotes one inch spaces on border line of original tracing.