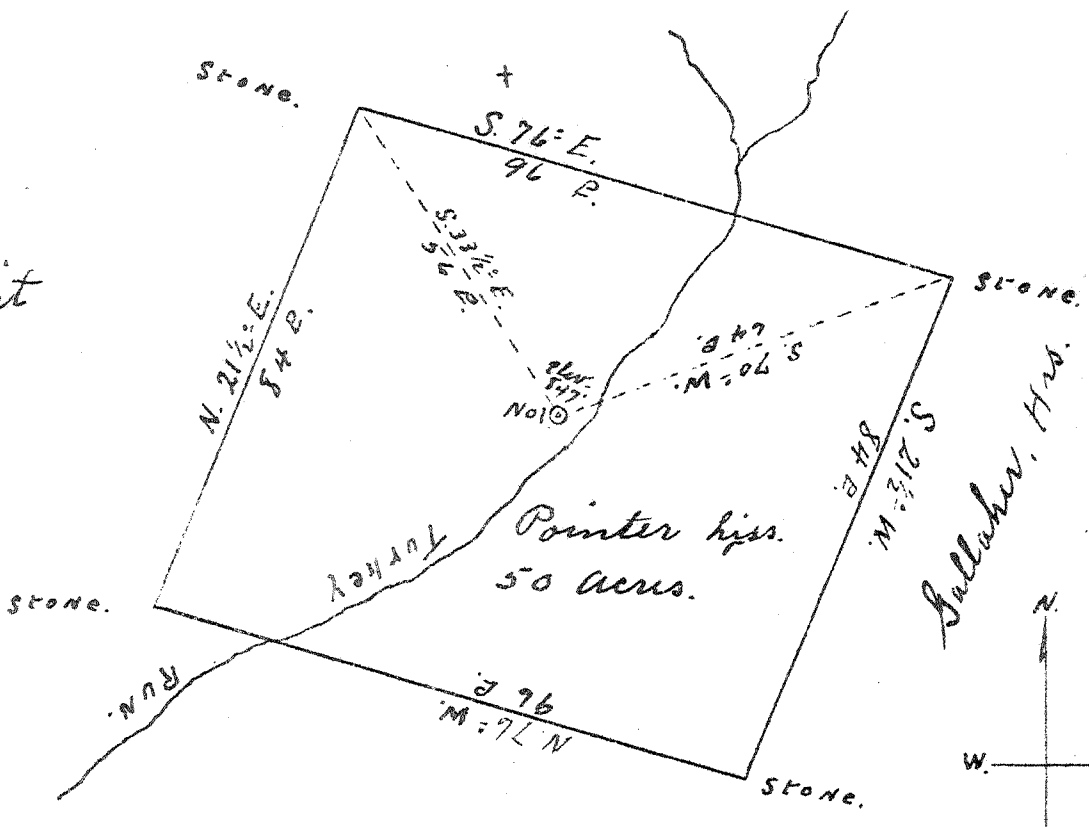


Latitude 39° 25'

Longitude 81° 05'

Betty Wait

Robinson



New Location   
 Drill Deeper   
 Abandonment

Company Ward & Deen Oil & Gas Co.  
 Address Parfessburg W. Va.  
 Farm A. S. Pointer Hrs.  
 Tract \_\_\_\_\_ Acres 50 Lease No. \_\_\_\_\_  
 Well (Farm) No. 1 Serial No. \_\_\_\_\_  
 Elevation (Spirit Level) 847'  
 Quadrangle St. Marys WVA.  
 County Pleasants District Mc Kim  
 Engineer Geo Triplett  
 Engineer's Registration No. \_\_\_\_\_  
 File No. \_\_\_\_\_ Drawing No. \_\_\_\_\_  
 Date May 19, 1941 Scale 30 P. = 1"

STATE OF WEST VIRGINIA  
 DEPARTMENT OF MINES  
 OIL AND GAS DIVISION  
 CHARLESTON

WELL LOCATION MAP  
 FILE NO. PLEAS-168A

+ Denotes location of well on United States Topographic Maps, scale 1 to 62,500, latitude and longitude lines being represented by border lines as shown.

- Denotes one inch spaces on border line of original tracing.