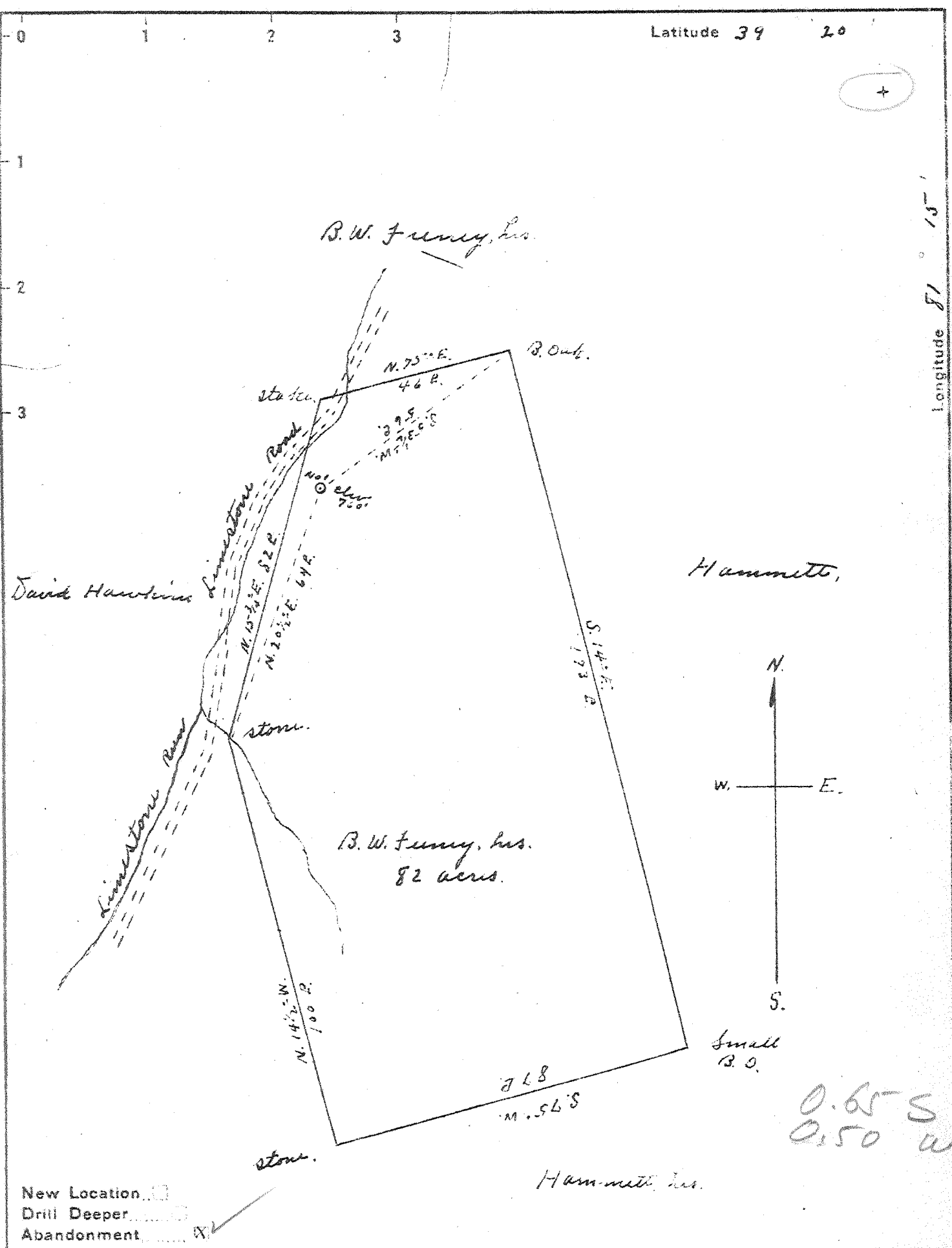


Longitude 81 15'



Company J. E. Hillman
 Address St. Marys W.Va.
 Farm B. W. Fenny, Inc.
 Tract _____ Acres 82 Lease No. _____
 Well (Farm) No. 1 Serial No. _____
 Elevation (Spirit Level) 760'
 Quadrangle Marietta, Ohio
 County Pleasants District Jefferson
 Engineer Joe Tripplitt
 Engineer's Registration No. _____
 File No. _____ Drawing No. _____
 Date Nov. 18, 1941 Scale 30 P. 1"

STATE OF WEST VIRGINIA
 DEPARTMENT OF MINES
 OIL AND GAS DIVISION
 CHARLESTON

WELL LOCATION MAP
 FILE NO. PLEAS-179A

+ Denotes location of well on United States Topographic Maps, scale 1 to 62,500, latitude and longitude lines being represented by border lines as shown.
 - Denotes one inch spaces on border line of original tracing.