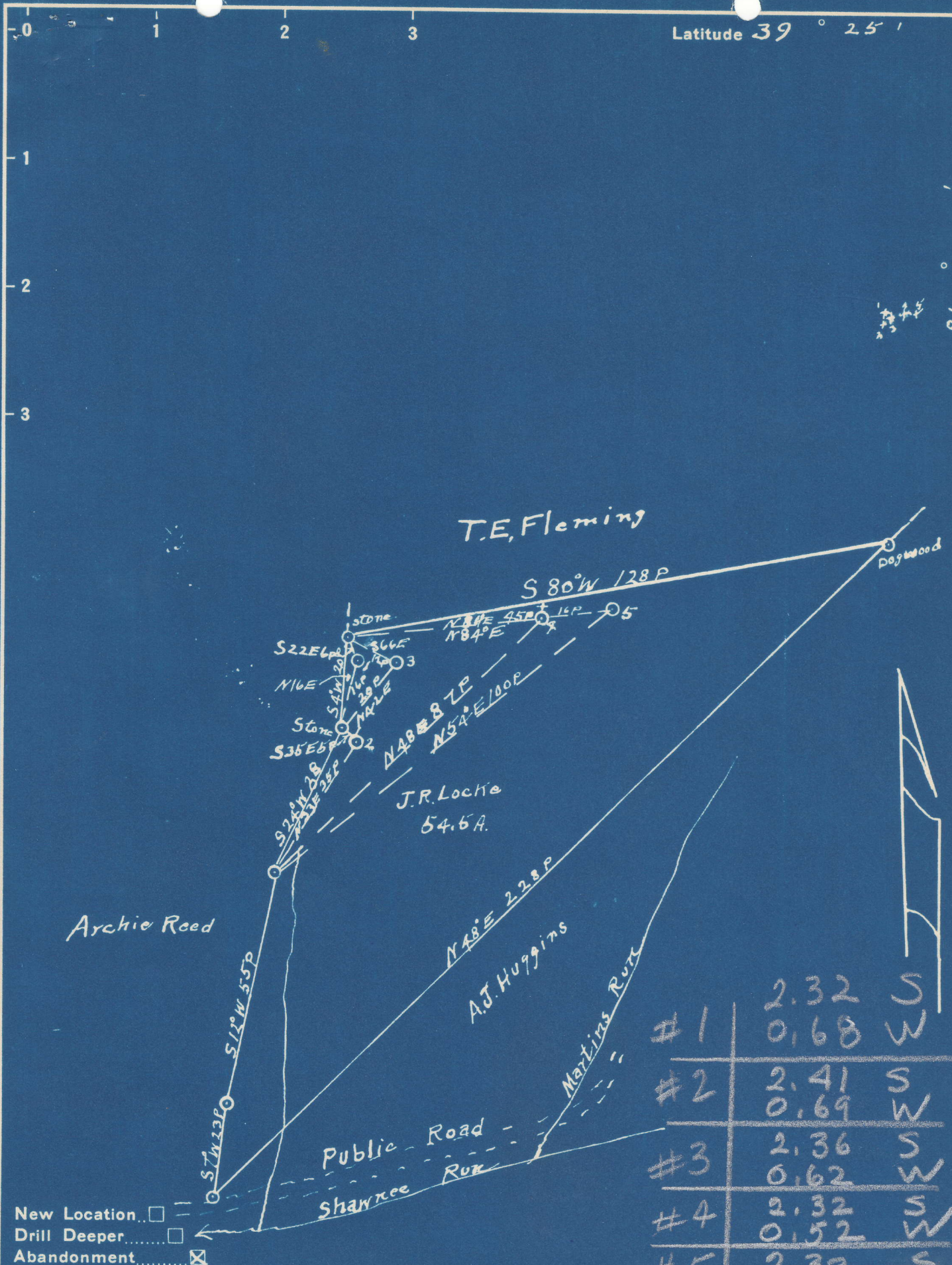


Latitude 39° 25'

Longitude 81° 05'



#1	2.32	S
	0.68	W
#2	2.41	S
	0.69	W
#3	2.36	S
	0.62	W
#4	2.32	S
	0.52	W
#5	2.33	S
	0.43	W

New Location...   
 Drill Deeper...   
 Abandonment...

Company Piersol, Smith & Cobb  
 Address RED No 2, Walker WVA  
 Farm J.R. Locke  
 Tract \_\_\_\_\_ Acres 54 1/2 A Lease No. \_\_\_\_\_  
 Well (Farm) No. 1, 3, 4, 5 Serial No. \_\_\_\_\_  
 Elevation (Spirit Level) 696 - 700 - 715 - 723 - 810  
 Quadrangle St Marys  
 County Pleasants District Lafayette  
 Engineer J.E. Anderson  
 Engineer's Registration No. Wood Co. Surveyor  
 File No. \_\_\_\_\_ Drawing No. \_\_\_\_\_  
 Date Jan. 6, 1942 Scale 1 in = 30 Poles

STATE OF WEST VIRGINIA  
 DEPARTMENT OF MINES  
 OIL AND GAS DIVISION  
 CHARLESTON

**WELL LOCATION MAP**

FILE NO. Pleas-184-Well #1  
Pleas-185-Well #2  
Pleas-186-Well #3 } A

+ Denotes location of well on United States Topographic Maps, scale 1 to 62,500, latitude and longitude lines being represented by border lines as shown.

- Denotes one inch spaces on border line of original tracing.