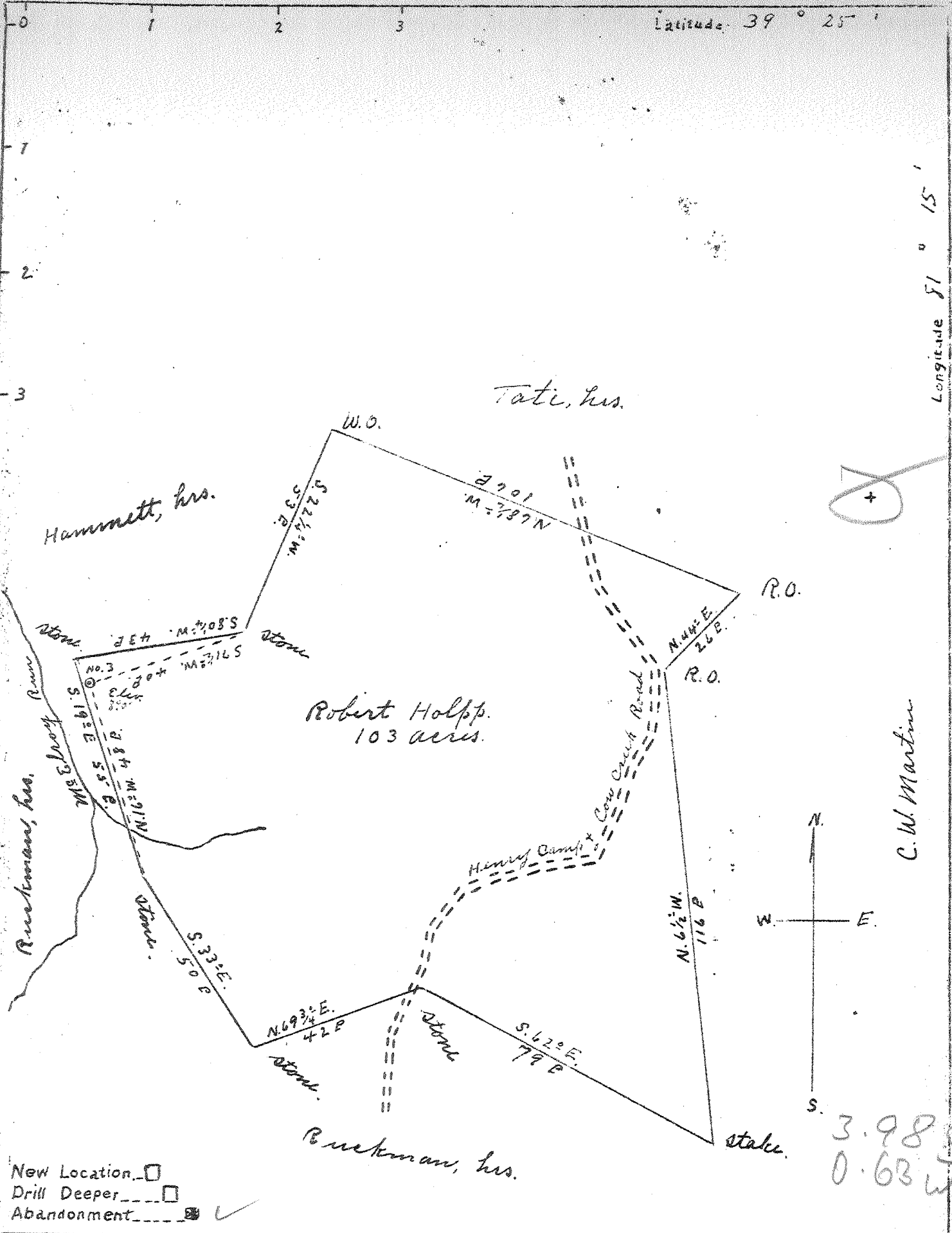


Latitude 39° 25'

Longitude 81° 15'



New Location
 Drill Deeper
 Abandonment

Company J. R. DeLong
 Address St. Marys W.Va Route 3
 Farm Robert Holpp
 Tract _____ Acres 103 Lease No. _____
 Well (Farm) No. 3 Serial No. _____
 Elevation (Spirit Level) 590'
 Quadrangle Marietta East
 County Plasants District Grant
 Engineer Jno Triplett
 Engineer's Registration No. _____
 File No. _____ Drawing No. _____
 Date June 13 1942 Scale 30 P = 1"

STATE OF WEST VIRGINIA
 DEPARTMENT OF MINES
 OIL AND GAS DIVISION.
 CHARLESTON.

WELL LOCATION MAP
 FILE NO Pleas 196 A

+ Denotes location of well on United States Topographic Maps Scale 1 to 62,500. latitude and longitude lines being represented by border lines as shown.
 - Denotes one inch spaces on border line of original tracing.

C. W. Martin