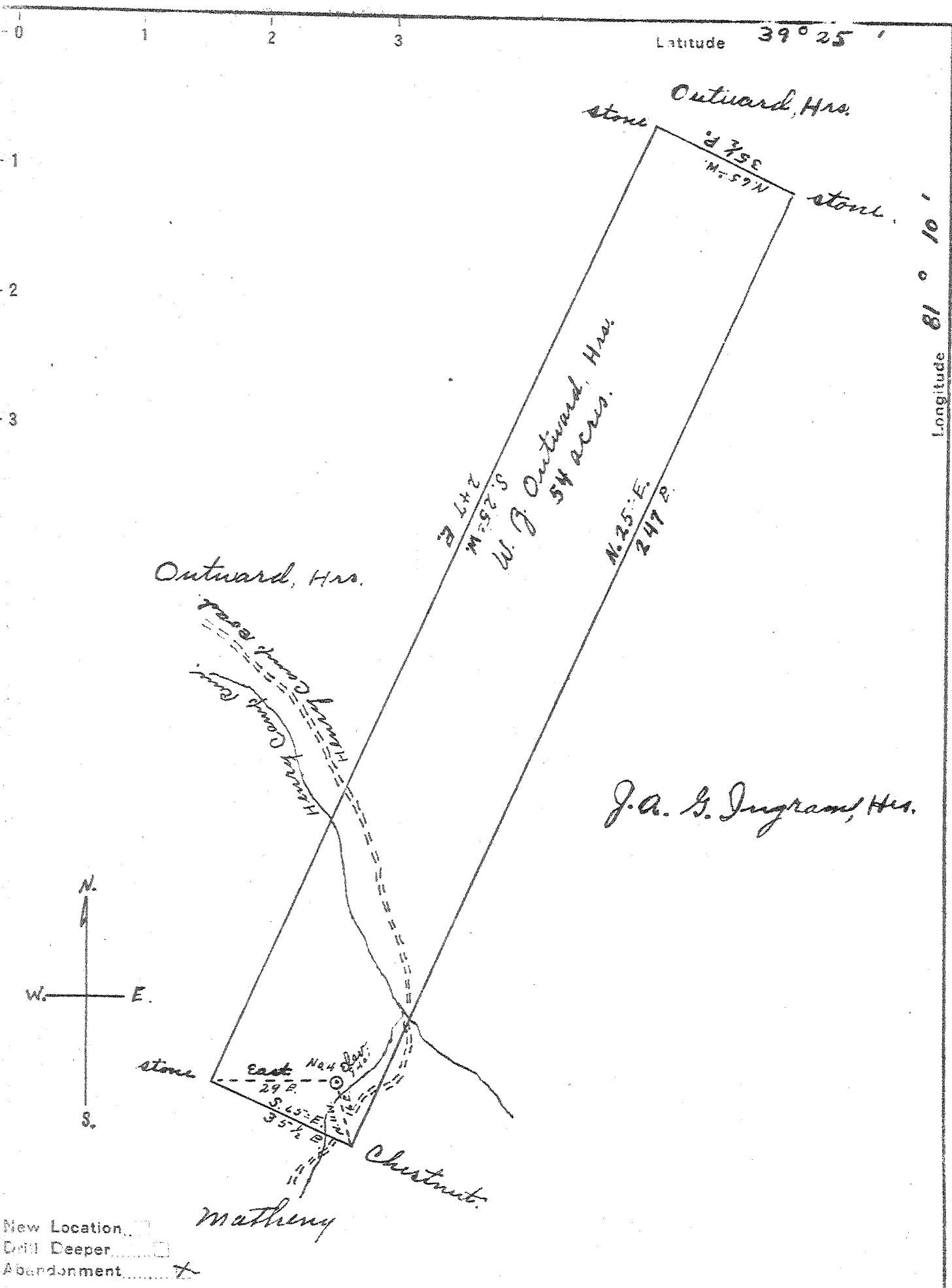


Latitude 39° 25'

Longitude 81° 10'



New Location
 Drill Deeper
 Abandonment

Company S. B. Glenn
 Address St. Marys W. Va.
 Farm W. J. Outward, Hrs.
 Tract _____ Acres 54 Lease No. _____
 Well (Farm) No. 4 Serial No. _____
 Elevation (Spirit Level) 840'
 Quadrangle St. Marys WC
 County Pleasants District Jefferson
 Engineer Jno Triplett
 Engineer's Registration No. _____
 File No. _____ Drawing No. _____
 Date May 7, 1947 Scale 1" = 30 F

STATE OF WEST VIRGINIA
 DEPARTMENT OF MINES
 OIL AND GAS DIVISION
 CHARLESTON

WELL LOCATION MAP
 FILE NO. Phos 212-A

+ Denotes location of well on United States Topographic Maps, scale 1 to 62,500, latitude and longitude lines being represented by border lines as shown.
 - Denotes one inch spaces on border line of original tracing.