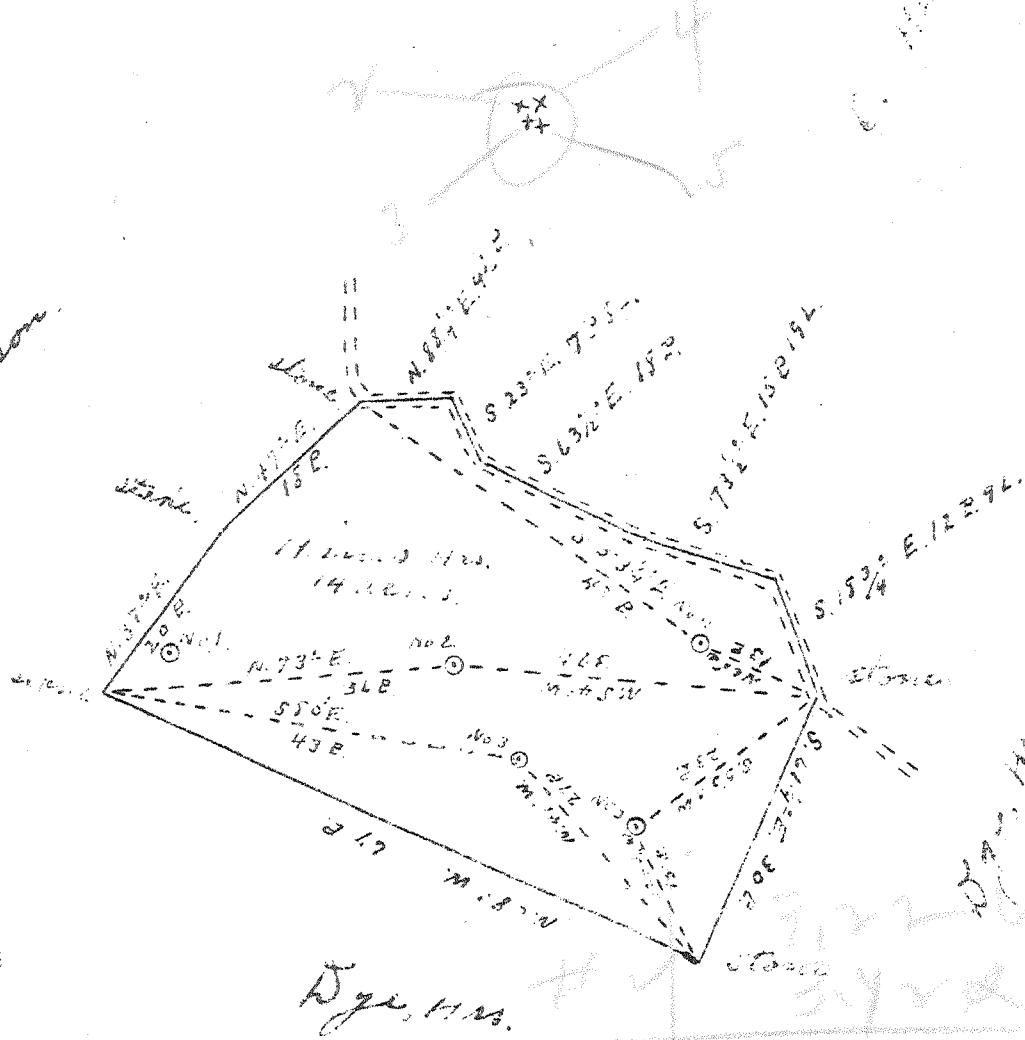


W.C. Patterson



New Location  
Drill Deeper  
Abandonment X

Company G. A. Clovis  
 Address St. Marys  
 Farm Hines Mrs.  
 Tract \_\_\_\_\_ Acres 14 Lease No. \_\_\_\_\_  
 Well Farm No. 2, 3, 4, 5 Serial No. \_\_\_\_\_  
 Elevation (Spirit Level) No. 2, 960', No. 3 820' range 30.  
 Quadrangle St. Marys  
 County Pleasants District Washington  
 Engineer Jno. Triplett  
 Engineer's Registration No. \_\_\_\_\_  
 File No. \_\_\_\_\_ Drawing No. \_\_\_\_\_  
 Date May 20 1948 Scale 1" = 20 P.

STATE OF WEST VIRGINIA  
DEPARTMENT OF MINES  
OIL AND GAS DIVISION  
CHARLESTON

WELL LOCATION MAP  
FILE NO. PLEAS-235-A-#2  
PLEAS-236-A-#3  
PLEAS-237-A-#4  
PLEAS-238-A-#5

+ Denotes location of well on United States  
Topographic Maps, scale 1 to 62,500, lat-  
itude and longitude lines being represented  
by border lines as shown.  
  
- Denotes one inch spaces on border line  
of original tracing.