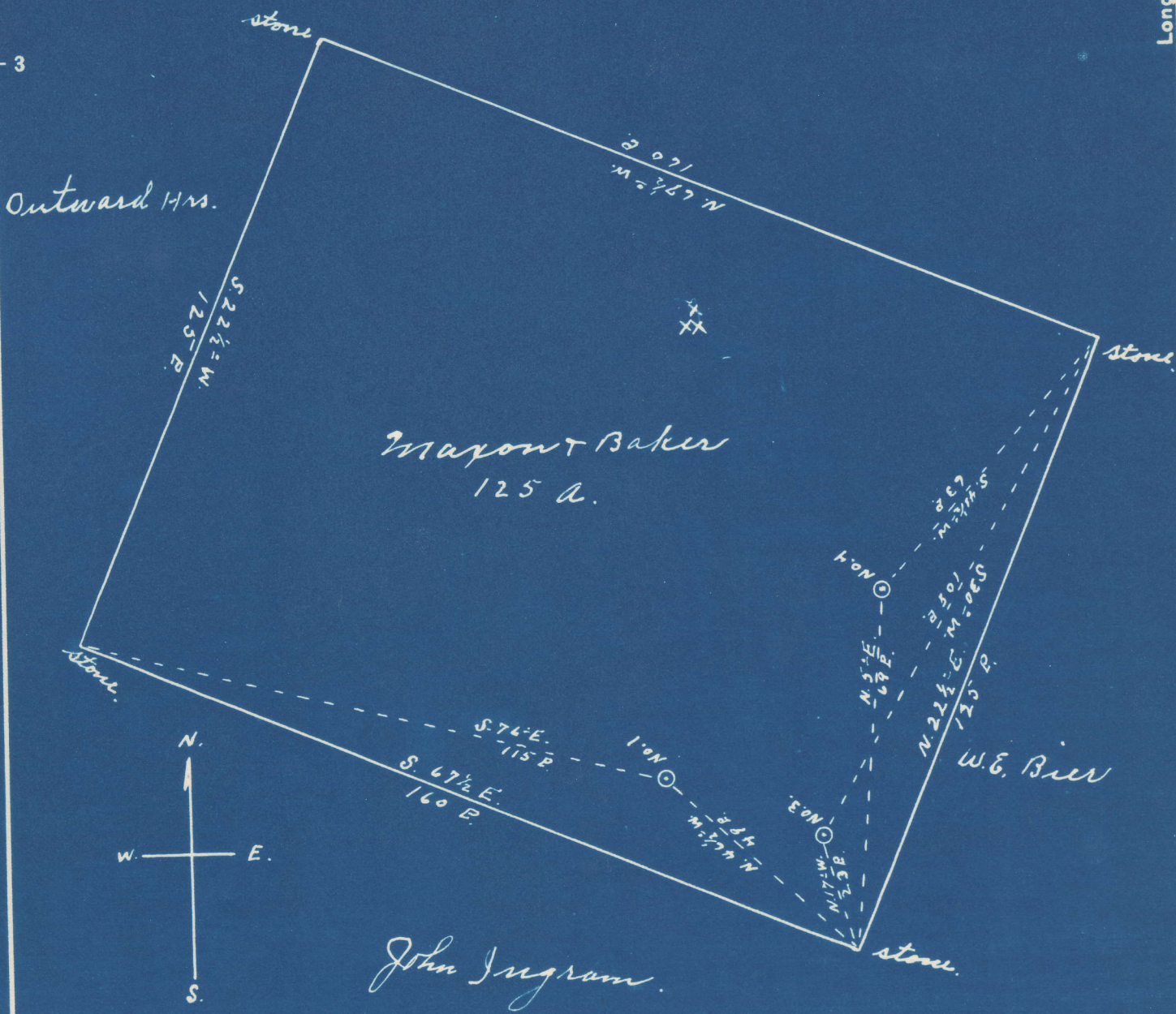


Latitude 39° 25'

#1	4.96 S	3.20 W
#3	4.97 S	3.11 W
#4	4.85 S	3.13 W

Mary Jarvis

Longitude 81° 10'



- New Location...
- Drill Deeper.....
- Abandonment.....

Company S. A. Clovis
 Address St. Marys W. Va.
 Farm Maxon & Baker
 Tract _____ Acres 125 Lease No. WC
 Well (Farm) No. 1, 3, & 4 Serial No. _____
 Elevation (Spirit Level) No. 1, 1000' No 3, 960' No 4, 900'
 Quadrangle St Marys
 County Pleasants District Jefferson
 Engineer John Triplett
 Engineer's Registration No. _____
 File No. _____ Drawing No. _____
 Date June 29, 1948 Scale 1" = 30 P.

STATE OF WEST VIRGINIA
 DEPARTMENT OF MINES
 OIL AND GAS DIVISION
 CHARLESTON

WELL LOCATION MAP
 PLEAS-241-A-#1
 FILE NO. ~~PLEAS-243-A-#3~~
 PLEAS-244-A-#4

+ Denotes location of well on United States Topographic Maps, scale 1 to 62,500, latitude and longitude lines being represented by border lines as shown.
 - Denotes one inch spaces on border line of original tracing.