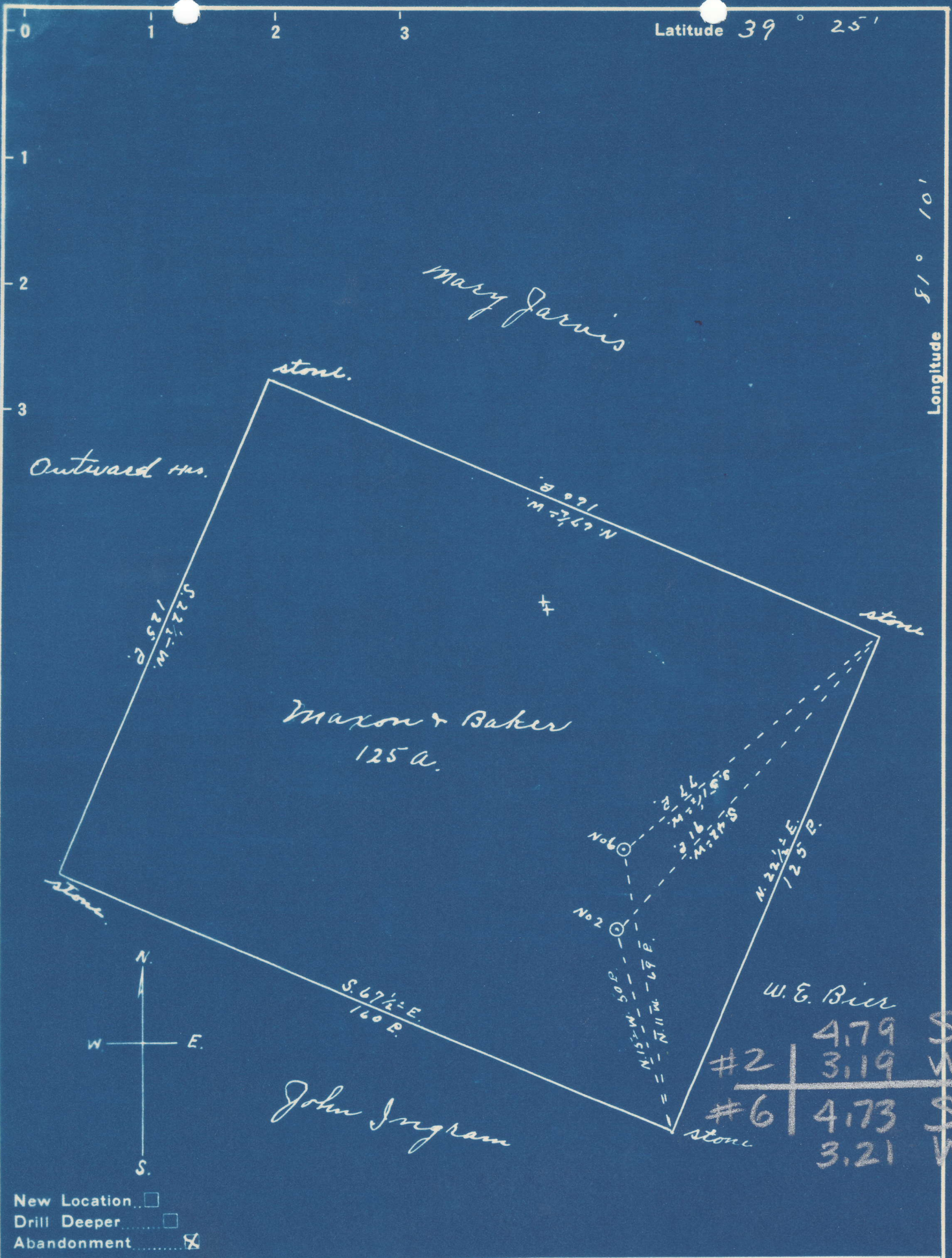


Latitude 39° 25'

Longitude 81° 10'



New Location
 Drill Deeper
 Abandonment

Company S. A. Clovis
 Address St. Marys W. Va.
 Farm Maxon & Baker
 Tract _____ Acres 125 Lease No. _____
 Well (Farm) No. 2 & 6 Serial No. _____
 Elevation (Spirit Level) No. 2, 570' No. 6, 575'
 Quadrangle St. Marys
 County Pleasants District Jefferson
 Engineer John Triplett
 Engineer's Registration No. _____
 File No. _____ Drawing No. _____
 Date June 28, 1945 Scale 1" = 30 P.

STATE OF WEST VIRGINIA
 DEPARTMENT OF MINES
 OIL AND GAS DIVISION
 CHARLESTON

WELL LOCATION MAP
 FILE NO. PLEAS-242-A-#2
PLEAS-245-A-#6

+ Denotes location of well on United States Topographic Maps, scale 1 to 62,500, latitude and longitude lines being represented by border lines as shown.
 - Denotes one inch spaces on border line of original tracing.