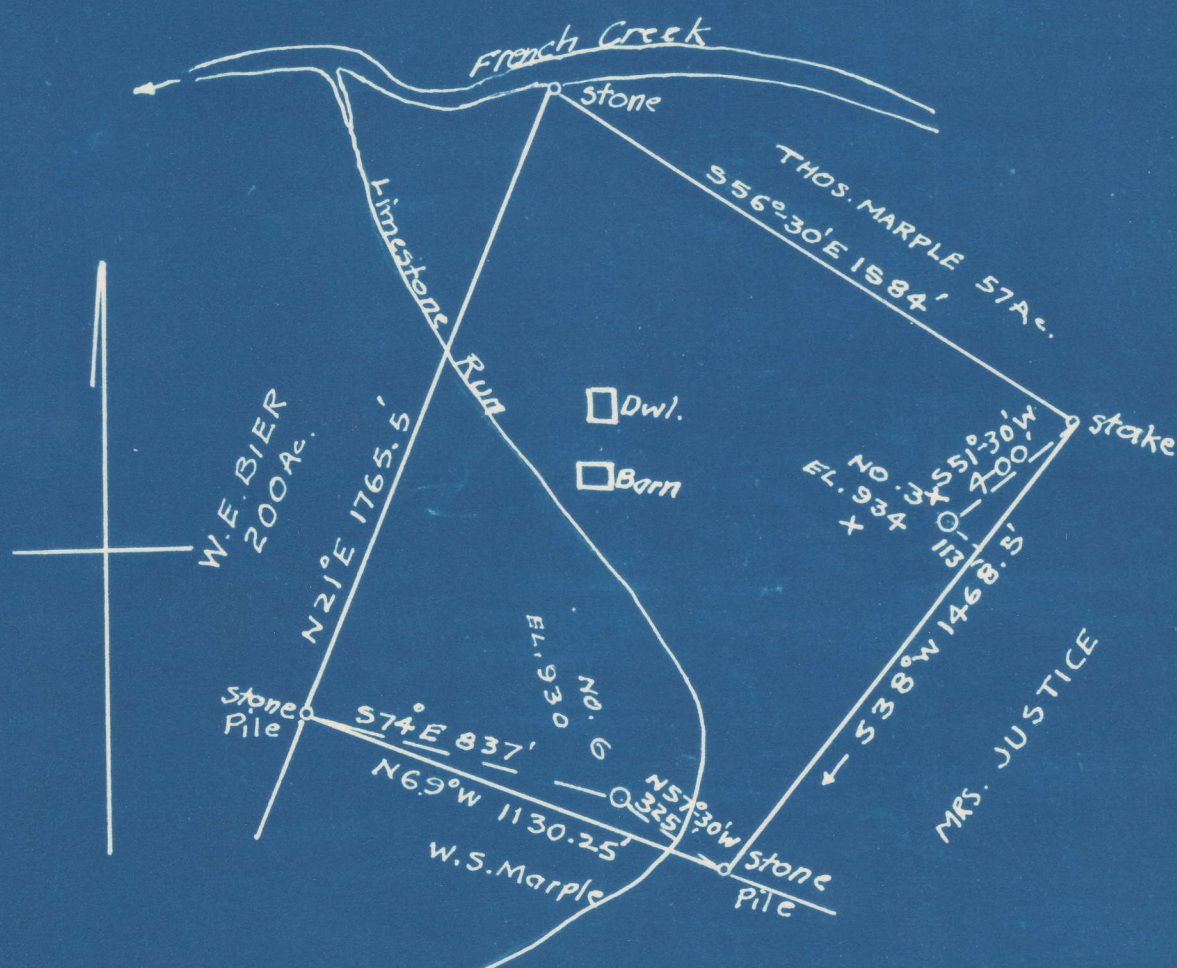


Latitude 39° 25'

Longitude 81°-10'



#6	4.92	S
	2.36	W
#3	4.78	S
	1.92	W

Abandonment

COMPANY: Dinsmoor & Co.
 ADDRESS: St. Marys, W. Va.
 FARM: W. S. Marple
 TRACT: ACRES: 50 LEASE NO.:
 WELL NO. 3, 6 SERIAL NO. WC
 ELEVATION: 934, & 930
 QUADRANGLE: St. Marys
 COUNTY: Pleasants DISTRICT: Jefferson
 ENGINEER: George R. Clarke
 ENGINEERS NO. 102
 FILE NO. DRAWING NO.
 DATE 4-7-49 SCALE: 1" = 500'

WELL ABANDONMENT MAP

PLEAS-325-A-#6
PLEAS-326-A #3