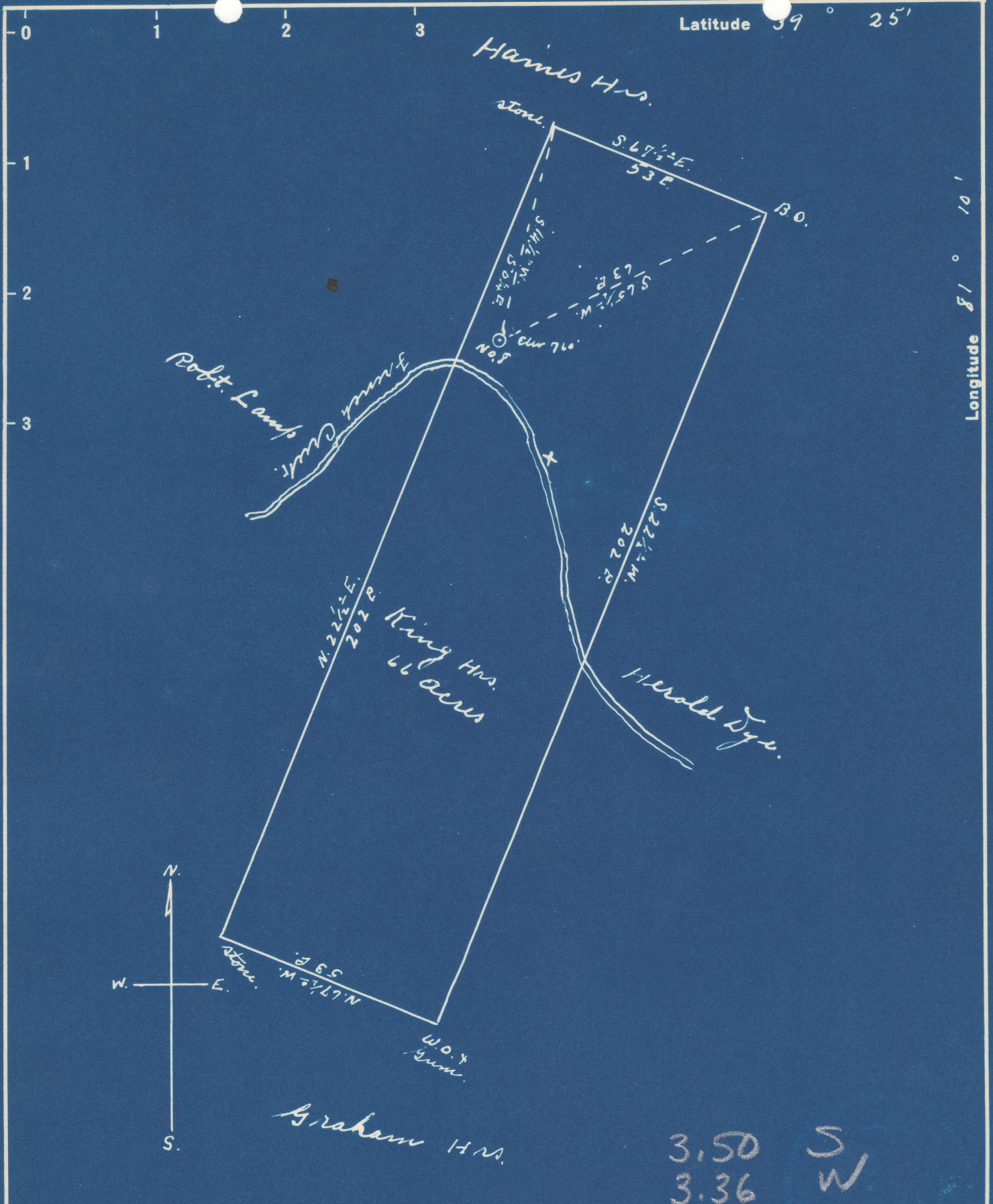


Latitude 39° 25'

Longitude 81° 10'



New Location
 Drill Deeper
 Abandonment

Company G. A. Clovis
 Address St. Marys W. Va.
 Farm King Hrs.
 Tract _____ Acres 66 Lease No. _____
 Well (Farm) No. 8 Serial No. _____
 Elevation (Spirit Level) 760'
 Quadrangle St. Marys.
 County Pleasants District Washington
 Engineer Robert R. Anderson
 By Jno Triplett, Surveyor
 Engineer's Registration No. 296
 File No. _____ Drawing No. _____
 Date Apr. 9, 1949 Scale 1" = 30 P.

STATE OF WEST VIRGINIA
 DEPARTMENT OF MINES
 OIL AND GAS DIVISION
 CHARLESTON

WELL LOCATION MAP
 FILE NO. PLEAS-327-A

+ Denotes location of well on United States Topographic Maps, scale 1 to 62,500, latitude and longitude lines being represented by border lines as shown.

- Denotes one inch spaces on border line of original tracing.