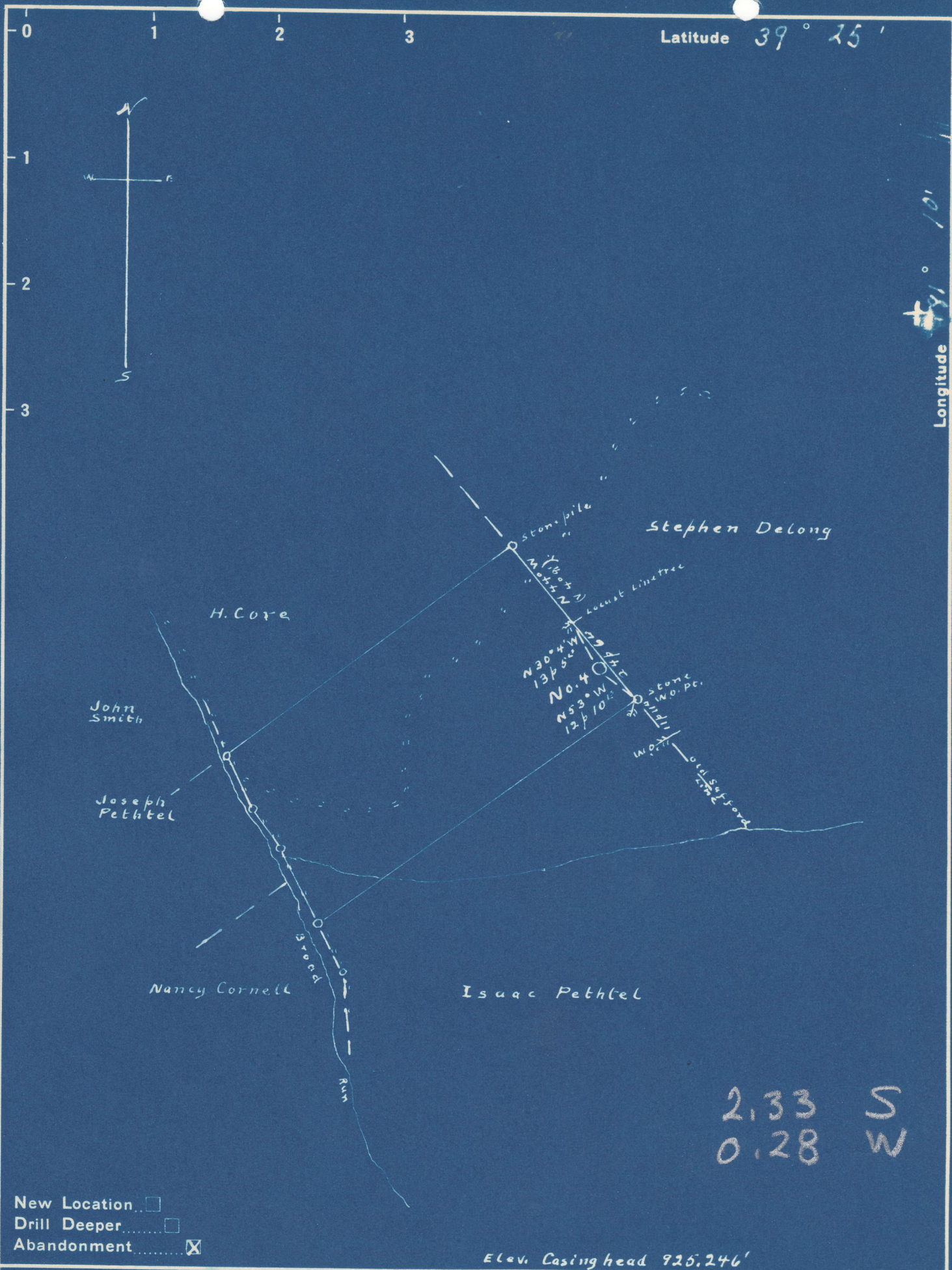


Latitude 39° 25'

Longitude 81° 10'



2.33 S
0.28 W

- New Location
- Drill Deeper
- Abandonment

Elev. Casing head 925.246'

Company J. R. Bull
 Address Sistersville, W. Va.
 Farm Rebecca DeLong
 Tract 1 Acres 28 Lease No. 53093
 Well (Farm) No. 4 Serial No. _____
 Elevation (Spirit Level) 923.248'
 Quadrangle St. Marys
 County Pleasants District Washington
 Engineer Don L. Riggle
 Engineer's Registration No. _____
 File No. 046-SP11 Drawing No. 1369
 Date April 13, 48 Scale 1" = 30'

STATE OF WEST VIRGINIA
 DEPARTMENT OF MINES
 OIL AND GAS DIVISION
 CHARLESTON

WELL LOCATION MAP

FILE NO. PLEAS-340-A

+ Denotes location of well on United States Topographic Maps, scale 1 to 62,500, latitude and longitude lines being represented by border lines as shown.

- Denotes one inch spaces on border line of original tracing.