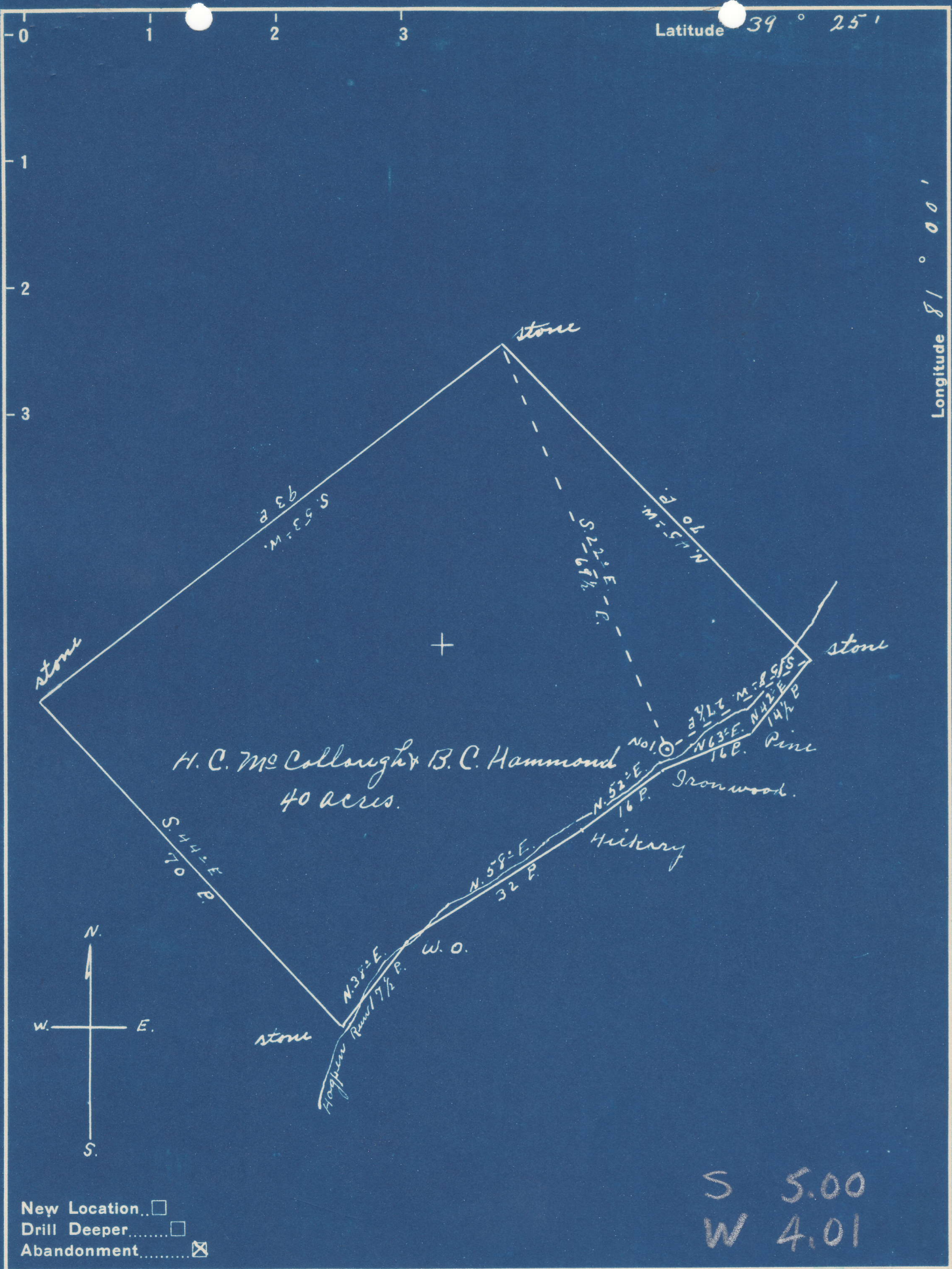


Latitude 39° 25'

Longitude 81° 00'



H. C. Mc Collough & B. C. Hammond
40 acres.

S 5.00
W 4.01

- New Location...
- Drill Deeper.....
- Abandonment.....

Company Haulon Oil Company
 Address Sistersville W. Va
 Farm H.C. Mc Collough & B.C. Hammond
 Tract _____ Acres 40 Lease No. _____
 Well (Farm) No. 1 Serial No. _____
 Elevation (Spirit Level) 880'
 Quadrangle St. Marys
 County Pleasants District McKim
 Engineer Robert R. Anderson
 By Jno Triplett Surveyor
 Engineer's Registration No. 296
 File No. _____ Drawing No. _____
 Date Nov. 26 1949 Scale 1" = 20 P.

STATE OF WEST VIRGINIA
 DEPARTMENT OF MINES
 OIL AND GAS DIVISION
 CHARLESTON

WELL LOCATION MAP
 FILE NO. PLEAS-360-A

- + Denotes location of well on United States Topographic Maps, scale 1 to 62,500, latitude and longitude lines being represented by border lines as shown.
- Denotes one inch spaces on border line of original tracing.