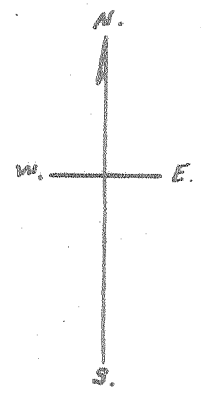
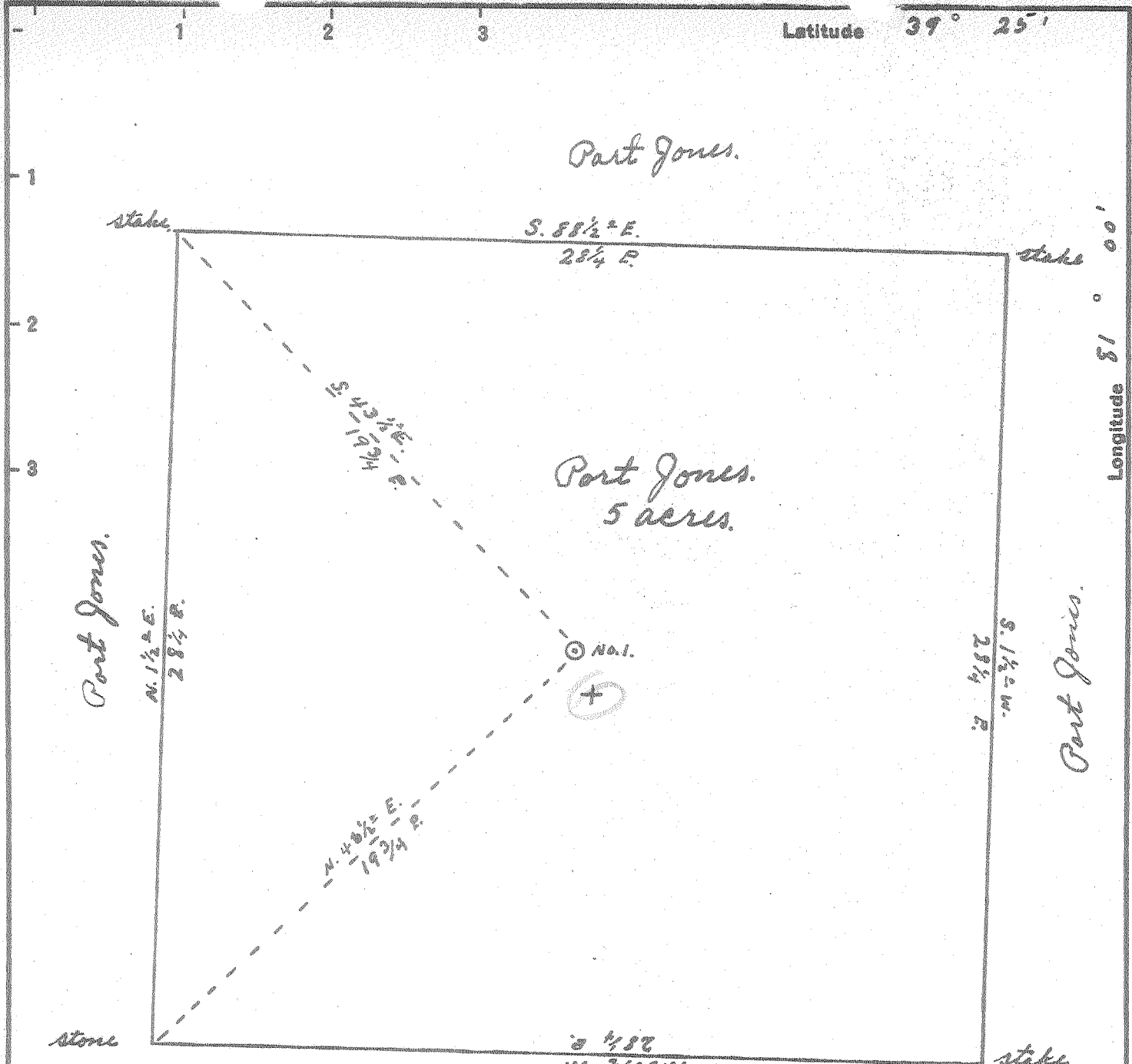


Latitude 39° 25'



New Location...
 Drill Deeper...
 Abandonment...

FEB 23 1953

3.6 W
 4.65 Q

Company St. Marys Pipe & Supply Co.
 Address Box 179 St. Marys, W.Va.
 Farm Part Jones.
 Tract _____ Acres 5 Lease No. _____
 Well (Farm) No. 1 Serial No. _____
 Elevation (Spirit Level) 880'
 Quadrangle St. Marys
 County Pleasants District Cabayette
 Engineer Robert R. Anderson
By Geo Triplett, Surveyor.
 Engineer's Registration No. 296
 File No. _____ Drawing No. _____
 Date Feb. 5, 1953 Scale 1" = 5 P.

STATE OF WEST VIRGINIA
 DEPARTMENT OF MINES
 OIL AND GAS DIVISION
 CHARLESTON

WELL LOCATION MAP
 FILE NO. PLEAS-567-A

+ Denotes location of well on United States Topographic Maps, scale 1 to 62,500, latitude and longitude lines being represented by border lines as shown.

- Denotes one inch spaces on border line of original tracing.

"IMPERIAL" TRACING CLOTH
 K & S CO., N. Y.