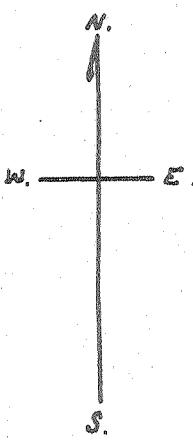
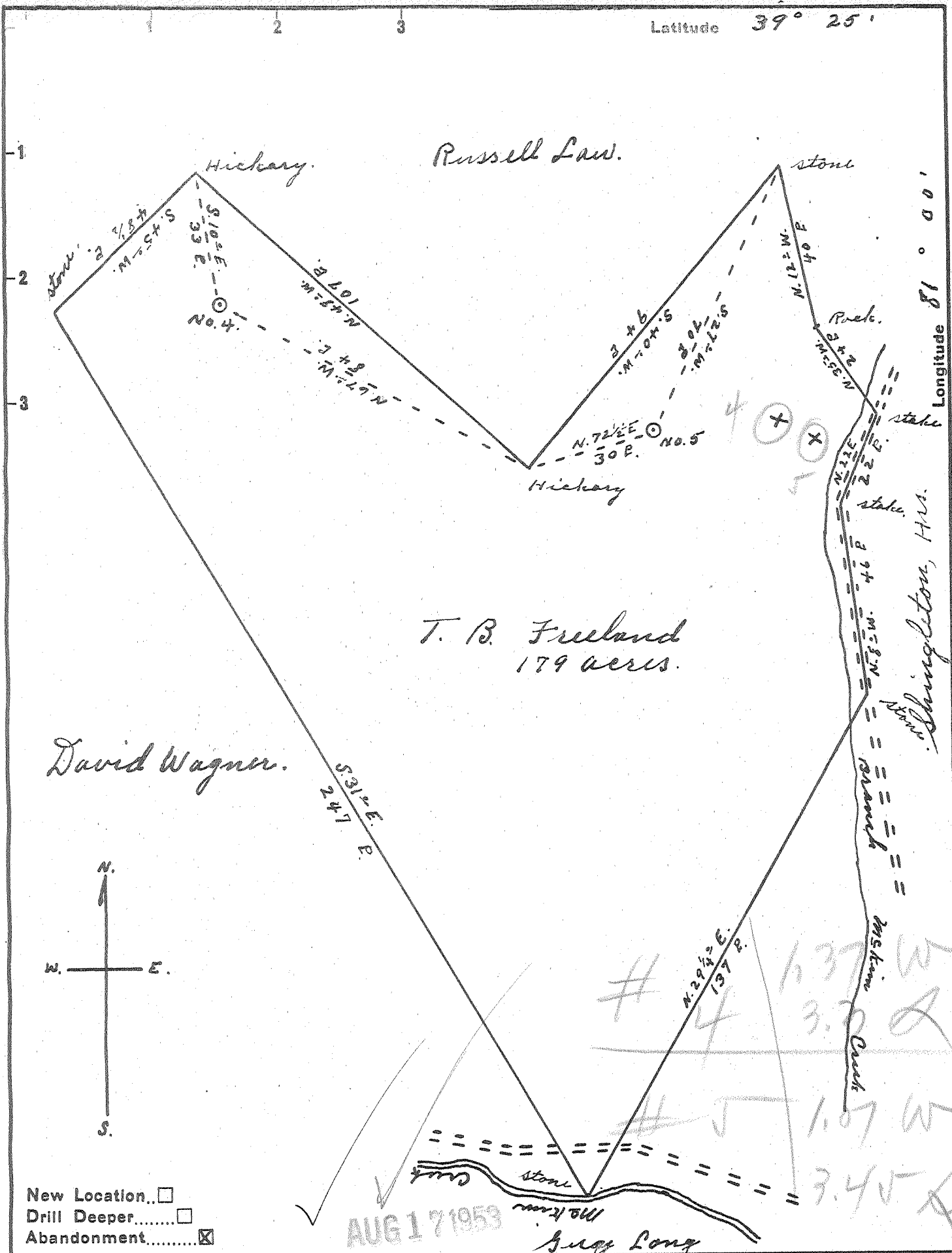


Latitude 39° 25'



New Location...
 Drill Deeper.....
 Abandonment.....

AUG 17 1953

Company St. Marys Pipe & Supply Co
 Address St. Marys W.Va.
 Farm T. B. Freeland
 Tract _____ Acres 179 Lease No. _____
 Well (Farm) No. 4 & 5 Serial No. _____
 Elevation (Spirit Level) no. 4, 1020', no. 5 882'
 Quadrangle St. Marys.
 County Pleasants District Lafayette
 Engineer Robert R. Anderson
 By Jno Triplett, surveyor
 Engineer's Registration No. 296
 File No. _____ Drawing No. _____
 Date July 31, 1953 Scale 1" = 30 P.

STATE OF WEST VIRGINIA
 DEPARTMENT OF MINES
 OIL AND GAS DIVISION
 CHARLESTON

WELL LOCATION MAP
 FILE NO. PLEAS-577-A-#4
PLEAS-578-A-#5

+ Denotes location of well on United States Topographic Maps, scale 1 to 62,500, latitude and longitude lines being represented by border lines as shown.
 - Denotes one inch spaces on border line of original tracing.

T. B. FREELAND nos. 4 & 5 - ST. MARYS PIPE & SUPPLY CO. - PLEAS-577-578-A