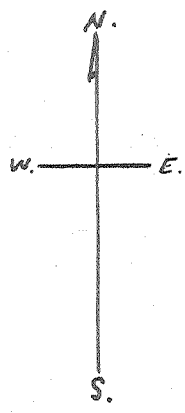


Latitude 39° 30'

Longitude 81° 05'



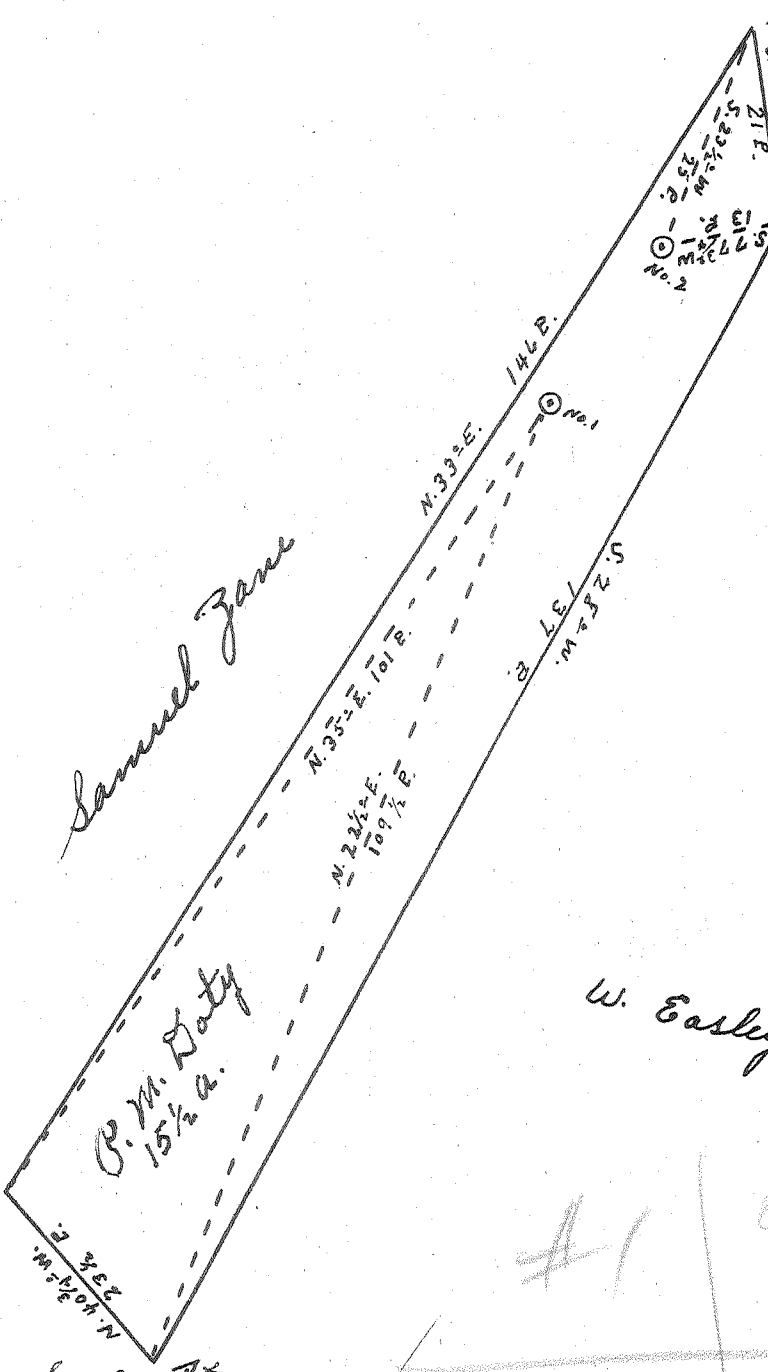
*Samuel Zone*

*Stone & Bush.*  
*W. Easley*

*Jack Oak.*

*W. Easley.*

*C. J. Barnhart*



#1 0.7 W  
3.5 W  
#2 0.63 W  
3.47 W

OCT 20 1953

New Location...   
Drill Deeper...   
Abandonment...

Company St. Marys Pipe & Supply Co.  
Address St. Marys, W. Va.  
Farm P. M. Doty  
Tract \_\_\_\_\_ Acres 15 1/2 Lease No. \_\_\_\_\_  
Well (Farm) No. 1.42 Serial No. \_\_\_\_\_  
Elevation (Spirit Level) No. 1 1058 No. 2 1060'  
Quadrangle St. Marys  
County Pleasants District Union  
Engineer Robert R. Anderson  
By Geo Triplett, Surveyor.  
Engineer's Registration No. 296  
File No. \_\_\_\_\_ Drawing No. \_\_\_\_\_  
Date Oct. 1, 1953 Scale 1" = 20 F.

STATE OF WEST VIRGINIA  
DEPARTMENT OF MINES  
OIL AND GAS DIVISION  
CHARLESTON

WELL LOCATION MAP

FILE NO. PLEAS-579-A-#1  
PLEAS-580-A-#2

+ Denotes location of well on United States Topographic Maps, scale 1 to 62,500, latitude and longitude lines being represented by border lines as shown.  
- Denotes one inch spaces on border line of original tracing.

P. M. DOTY nos. 1 & 2 - ST. MARYS PIPE & SUPPLY CO. - PLEAS-579-A & 580-A