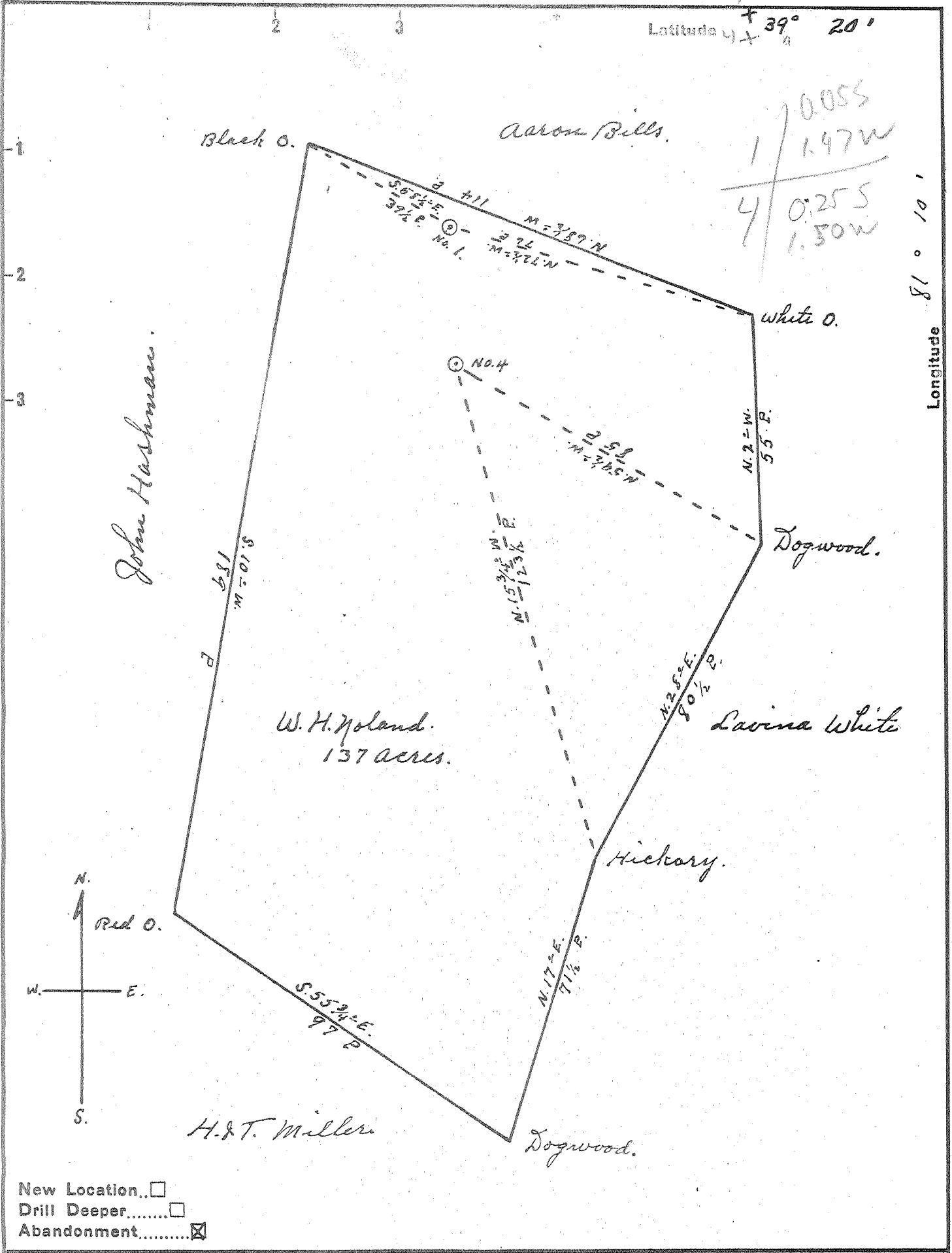


Latitude $39^{\circ} 20'$

Longitude $81^{\circ} 10'$

1	0.055
4	1.47W
	0.255
	1.50W



New Location..
 Drill Deeper.....
 Abandonment.....

Company Dinsmoor & Co.
 Address St. Marys, W. Va.
 Farm W. H. Noland
 Tract _____ Acres 137 Lease No. _____
 Well (Farm) No. 174 Serial No. _____
 Elevation (Spirit Level) No. 1, 1160; No. 4, 1060.
 Quadrangle St. Marys
 County Pleasants District Jefferson
 Engineer Robert R. Anderson
134 Jno Triplett, Surveyor.
 Engineer's Registration No. 296
 File No. _____ Drawing No. _____
 Date Oct. 7, 1953 Scale 1" = 30 P.

STATE OF WEST VIRGINIA
 DEPARTMENT OF MINES
 OIL AND GAS DIVISION
 CHARLESTON

WELL LOCATION MAP

FILE NO. PLEAS-583-A-#1
PLEAS-586-A-#4

+ Denotes location of well on United States Topographic Maps, scale 1 to 62,500, latitude and longitude lines being represented by border lines as shown.

- Denotes one inch spaces on border line of original tracing.