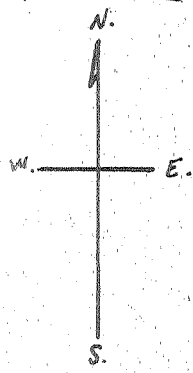
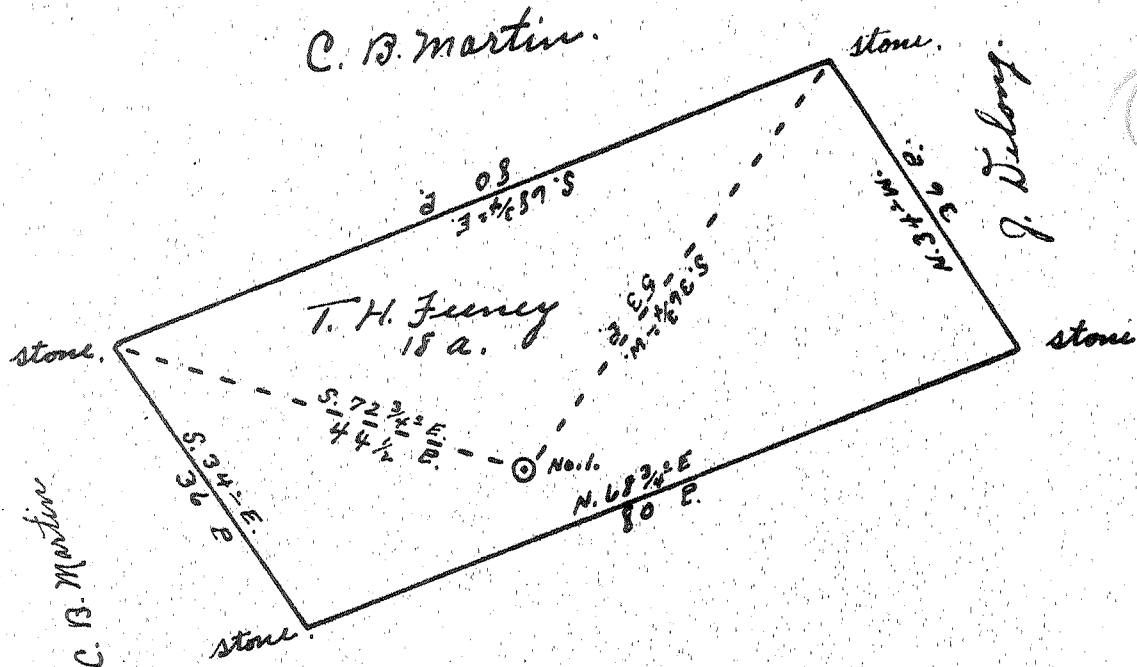


Latitude 37° 25'

Longitude 81° 15'



O. M. Powell.

NOV 17 1953

New Location...
 Drill Deeper...
 Abandonment...

Company Dinsmoor & Company
 Address St. Marys, W. Va.
 Farm T. H. Feeney
 Tract _____ Acres 18 Lease No. _____
 Well (Farm) No. 1 Serial No. _____
 Elevation (Spirit Level) 880'
 Quadrangle Marietta
 County Pleasants District Jefferson
 Engineer Robert R. Anderson
By Jno Triplett, Surveyor.
 Engineer's Registration No. 296
 File No. _____ Drawing No. _____
 Date Oct. 29, 1953 Scale 1" = 20 P.

STATE OF WEST VIRGINIA
 DEPARTMENT OF MINES
 OIL AND GAS DIVISION
 CHARLESTON

WELL LOCATION MAP
 FILE NO. PLEAS-593-A

+ Denotes location of well on United States Topographic Maps, scale 1 to 62,500, latitude and longitude lines being represented by border lines as shown.

- Denotes one inch spaces on border line of original tracing.

T. H. FEENEY JR. | DINSMOOR & CO. | PLEAS-593-A