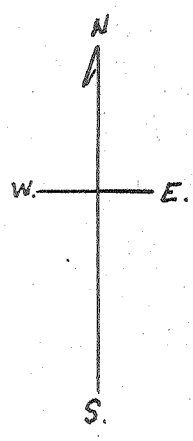
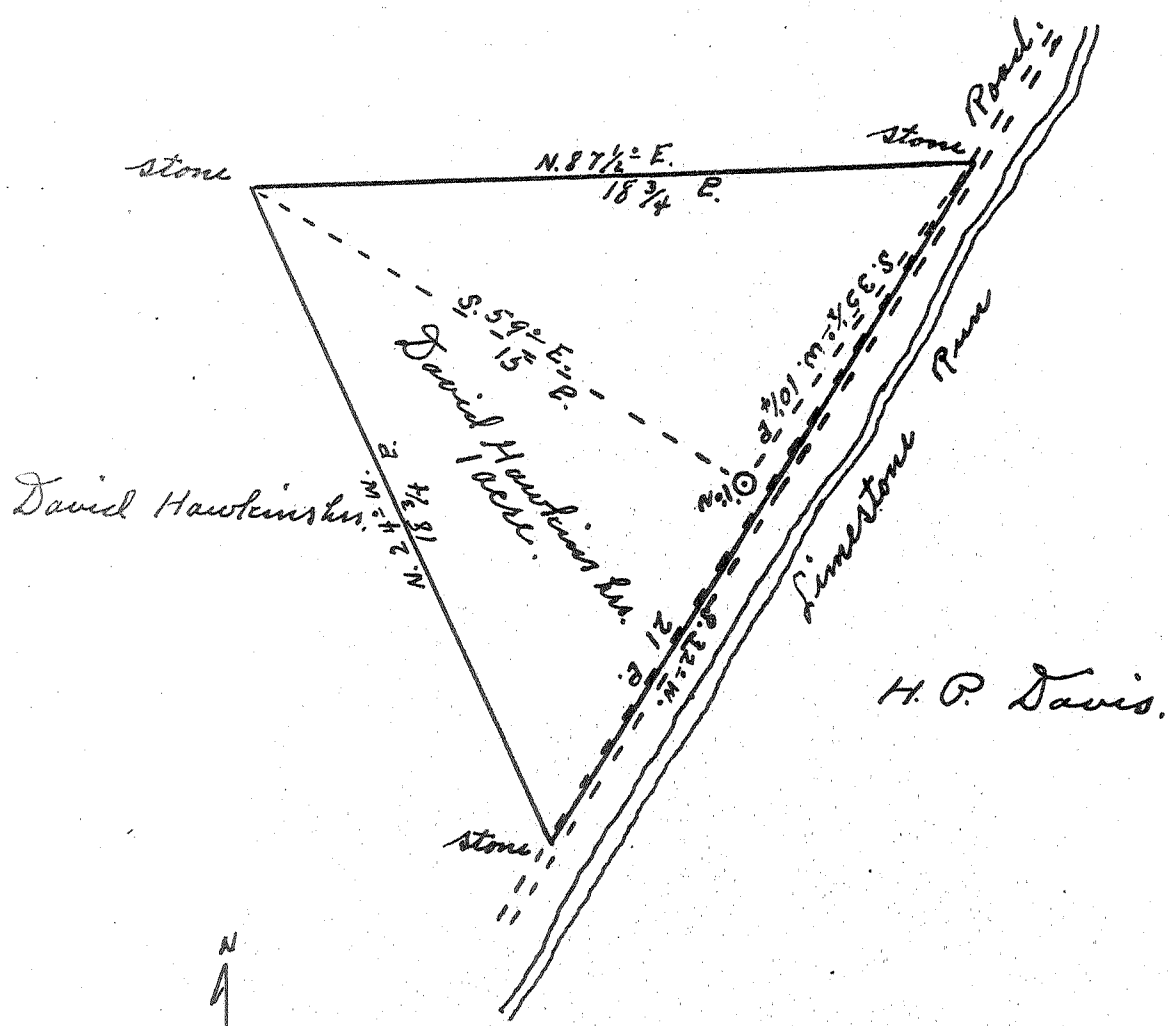


Latitude 39° 20'

Longitude 81° 15'

David Hawkins hrs.



New Location...   
 Drill Deeper.....   
 Abandonment.....

NOV 17 1953

0.85 W  
 0.97 W

Company Dinsmor & Company  
 Address St. Marys, W. Va.  
 Farm David Hawkins hrs.  
 Tract \_\_\_\_\_ Acres 1. Lease No. \_\_\_\_\_  
 Well (Farm) No. 1. Serial No. \_\_\_\_\_  
 Elevation (Spirit Level) 740'  
 Quadrangle Marietta  
 County Pleasants District Jefferson  
 Engineer Robert R. Anderson.  
137 No. 1st St., Surry, Va. 296  
 Engineer's Registration No. \_\_\_\_\_  
 File No. \_\_\_\_\_ Drawing No. \_\_\_\_\_  
Oct. 30 1953 Scale 1" = 5 E.

STATE OF WEST VIRGINIA  
 DEPARTMENT OF MINES  
 OIL AND GAS DIVISION  
 CHARLESTON

WELL LOCATION MAP  
 FILE NO. PLEAS-594-A

+ Denotes location of well on United States Topographic Maps, scale 1 to 62,500, latitude and longitude lines being represented by border lines as shown.

- Denotes one inch spaces on border line of original tracing.

DAVID HAWKINS TRACT - DINSMOR & CO. - PLEAS-594-A