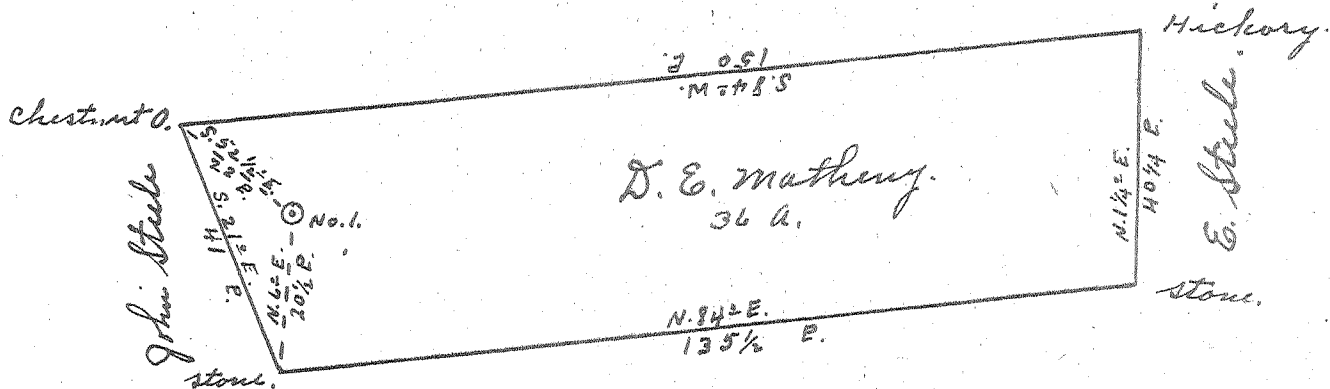
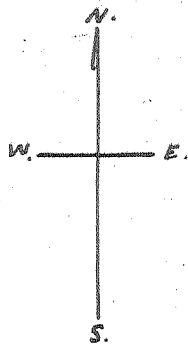


H. a. Matheny



+ H. a. Matheny



New Location..
 Drill Deeper.....
 Abandonment.....

DEC 7 1953

For W
V. 7 2

Company Dunsmuir & Company
 Address St. Marys W. Va.
 Farm D. E. Matheny
 Tract _____ Acres 36 Lease No. _____
 Well (Farm) No. 1 Serial No. _____
 Elevation (Spirit Level) No. 1. 1000'
 Quadrangle St. Marys
 County Pleasants District Jefferson
 Engineer Robert R. Anderson
 By Geo. Triplett, Surveyor
 Engineer's Registration No. 296
 File No. _____ Drawing No. _____
 Date Nov. 21 1953 Scale 1" = 30 E.

STATE OF WEST VIRGINIA
 DEPARTMENT OF MINES
 OIL AND GAS DIVISION
 CHARLESTON

WELL LOCATION MAP
 FILE NO. PLEAS-608-A

+ Denotes location of well on United States Topographic Maps, scale 1 to 62,500, latitude and longitude lines being represented by border lines as shown.

- Denotes one inch spaces on border line of original tracing.

D. E. MATHENY NO. 1 - DUNSMUIR & CO. - PLEAS-608-A