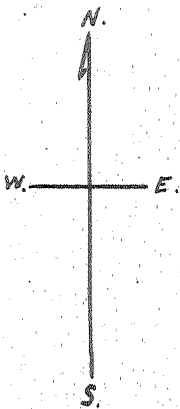
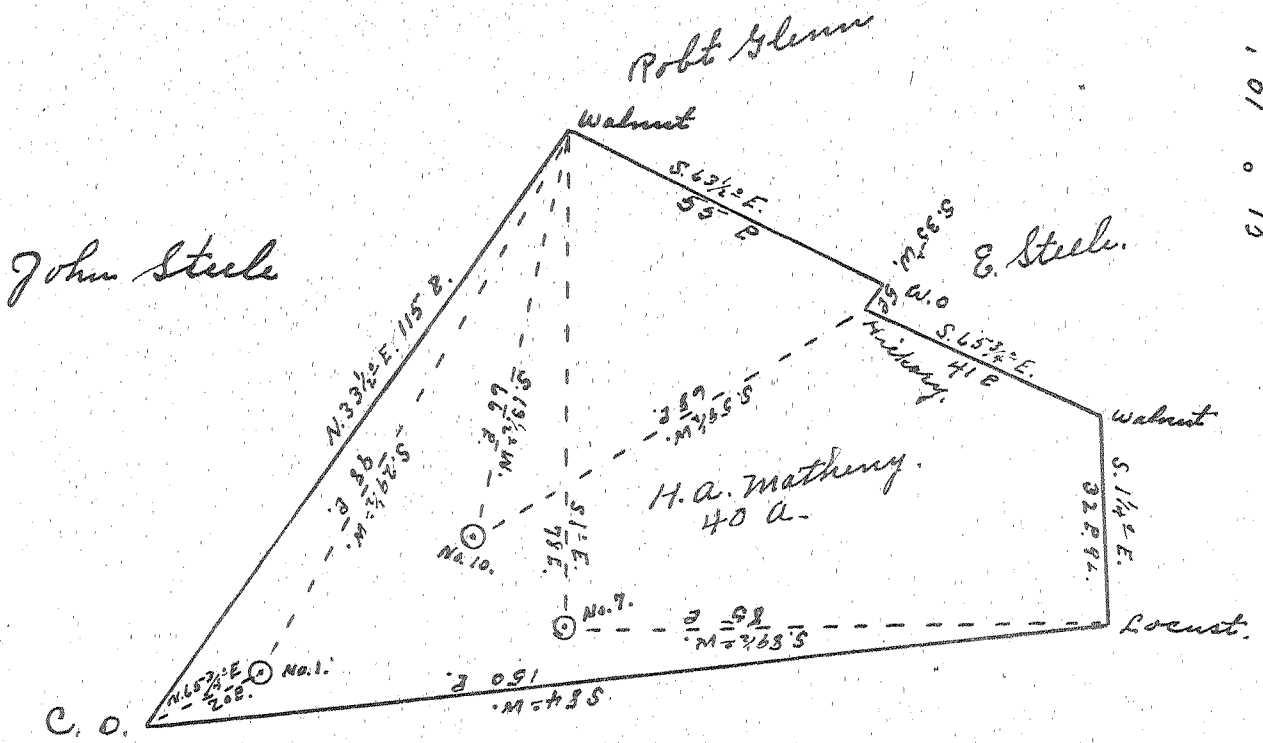


Latitude 9° 25'

Longitude 81° 10'



H.A. Matheny.

#1  
5.77

#7  
3.84

#10  
3.94

5.70

PLEAS-609-A-#1  
PLEAS-610-A-#7  
PLEAS-611-A-#10

DEC 7 1953

New Location..   
 Drill Deeper.....   
 Abandonment.....

Company Dinsmore & Company  
 Address St. Marys W.Va.  
 Farm H.A. Matheny  
 Tract \_\_\_\_\_ Acres 40 Lease No. \_\_\_\_\_  
 Well (Farm) No. 1, 7, & 10 Serial No. \_\_\_\_\_  
 Elevation (Spirit Level) 221.100' No. 7, 10, 10, 10, 10, 10  
 Quadrangle St. Marys W.Va.  
 County Pleasants District Jefferson  
 Engineer Robert R. Anderson  
By Jno. Triplett, Surveyor. 296  
 Engineer's Registration No. \_\_\_\_\_  
 File No. \_\_\_\_\_ Drawing No. \_\_\_\_\_  
 Date Nov. 20 1953 Scale 1" = 30 F.

STATE OF WEST VIRGINIA  
 DEPARTMENT OF MINES  
 OIL AND GAS DIVISION  
 CHARLESTON

WELL LOCATION MAP  
 FILE NO. see Above

+ Denotes location of well on United States Topographic Maps, scale 1 to 62,500, latitude and longitude lines being represented by border lines as shown.

- Denotes one inch spaces on border line of original tracing.

H.A. MATHENY NOS. 1, 7 & 10 - DINSMORE & CO. - PLEAS-609-10-11-A