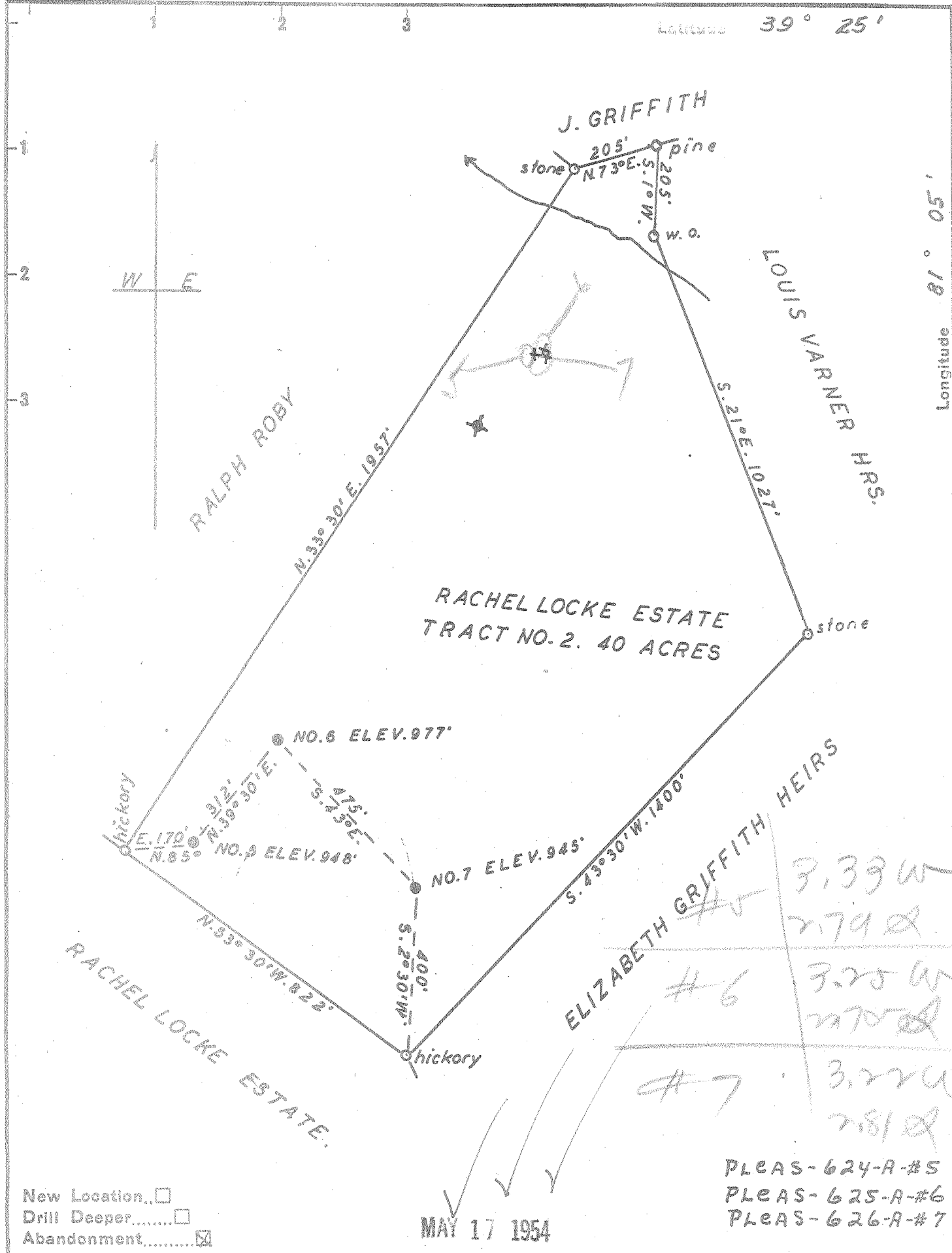


Latitude 39° 25'

Longitude 81° 05'



New Location...
 Drill Deeper.....
 Abandonment.....

MAY 17 1954

PLEAS-624-A-#5
 PLEAS-625-A-#6
 PLEAS-626-A-#7

Company	PATTERSON & ZINN		
Address	RT. 5. MARIETTA OHIO		
Farm	RACHEL LOCKE ESTATE		
Tract	2	Acres	40
Lease No.	117 B		
Well (Farm) No.	5-6-7	Serial No.	
Elevation (Spirit Level)	948'	977'	945'
Quadrangle	ST. MARYS		
County	PLEASANTS	District	MCKIM
Engineer	George R. Clarke		
Engineer's Registration No.	102		
File No.		Drawing No.	4
Date	4-17-1954	Scale	1" = 300'

STATE OF WEST VIRGINIA
 DEPARTMENT OF MINES
 OIL AND GAS DIVISION
 CHARLESTON

WELL LOCATION MAP
 FILE NO. See Above

+ Denotes location of well on United States Topographic Maps, scale 1 to 62,500, latitude and longitude lines being represented by border lines as shown.
 - Denotes one inch spaces on border line of original tracing.

RACHEL LOCKE ESTATE WBS. 5, 6, & 7 - PATTERSON & ZINN - PLEAS-624-5-6-A