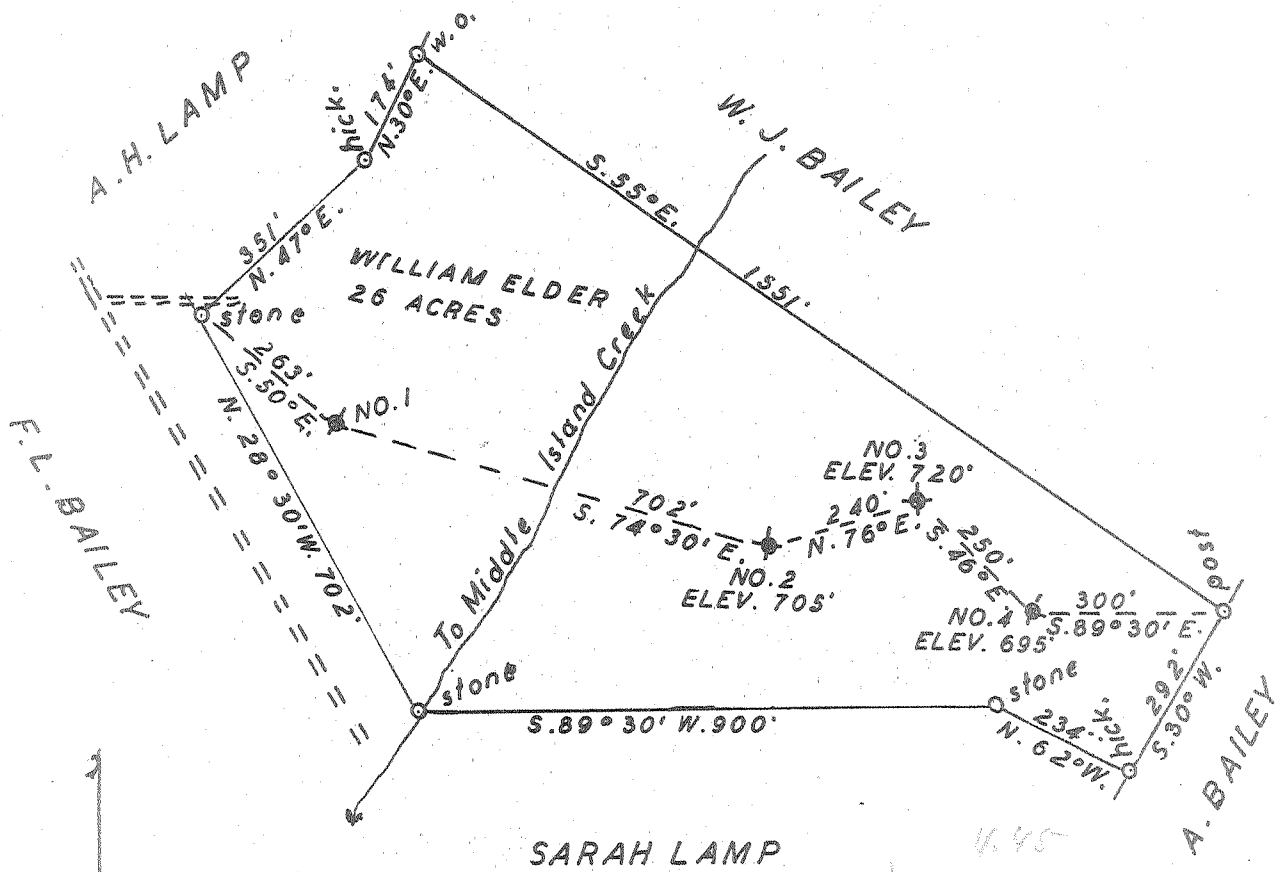


Latitude 9° 25'

Longitude 81° 05'



New Location..   
 Drill Deeper.....   
 Abandonment.....

MAY 31 1954

#2  
#3  
#4

1.1  
4.35  
1.08  
4.35

PLEAS-635-A-#2  
 PLEAS-636-A-#3  
 PLEAS-637-A-#4

Company PATTERSON & ZINN  
 Address RT. 5. MARIETTA. OHIO  
 Farm WILLIAM ELDER  
 Tract \_\_\_\_\_ Acres 26 Lease No. \_\_\_\_\_  
 Well (Farm) No. 2-3-4 Serial No. \_\_\_\_\_  
 Elevation (Spirit Level) NO. 2. 705'. NO. 3. 720'. NO. 4. 695'  
 Quadrangle ST. MARYS  
 County PLEASANTS District UNION  
 Engineer George R. Clarke  
 Surveyed by Homer W. Myers 102  
 Engineer's Registration No. \_\_\_\_\_  
 File No. \_\_\_\_\_ Drawing No. 2  
 Date 4-9-1954 Scale 1" = 300'

STATE OF WEST VIRGINIA  
 DEPARTMENT OF MINES  
 OIL AND GAS DIVISION  
 CHARLESTON

**WELL LOCATION MAP**  
 FILE NO. See Above

+ Denotes location of well on United States Topographic Maps, scale 1 to 62,500, latitude and longitude lines being represented by border lines as shown.  
 - Denotes one inch spaces on border line of original tracing.

WILLIAM ELDER nos. 2, 3, & 4 - PATTERSON & ZINN - 635-6-7-A



STATE OF WEST VIRGINIA  
DEPARTMENT OF MINES  
OIL AND GAS DIVISION

174

Quadrangle St. Marys

WELL RECORD

Permit No. D 515-1037

Oil or Gas Well oil  
(KIND)

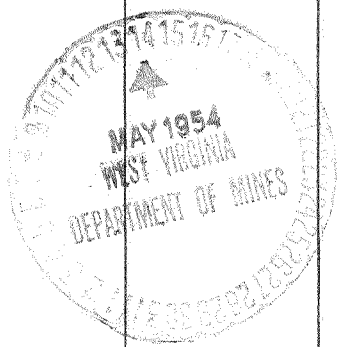
Company Patterson & Zinn  
 Address Route #5, Marietta, Ohio.  
 Farm William Elder Acres 26  
 Location (waters) Middle Island Creek  
 Well No. 4 Elev. 695'  
 District Union County Pleasants  
 The surface of tract is owned in fee by William Elder  
 Address St. Marys, W. Va.  
 Mineral rights are owned by Same party  
 Address \_\_\_\_\_  
 Drilling commenced No records  
 Drilling completed No Records  
 Date Shot \_\_\_\_\_ From \_\_\_\_\_ To \_\_\_\_\_  
 With No records  
 Open Flow \_\_\_\_\_ /10ths Water in \_\_\_\_\_ Inch  
 \_\_\_\_\_ /10ths Merc. in \_\_\_\_\_ Inch  
 Volume \_\_\_\_\_ Cu. Ft.  
 Rock Pressure \_\_\_\_\_ lbs. \_\_\_\_\_ hrs.  
 Oil No records bbls., 1st 24 hrs.  
 Fresh water \_\_\_\_\_ feet \_\_\_\_\_ feet  
 Salt water \_\_\_\_\_ feet \_\_\_\_\_ feet

Casing and Tubing	Used in Drilling	Left in Well	Packers
Size			Kind of Packer
16			
13			
10			Size of
8 1/4	125'	125'	
6 3/4	590'	590'	Depth set
5 3/16			
3	400'		Perf. top
2	600'		Perf. bottom
Liners Used			Perf. top
			Perf. bottom

CASING CEMENTED \_\_\_\_\_ SIZE \_\_\_\_\_ No. Ft. \_\_\_\_\_ Date \_\_\_\_\_  
No records

COAL WAS ENCOUNTERED AT \_\_\_\_\_ FEET \_\_\_\_\_ INCHES  
 \_\_\_\_\_ FEET \_\_\_\_\_ INCHES \_\_\_\_\_ FEET \_\_\_\_\_ INCHES  
 \_\_\_\_\_ FEET \_\_\_\_\_ INCHES \_\_\_\_\_ FEET \_\_\_\_\_ INCHES

Formation	Color	Hard or Soft	Top	Bottom	Oil, Gas or Water	Depth Found	Remarks
Sand			618'	632'	oil	618'	Cow Run Total depth 632'



APR 22 1955

(Over)

