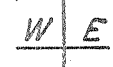
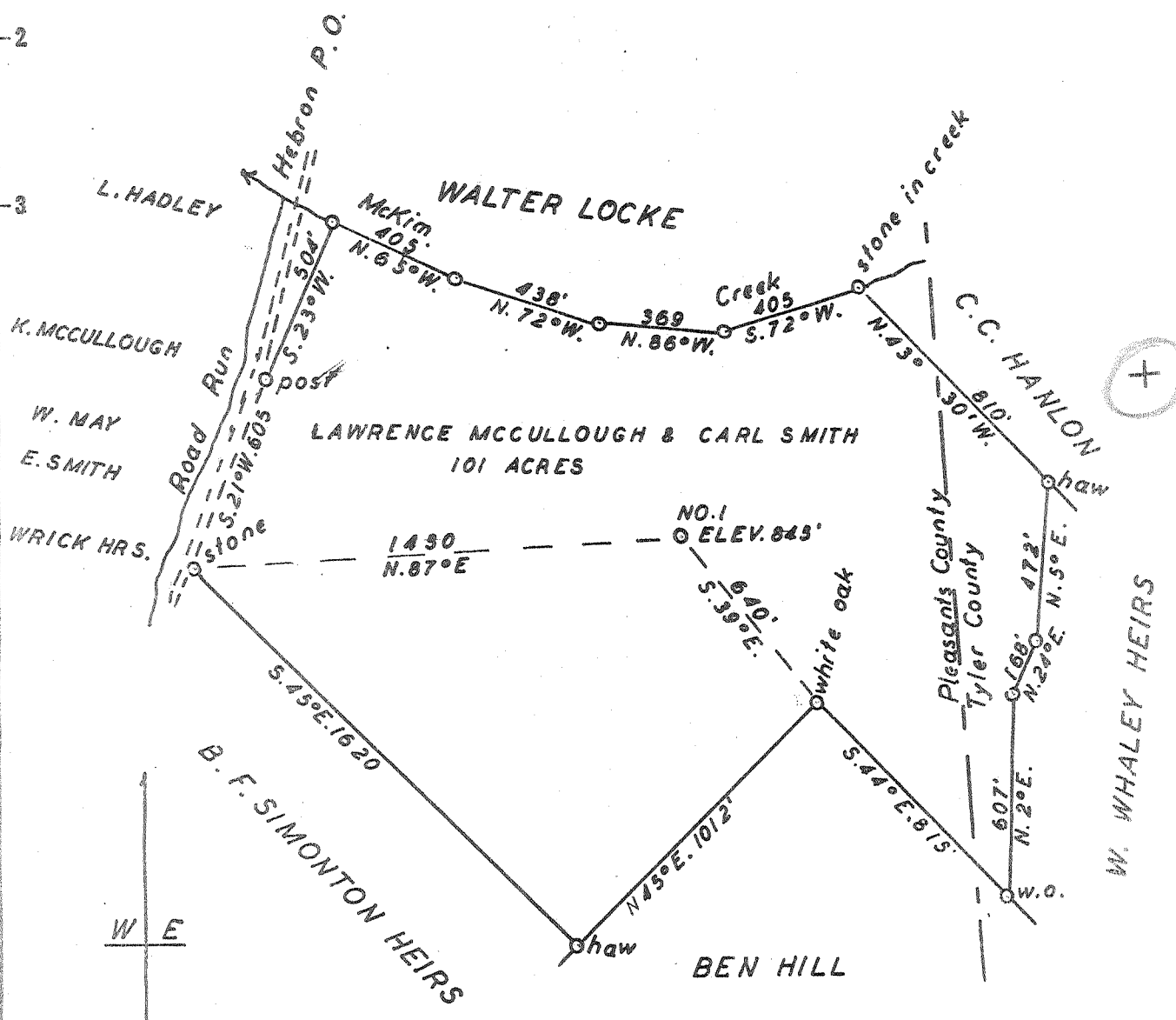


Latitude 9° 25'

Longitude 81° 00'



- New Location..
- Drill Deeper.....
- Abandonment.....

JUN 21 1954

0.68 W  
 X.2 A

Company	ALVA MCCULLOUGH
Address	PENNSBORO. W. VA.
Farm	LAWRENCE MCCULLOUGH CARL SMITH
Tract	Acres 101 Lease No.
Well (Farm) No.	1 Serial No.
Elevation (Spirit Level)	845'
Quadrangle	ST. MARYS
County	PLEASANTS District LAFAYETTE
Engineer	George R. Clarke No. 102
Engineer's Registration No.	
Surveyed by	Thomas W. Myers
File No.	Drawing No.
Date	JUNE 1, 1954 Scale 1" = 500'

STATE OF WEST VIRGINIA  
 DEPARTMENT OF MINES  
 OIL AND GAS DIVISION  
 CHARLESTON

**WELL LOCATION MAP**  
 FILE NO. PLEAS-641-R

- + Denotes location of well on United States Topographic Maps, scale 1 to 62,500, latitude and longitude lines being represented by border lines as shown.
- Denotes one inch spaces on border line of original tracing.

LAWRENCE MCCULLOUGH & CARL SMITH NO. 1 - ALVA MCCULLOUGH - PLEAS-641-A