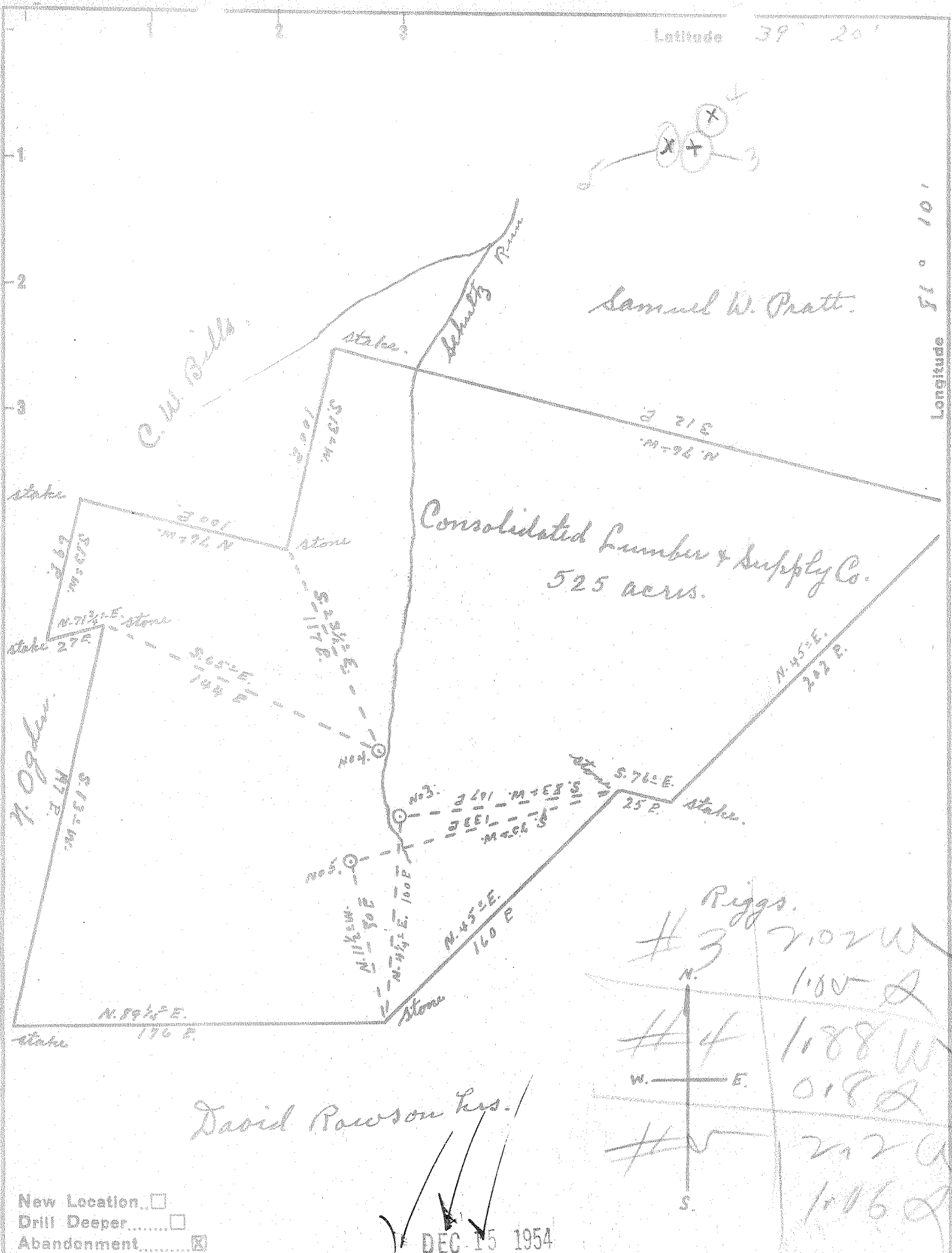


Latitude 39 20'

Longitude 81 10'



New Location...   
 Drill Deeper...   
 Abandonment...

DEC 15 1954

Company Dinsmoor and Company  
 Address St. Marys, W. Va.  
 Farm Consolidated Lumber & Supply Co.  
 Tract \_\_\_\_\_ Acres 52.5 Lease No. \_\_\_\_\_  
 Well (Farm) No. 34.25 Serial No. \_\_\_\_\_  
 Elevation (Spirit Level) No. 3, 940, No. 4, 920, No. 5, 830.  
 Quadrangle St. Marys  
 County Pleasants District Jefferson  
 Engineer Robert R. Anderson  
 By Geo. Triplett, Surveyor  
 Engineer's Registration No. 296  
 File No. \_\_\_\_\_ Drawing No. \_\_\_\_\_  
Aug. 25, 1954 Scale 1" = 60 E.

STATE OF WEST VIRGINIA  
 DEPARTMENT OF MINES  
 OIL AND GAS DIVISION  
 CHARLESTON

WELL LOCATION MAP  
 FILE NO. PLEAS-649-A-#5

+ Denotes location of well on United States Topographic Maps, scale 1 to 62,500, latitude and longitude lines being represented by border lines as shown.  
 - Denotes one inch spaces on border line of original tracing.