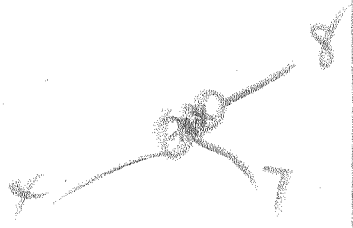
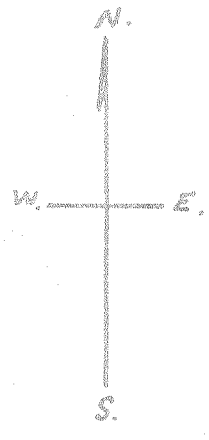
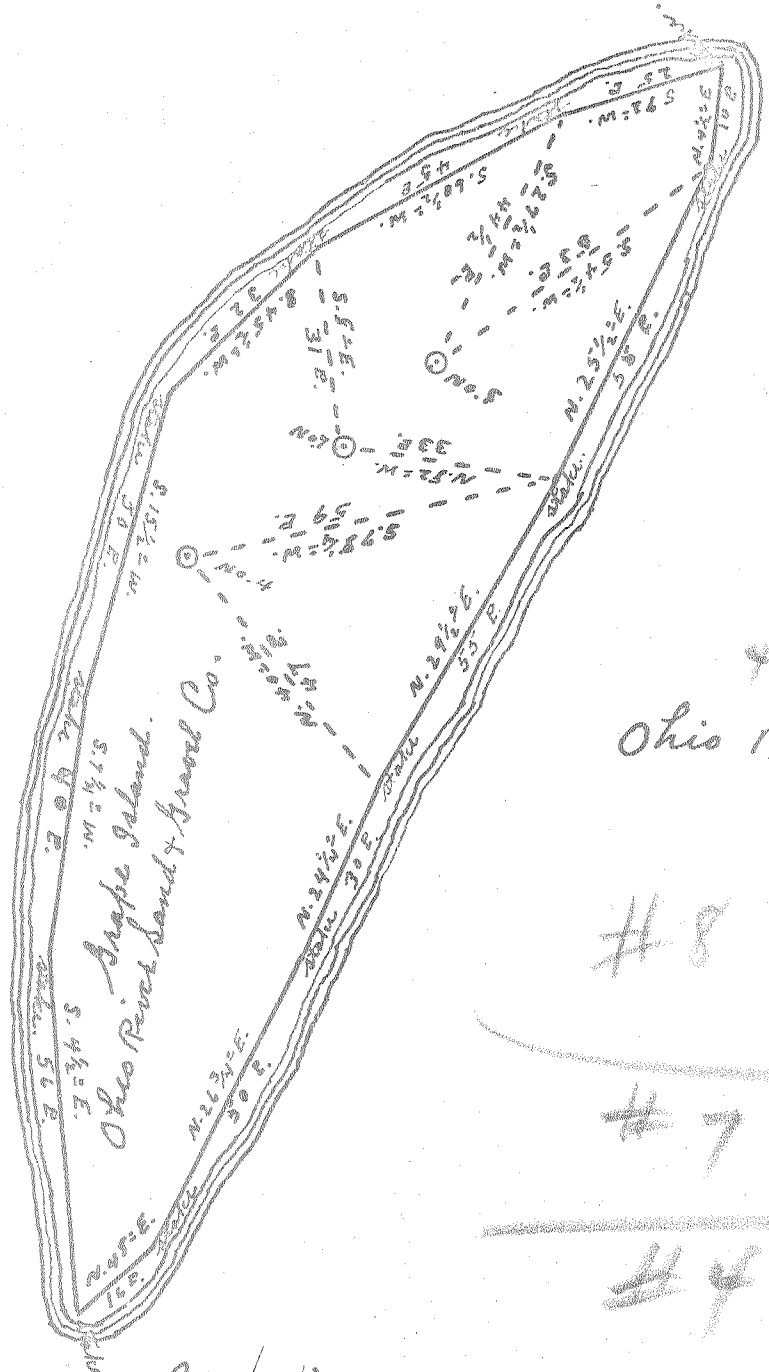


Ohio River.



Ohio River.

Ohio River.

#8	0.79 W
	X.79 E
#7	0.85 W
	X.83 E
#4	0.9 W
	X.88 E

PLEAS-654-A-#4
 PLEAS-657-A-#7
 PLEAS-658-A-#8

New Location
 Drill Deeper
 Abandonment

OCT 11 1954

Company D. C. Payne
 Address St. Marys W. Va.
 Farm Ohio River Sand & Gravel Co
 Tract _____ Acres 40 Lease No. _____
 Well (Farm) No. 4, 7, & 8 Serial No. _____
 Elevation (Spirit Level) No. 4, 607' No. 7, 612' No. 8, 614'
 Quadrangle St. Marys
 County Pleasants District W. Va.
 Engineer Robert R. Anderson
 Engineer's Registration No. _____
 File No. 182 Drawing No. 206
 Date Sept. 15, 1954 Scale 1" = 30 E.

STATE OF WEST VIRGINIA
 DEPARTMENT OF MINES
 OIL AND GAS DIVISION
 CHARLESTON

WELL LOCATION MAP
 FILE NO. See Above

+ Denotes location of well on United States Topographic Maps, scale 1 to 62,500, latitude and longitude lines being represented by border lines as shown.
 - Denotes one inch spaces on border line of original tracing.

OHIO RIVER SAND & GRAVEL CO, Nos. 4, 7, & 8 - D. C. PAYNE - PLEAS-654, 657-8-A