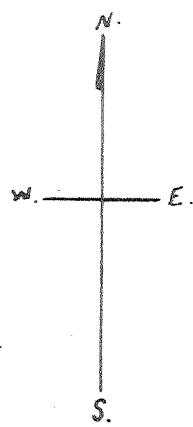
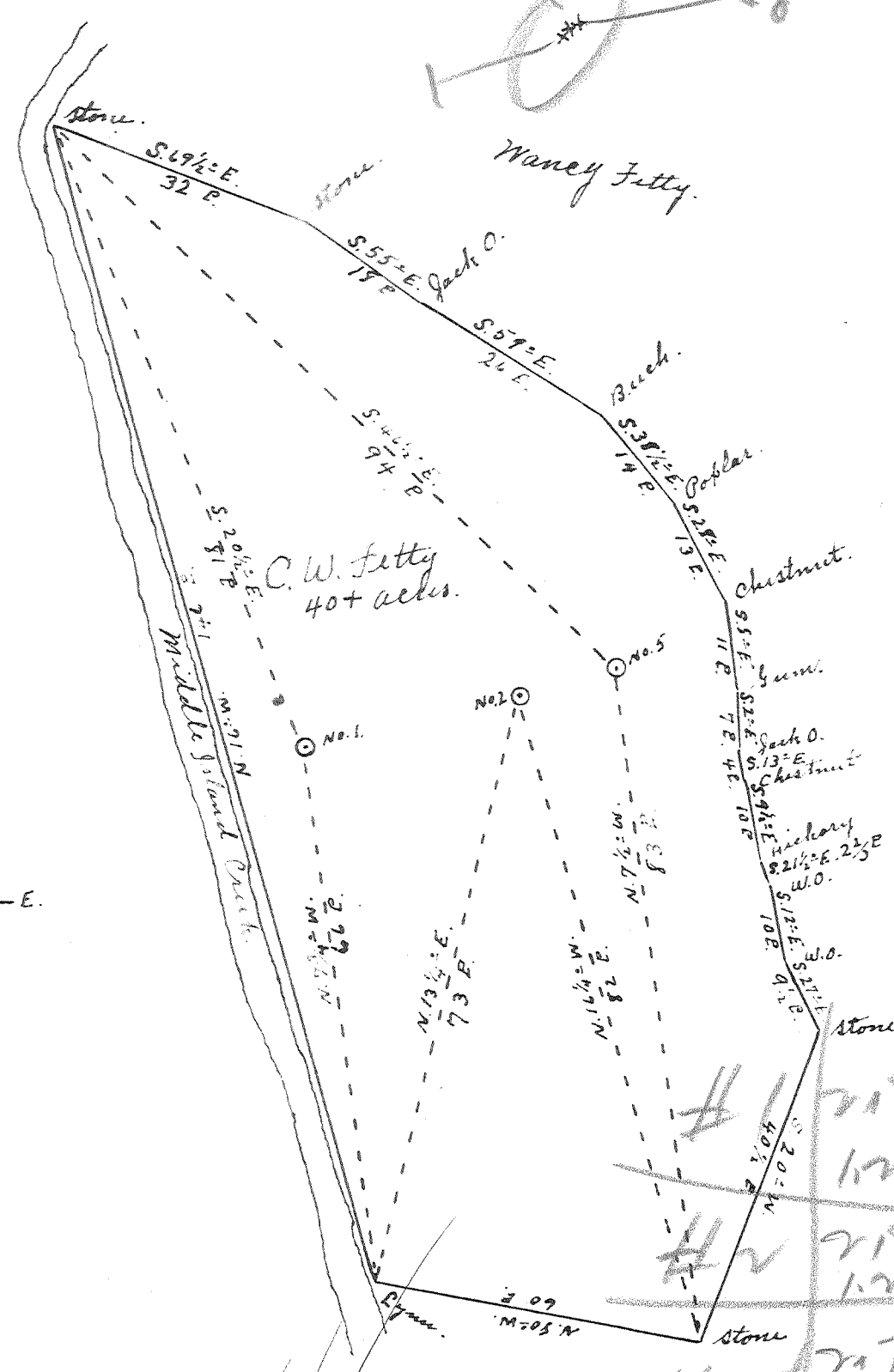


Latitude 39° 25'

Longitude 81° 05'



B. O. Riggs



New Location...   
Drill Deeper...   
Abandonment...

Inez Williams  
NOV 8 1954

Handwritten notes and numbers: 2182 W, 122 Q, 2180 W, 122 Q, 2172 W, 116 Q

Company Patterson & Zinn  
 Address Route 5, Marietta, Ohio  
 Farm C. W. Fetty  
 Tract \_\_\_\_\_ Acres 40+ Lease No. \_\_\_\_\_  
 Well (Farm) No. 1, 2, & 5 Serial No. \_\_\_\_\_  
 Elevation (Spirit Level) No. 1, 608', No. 2, 650', No. 5, 730'  
 Quadrangle St. Marys  
 County Pleasants District McKim  
 Engineer Robert R. Anderson  
 By Inez Williams, Surveyor  
 Engineer's Registration No. 296  
 File No. \_\_\_\_\_ Drawing No. \_\_\_\_\_  
 Date Sept 29, 1954 Scale 1" = 20 P.

STATE OF WEST VIRGINIA  
DEPARTMENT OF MINES  
OIL AND GAS DIVISION  
CHARLESTON

WELL LOCATION MAP  
PLEAS-667-A-#1  
FILE NO. PLEAS-668-A-#2  
PLEAS-669-A-#5

+ Denotes location of well on United States Topographic Maps, scale 1 to 62,500, latitude and longitude lines being represented by border lines as shown.  
- Denotes one inch spaces on border line of original tracing.



STATE OF WEST VIRGINIA  
DEPARTMENT OF MINES  
OIL AND GAS DIVISION

189

WELL RECORD

Quadrangle \_\_\_\_\_  
 Permit No. 189  
 Company Patterson & Zinn  
c/o W. D. Patterson  
Rt. 5, Marietta, Ohio  
 Address C. W. Petty  
 Farm \_\_\_\_\_ Acres \_\_\_\_\_  
 Location (waters) \_\_\_\_\_  
 Well No. McKim Elev. 680  
 District \_\_\_\_\_ County \_\_\_\_\_  
 The surface of tract is owned in fee by \_\_\_\_\_  
 Address \_\_\_\_\_  
 Mineral rights are owned by \_\_\_\_\_  
 Address \_\_\_\_\_  
 Drilling commenced \_\_\_\_\_  
 Drilling completed \_\_\_\_\_  
 Date Shot \_\_\_\_\_ From \_\_\_\_\_ To \_\_\_\_\_  
 With \_\_\_\_\_  
 Open Flow \_\_\_\_\_ /10ths Water in \_\_\_\_\_ Inch  
 \_\_\_\_\_ /10ths Merc. in \_\_\_\_\_ Inch  
 Volume \_\_\_\_\_ Cu. Ft.  
 Rock Pressure \_\_\_\_\_ lbs. \_\_\_\_\_ hrs.  
 Oil \_\_\_\_\_ bbls., 1st 24 hrs.  
 Fresh water \_\_\_\_\_ feet \_\_\_\_\_ feet  
 Salt water \_\_\_\_\_ feet \_\_\_\_\_ feet

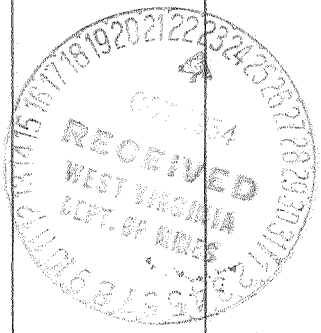
Oil or Gas Well \_\_\_\_\_ (KIND)

Casing and Tubing	Used in Drilling	Left in Well	Packers
Size			Kind of Packer
16			
13			
10			Size of
8 1/4 <u>61</u>		<u>695</u>	Depth set
6 3/8			
5 3/16			
3			Perf. top
2			Perf. bottom
Liners Used			Perf. top
			Perf. bottom

CASING CEMENTED \_\_\_\_\_ SIZE \_\_\_\_\_ No. Ft. \_\_\_\_\_ Date \_\_\_\_\_

COAL WAS ENCOUNTERED AT \_\_\_\_\_ FEET \_\_\_\_\_ INCHES  
 \_\_\_\_\_ FEET \_\_\_\_\_ INCHES \_\_\_\_\_ FEET \_\_\_\_\_ INCHES  
 \_\_\_\_\_ FEET \_\_\_\_\_ INCHES \_\_\_\_\_ FEET \_\_\_\_\_ INCHES

Formation	Color	Hard or Soft	Top	Bottom	Oil, Gas or Water	Depth Found	Remarks
Cow Run			707	725			
Total Depth				730			



AUG 12 1955

