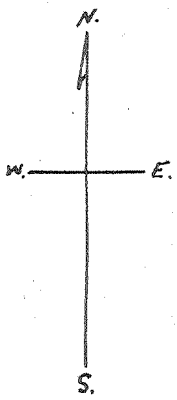
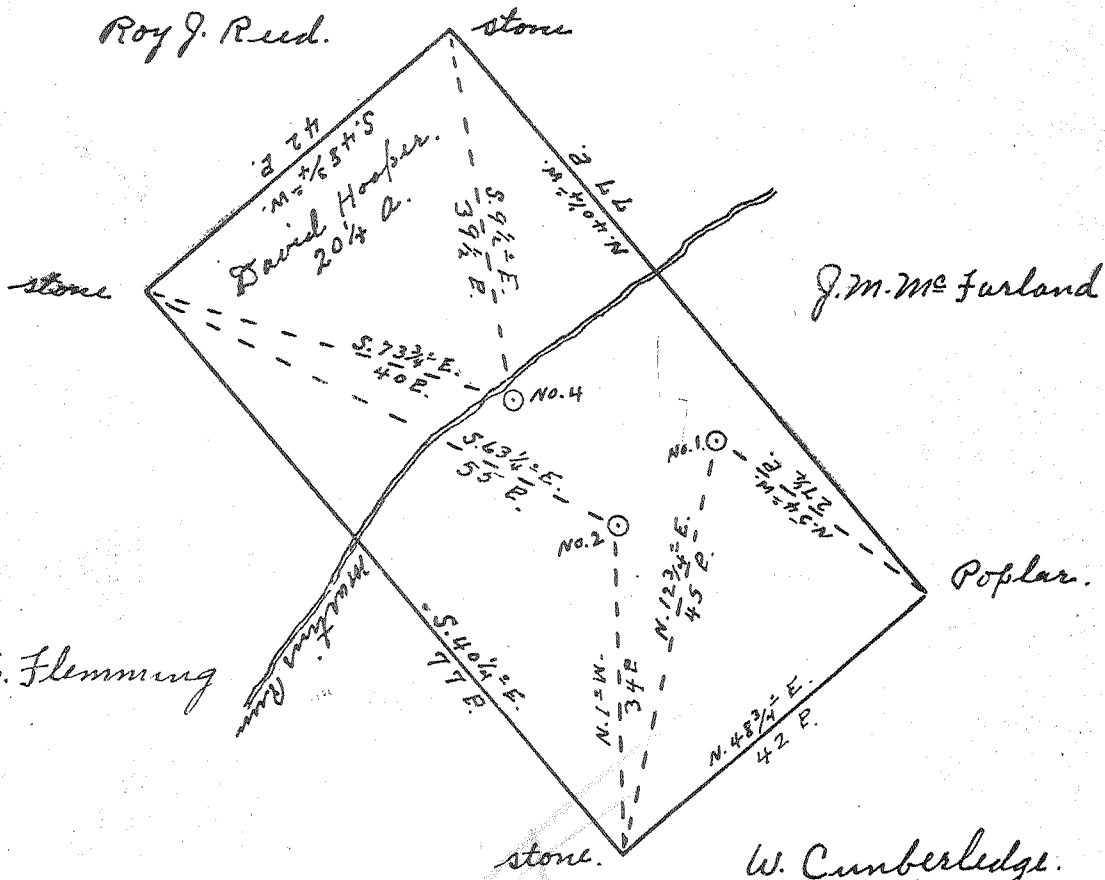


Latitude 39° 25'

Longitude 81° 05'



New Location...   
 Drill Deeper.....   
 Abandonment.....

AUG. 20 1958

# 4	0.18 W
# 1	0.12 W
# 2	0.11 W

Company Mackey & White  
 Address Raven Rock, W.Va.  
 Farm David Hooper  
 Tract \_\_\_\_\_ Acres 20 1/4 Lease No. \_\_\_\_\_  
 Well (Farm) No. 1, 2, 4 Serial No. \_\_\_\_\_  
 Elevation (Spirit Level) No. 1, 990', No. 2, 912', No. 4, 810'  
 Quadrangle St. Marys  
 County Pleasants District Lafayette  
 Engineer Robert R. Anderson  
By Jno Triplett, Surveyor  
 Engineer's Registration No. \_\_\_\_\_  
 File No. \_\_\_\_\_ Drawing No. 296  
 Date July 31, 1956 Scale 1" = 20 P.

STATE OF WEST VIRGINIA  
 DEPARTMENT OF MINES  
 OIL AND GAS DIVISION  
 CHARLESTON

WELL LOCATION MAP  
 FILE NO. PL 95-701-A

+ Denotes location of well on United States Topographic Maps, scale 1 to 62,500, latitude and longitude lines being represented by border lines as shown.

- Denotes one inch spaces on border line of original tracing.

DAVID HOOPER NO. 1, 2, 4 (?) - MACKAY & WHITE - PLEAS-701A



STATE OF WEST VIRGINIA  
DEPARTMENT OF MINES  
OIL AND GAS DIVISION

700

WELL RECORD

Permit No.                     

Oil or Gas Well (KIND)

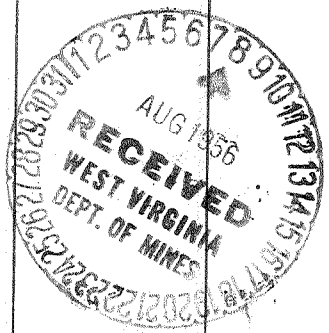
Company Mackey & White  
 Address Raven Rock, W.Va.  
 Farm David Hooper Acres 30 1/2  
 Location (waters) Martins Run  
 Well No. 4 Elev. 810  
 District Lafayette County Pleasants  
 The surface of tract is owned in fee by David Hooper hrs.  
St. Marys, W.Va. Address  
 Mineral rights are owned by Same  
 Address  
 Drilling commenced 1915  
 Drilling completed  
 Date Shot From To  
 With

Casing and Tubing	Used in Drilling	Left in Well	Packers
Size			
16			Kind of Packer
18			
10			Size of
8 1/4	160	160	
6 3/4	890 6 1/2	890	Depth set
5 3/16			
3			Perf. top
2	Tubing now pulled		Perf. bottom
Liners Used			Perf. top
			Perf. bottom

Open Flow /10ths Water in Inch  
 /10ths Merc. in Inch  
 Volume Cu. Ft.  
 Rock Pressure lbs. hrs.  
 Oil Now dry bbls., 1st 24 hrs.  
 Fresh water feet feet  
 Salt water feet feet

CASING CEMENTED SIZE No. Ft. Date  
 COAL WAS ENCOUNTERED AT FEET INCHES  
 FEET INCHES FEET INCHES  
 FEET INCHES FEET INCHES

Formation	Color	Hard or Soft	Top	Bottom	Oil, Gas or Water	Depth Found	Remarks
Big Red Cow Run	Sand	715 920 to 928 Bottom hole 930					



OCT 26 1956

