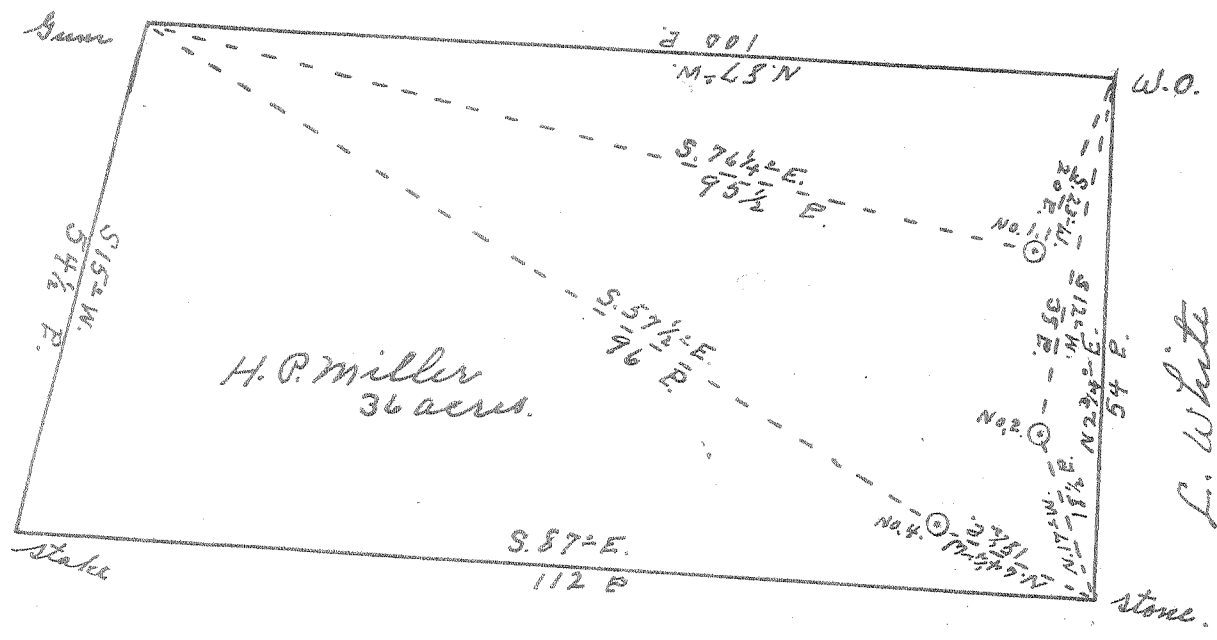


Latitude 39° 20'

Longitude 81° 10'

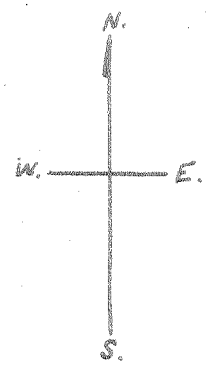
M. Miller

R. Hendrickson



H.P. Miller  
36 acres.

W. E. Ingram



#1	1.65 W
	0.23 Q
#2	1.68 W
	0.30 Q
#4	1.75 W
	0.37 Q

New Location...   
 Drill Deeper.....   
 Abandonment.....

DEC. 12. 1956

Company A. F. Marple  
 Address St. Marys, W. Va.  
 Farm H. P. Miller  
 Tract \_\_\_\_\_ Acres 36 Lease No. \_\_\_\_\_  
 Well (Farm) No. 1, 2 & 4 Serial No. \_\_\_\_\_  
 Elevation (Spirit Level) No. 1, 902', No. 2, 852', No. 4, 850'  
 Quadrangle St. Marys  
 County Pleasants District Jefferson  
 Engineer Robert R. Anderson  
 By Geo. Tribble, Surveyor  
 Engineer's Registration No. 236  
 File No. \_\_\_\_\_ Drawing No. \_\_\_\_\_  
 Date Nov. 10, 1956 Scale 1" = 20 P.

STATE OF WEST VIRGINIA  
 DEPARTMENT OF MINES  
 OIL AND GAS DIVISION  
 CHARLESTON

WELL LOCATION MAP

FILE NO. PLEAS-708-A-#1  
PLEAS-710-A-#4 PLEAS-709-A-#2  
 + Denotes location of well on United States Topographic Maps, scale 1 to 62,500, latitude and longitude lines being represented by border lines as shown.  
 - Denotes one inch spaces on border line of original tracing.



207

STATE OF WEST VIRGINIA  
DEPARTMENT OF MINES  
OIL AND GAS DIVISION

Quadrangle H. Marys  
Permit No. 708-A

WELL RECORD

Oil or Gas Well Oil  
(KIND)

Company A F Marple  
 Address St. Marys, W. Va.  
 Farm H P Miller Acres 37  
 Location (waters) French Creek  
 Well No. 1 Elev. 900  
 District Jefferson County Pleasants  
 The surface of tract is owned in fee by H P Miller  
Bartlesville, Okla. Address Route 1, Box 197  
 Mineral rights are owned by H P Miller  
 Address \_\_\_\_\_  
 Drilling commenced 1923  
 Drilling completed 1923  
 Date Shot \_\_\_\_\_ From \_\_\_\_\_ To \_\_\_\_\_  
 With \_\_\_\_\_  
 Open Flow /10ths Water in \_\_\_\_\_ Inch  
 /10ths Merc. in \_\_\_\_\_ Inch  
 Volume \_\_\_\_\_ Cu. Ft.  
 Rock Pressure \_\_\_\_\_ lbs. \_\_\_\_\_ hrs.  
 Oil 1 bbls., 1st 24 hrs.  
 WELL ACIDIZED \_\_\_\_\_  
 WELL FRACTURED \_\_\_\_\_

Casing and Tubing	Used in Drilling	Left in Well	Packers
Size			
16			Kind of Packer
13			
10			Size of
8 1/4			
6 1/2	901	901	Depth set
5 3/16			
3			Perf. top
2			Perf. bottom
Liners Used			Perf. top
			Perf. bottom

CASING CEMENTED \_\_\_\_\_ SIZE \_\_\_\_\_ No. Ft. \_\_\_\_\_ Date \_\_\_\_\_

COAL WAS ENCOUNTERED AT \_\_\_\_\_ FEET \_\_\_\_\_ INCHES  
 \_\_\_\_\_ FEET \_\_\_\_\_ INCHES \_\_\_\_\_ FEET \_\_\_\_\_ INCHES  
 \_\_\_\_\_ FEET \_\_\_\_\_ INCHES \_\_\_\_\_ FEET \_\_\_\_\_ INCHES

RESULT AFTER TREATMENT \_\_\_\_\_  
 ROCK PRESSURE AFTER TREATMENT \_\_\_\_\_  
 Fresh Water \_\_\_\_\_ Feet Salt Water \_\_\_\_\_ Feet

Formation	Color	Hard or Soft	Top	Bottom	Oil, Gas or Water	Depth	Remarks
Sand Cow Run		Hard	918	939	922	939	

