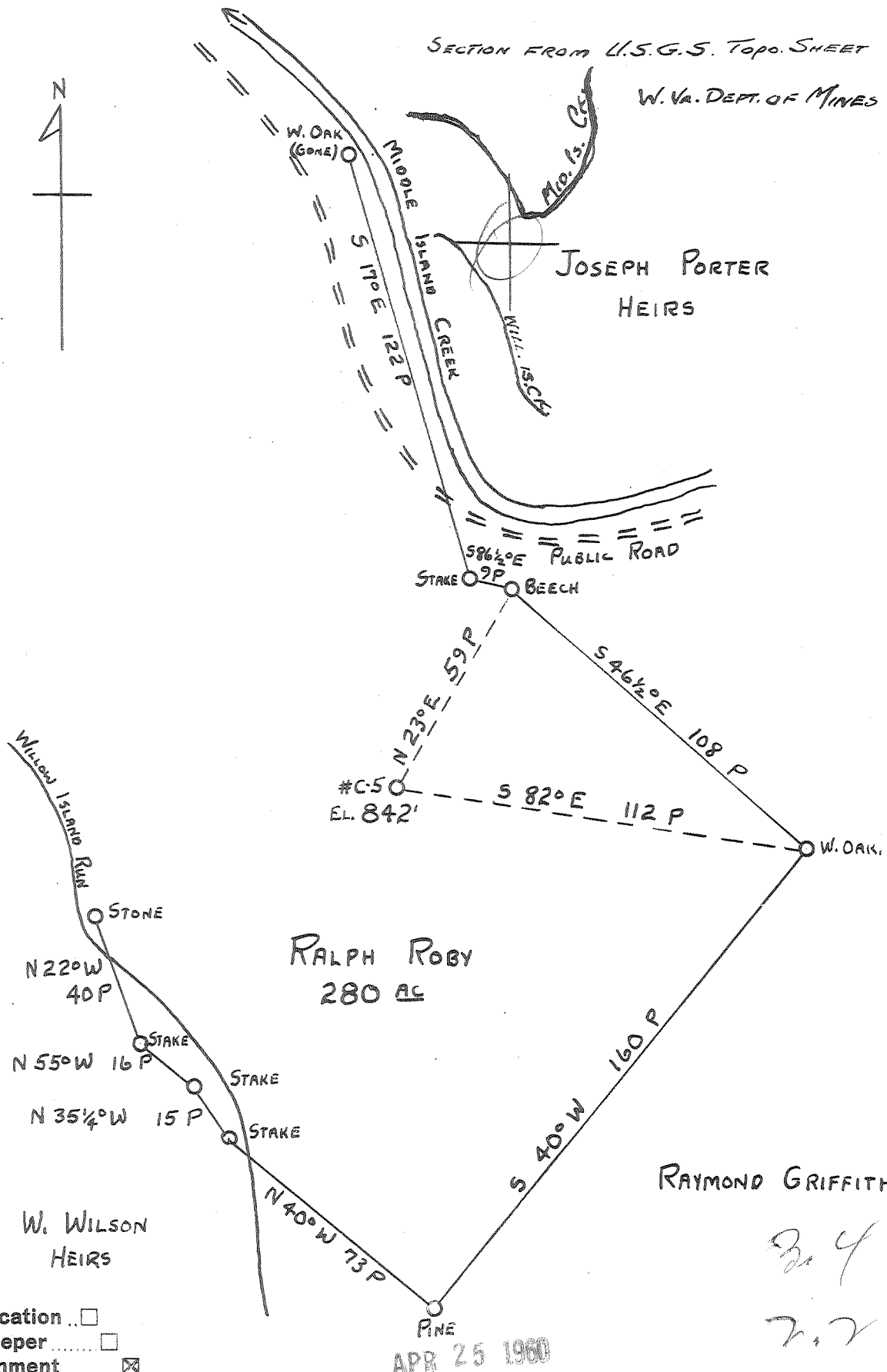


Latitude 3° 25'

Longitude 81° 05'



SECTION FROM U.S.G.S. Topo. SHEET 7ER
W.VA. DEPT. OF MINES REQUEST.



New Location
 Drill Deeper
 Abandonment

APR 25 1960

Handwritten signatures and initials:
 B. Y. CO
 Z. Z. [Signature]

Company HART & HAMILTON
 Address Box 26 ST. MARYS, W.VA.
 Farm RALPH ROBY
 Tract _____ Acres 280 Lease No. _____
 Well (Farm) No. C-5 Serial No. 41
 Elevation (Spirit Level) 842'
 Quadrangle ST. MARYS
 County PLEASANTS District MCKIM
 Engineer JOHN W. HAMILTON
 Engineer's Registration No. 2274
 File No. _____ Drawing No. _____
 Date 12-16-59 Scale 1" = 40 P

STATE OF WEST VIRGINIA
 DEPARTMENT OF MINES
 OIL AND GAS DIVISION
 CHARLESTON

WELL LOCATION MAP
 FILE NO. PLEAS-755-A

+ Denotes location of well on United States Topographic Maps, scale 1 to 62,500, latitude and longitude lines being represented by border lines as shown.
 - Denotes one inch spaces on border line of original tracing.

Handwritten title at bottom: RALPH ROBY No. C-5(A) - HART & HAMILTON - PLEAS-755-A