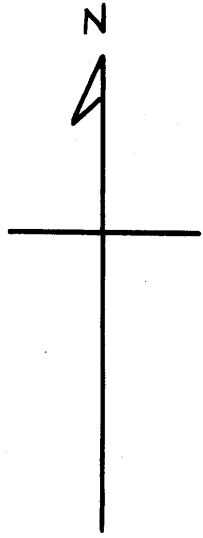


Latitude 39° 20'

Longitude 81° 10'

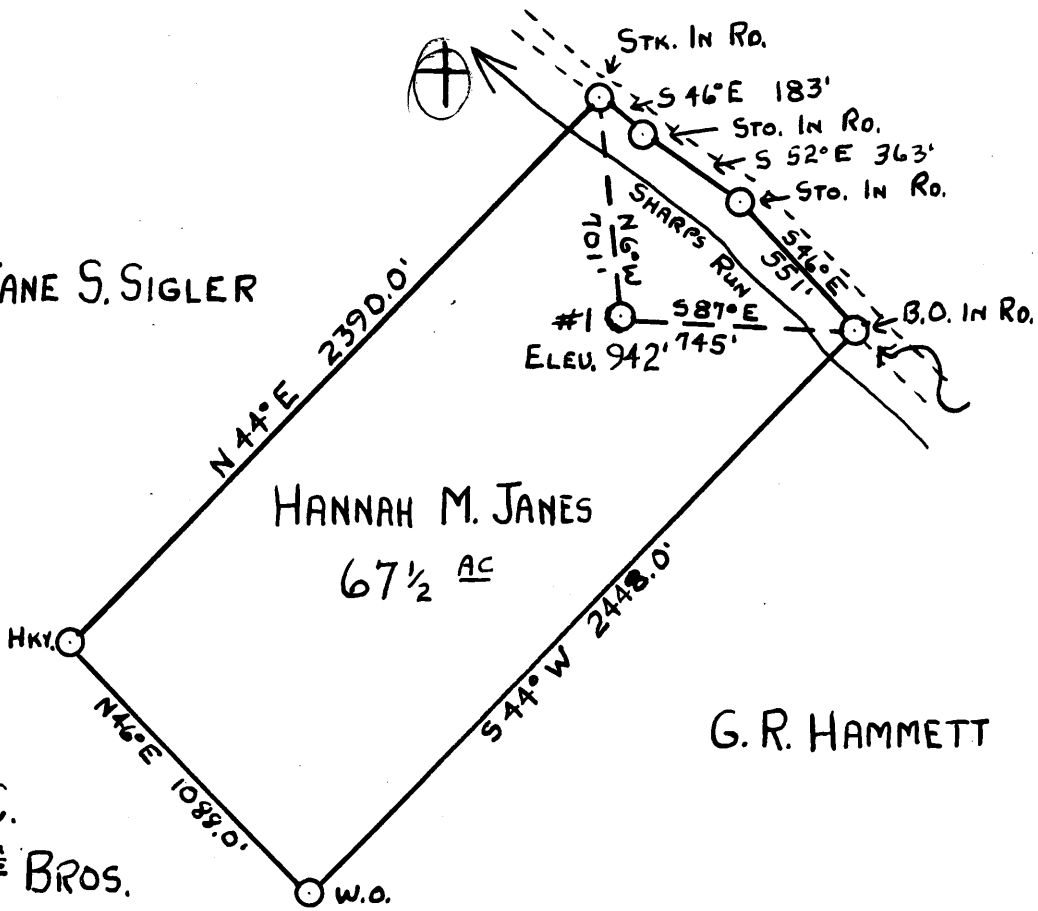


JANE S. SIGLER

HANNAH M. JANES
67 1/2 AC

G. R. HAMMETT

SAML. C.
HAMMETT & BROS.



New Location
 Drill Deeper
 Abandonment

APR 18 1960

3.7 W
 2.7

Company HART & HAMILTON
 Address Box 26 ST. MARYS, W. VA.
 Farm HANNAH M. JANES
 Tract _____ Acres 67 1/2 Lease No. _____
 Well (Farm) No. 1 Serial No. 59
 Elevation (Spirit Level) 942'
 Quadrangle ST. MARYS
 County PLEASANTS District JEFFERSON
 Engineer JOHN W. HAMILTON
 Engineer's Registration No. 2274
 File No. _____ Drawing No. _____
 Date 3-19-60 Scale 1" = 600'

STATE OF WEST VIRGINIA
 DEPARTMENT OF MINES
 OIL AND GAS DIVISION
 CHARLESTON

WELL LOCATION MAP

FILE NO. Pleas-769-A

+ Denotes location of well on United States Topographic Maps, scale 1 to 62,500, latitude and longitude lines being represented by border lines as shown.

- Denotes one inch spaces on border line of original tracing.

HANNAH M. JANES 67.5 AC. - HART & HAMILTON - PLEAS-769-A