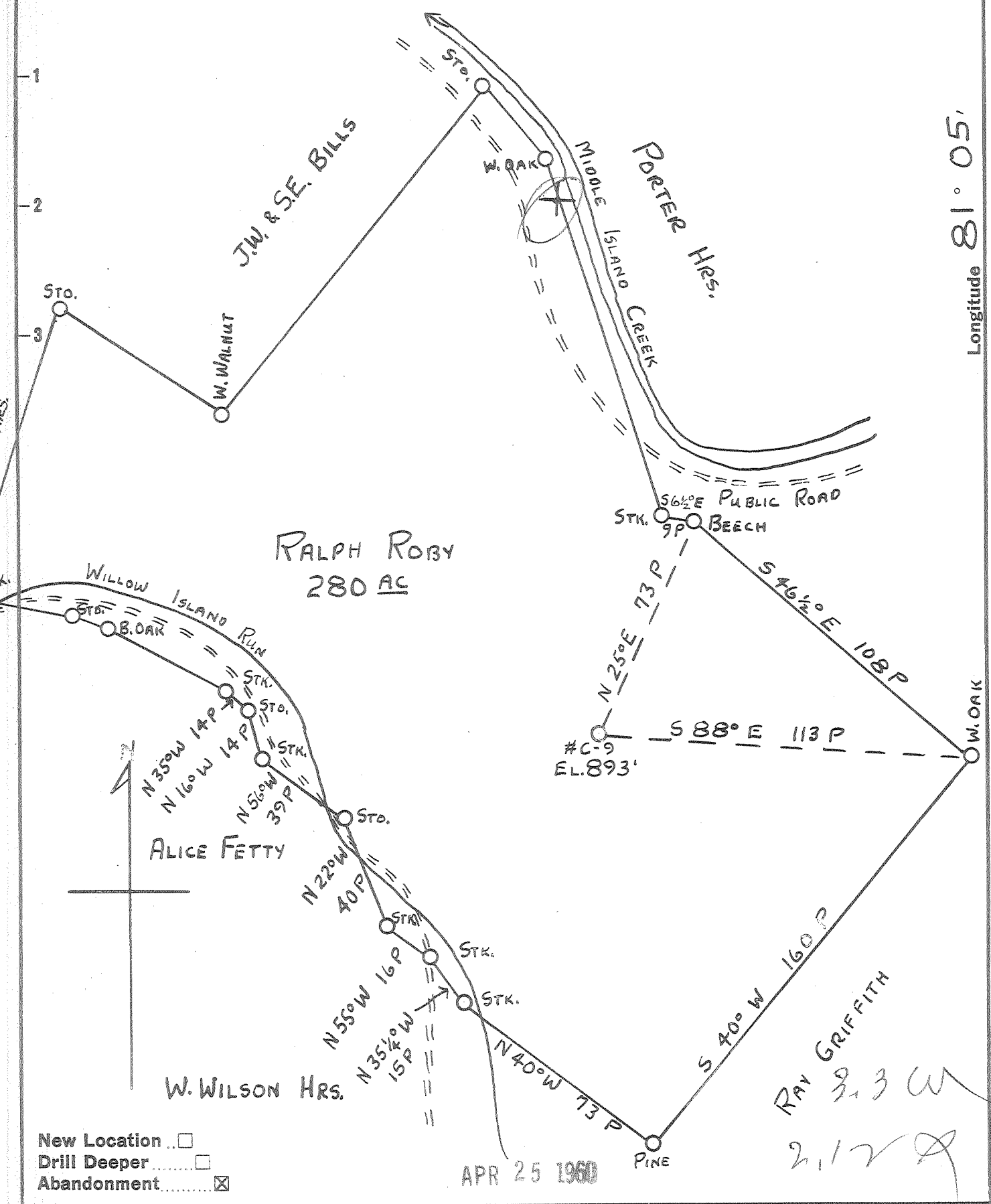


Latitude  $37^{\circ} 25'$

Longitude  $81^{\circ} 05'$



- New Location
- Drill Deeper
- Abandonment

APR 25 1960

RAY GRIFFITH  
3.3 W  
2,172

Company HART & HAMILTON  
 Address Box 26 ST. MARYS, W.VA.  
 Farm RALPH ROBY  
 Tract \_\_\_\_\_ Acres 280 Lease No. \_\_\_\_\_  
 Well (Farm) No. C-9 Serial No. 70  
 Elevation (Spirit Level) 893'  
 Quadrangle ST. MARYS  
 County PLEASANTS District McKIM  
 Engineer JOHN W. HAMILTON  
 Engineer's Registration No. 2274  
 File No. \_\_\_\_\_ Drawing No. \_\_\_\_\_  
 Date 3-26-60 Scale 1" = 40 P

STATE OF WEST VIRGINIA  
DEPARTMENT OF MINES  
OIL AND GAS DIVISION  
CHARLESTON

**WELL LOCATION MAP**  
FILE NO. PLEAS-778-A

+ Denotes location of well on United States Topographic Maps, scale 1 to 62,500, latitude and longitude lines being represented by border lines as shown.  
- Denotes one inch spaces on border line of original tracing.