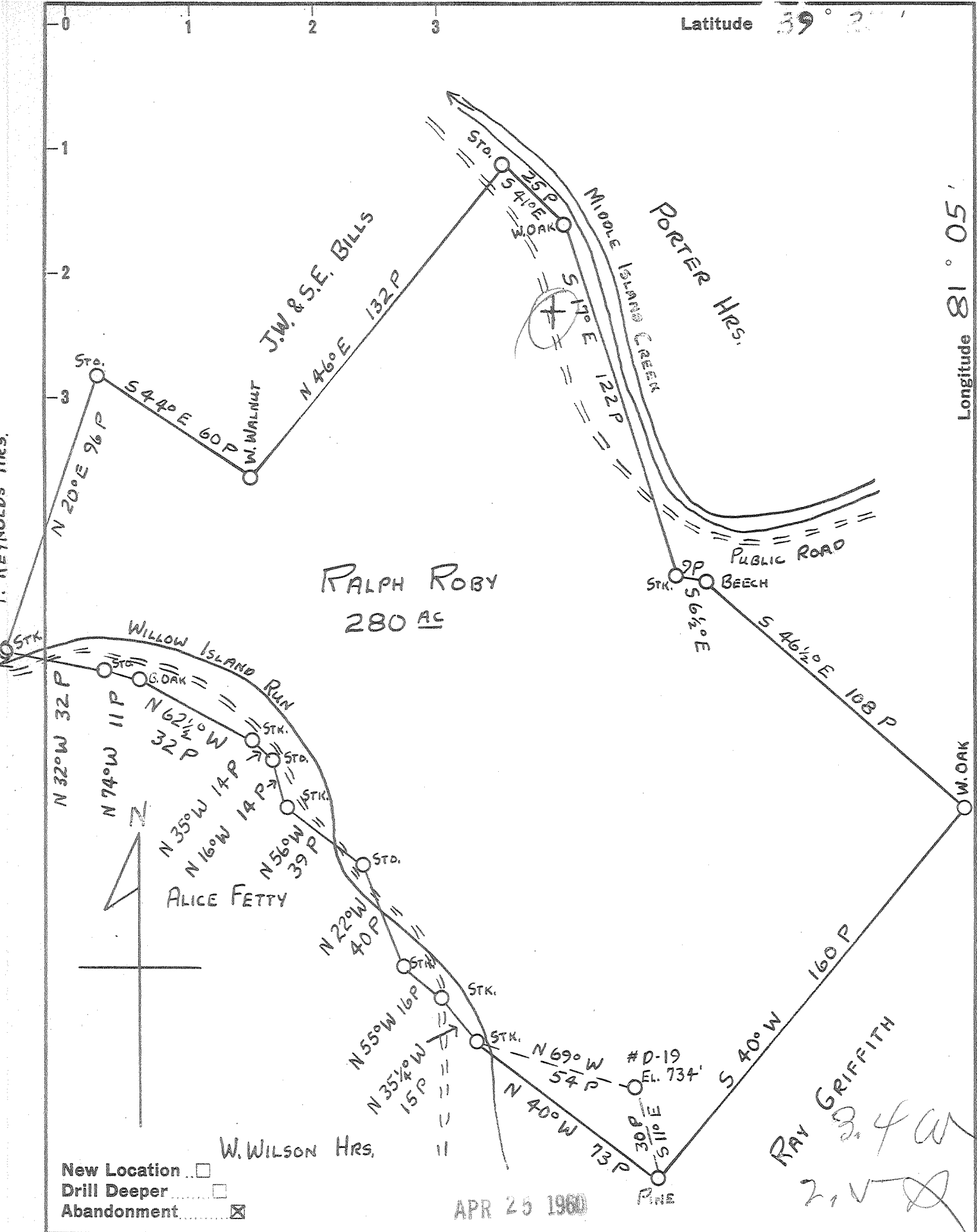


Latitude 39° 25'

Longitude 81° 05'



RALPH ROBY
280 AC

ALICE FETTY

W. WILSON HRS.

RAY GRIFFITH
B. 4 W
2, 1, 5

- New Location
- Drill Deeper
- Abandonment

APR 25 1960

Company	HART & HAMILTON
Address	Box 26 ST. MARYS, W. VA.
Farm	RALPH ROBY
Tract	Acres 280 Lease No.
Well (Farm) No.	D-19 Serial No. 71
Elevation (Spirit Level)	734'
Quadrangle	ST. MARYS
County	PLEASANTS District MCKIM
Engineer	JOHN W. HAMILTON
Engineer's Registration No.	2274
File No.	Drawing No.
Date	3-26-60 Scale 1" = 40 P

STATE OF WEST VIRGINIA
DEPARTMENT OF MINES
OIL AND GAS DIVISION
CHARLESTON

WELL LOCATION MAP
FILE NO. PLEAS-780-A

- + Denotes location of well on United States Topographic Maps, scale 1 to 62,500, latitude and longitude lines being represented by border lines as shown.
- Denotes one inch spaces on border line of original tracing.

RALPH ROBY, No. D-19(71) - HART & HAMILTON - PLEAS-780-A