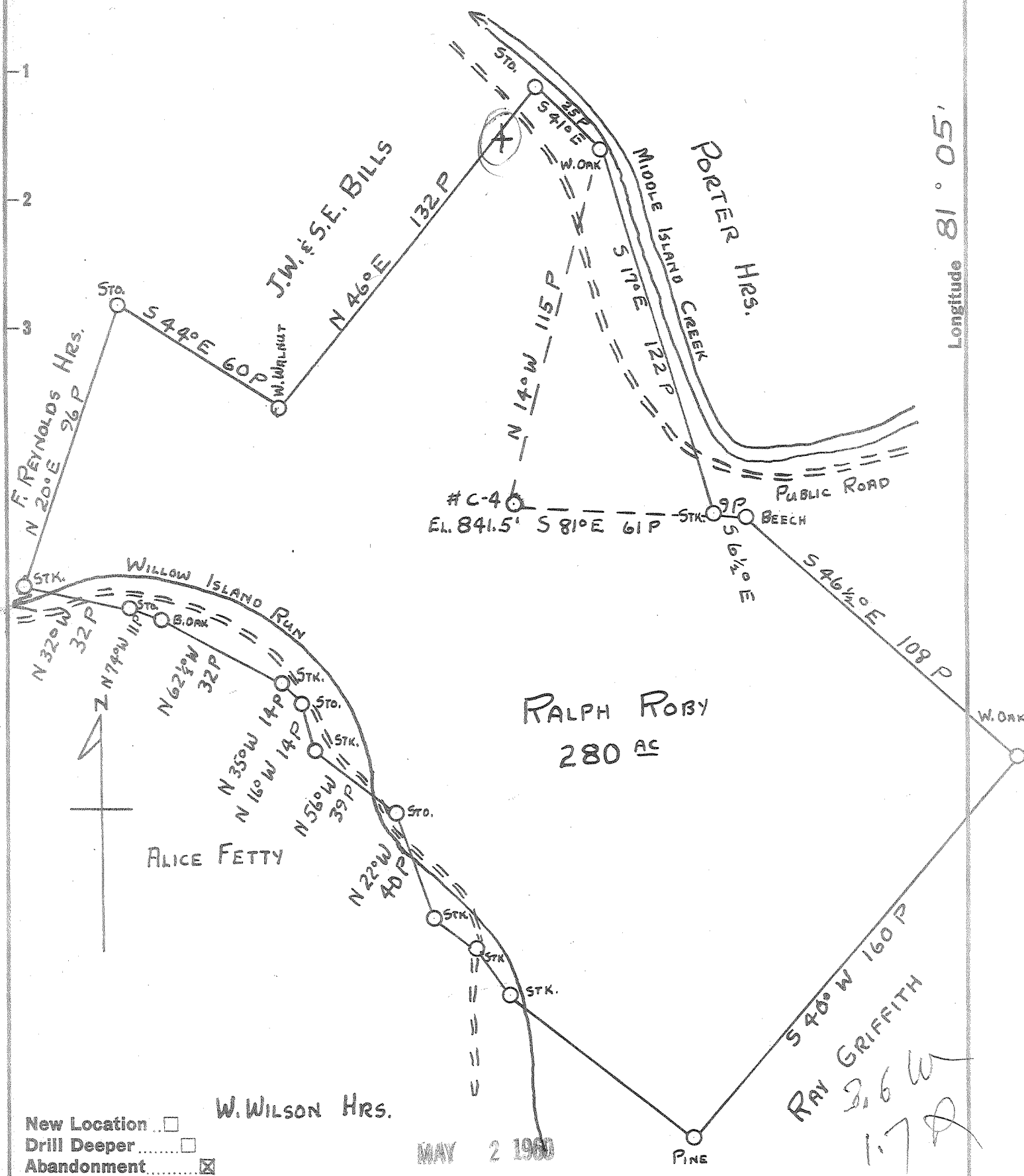


Latitude 39° 25'

Longitude 81° 05'



New Location
 Drill Deeper
 Abandonment

W. WILSON HRS.

MAY 2 1960

RAY GRIFFITH
 2.6 W
 1.7 P

Company	HART & HAMILTON
Address	Box 26 ST. MARYS, W. VA.
Farm	RALPH ROBY
Tract	Acres 280 Lease No.
Well (Farm) No.	C-4 Serial No. 76
Elevation (Spirit Level)	841.5'
Quadrangle	ST. MARYS
County	PLEASANTS District MEKIM
Engineer	JOHN W. HAMILTON
Engineer's Registration No.	2274
File No.	Drawing No.
Date	3-28-60 Scale 1" = 40 P

STATE OF WEST VIRGINIA
 DEPARTMENT OF MINES
 OIL AND GAS DIVISION
 CHARLESTON

WELL LOCATION MAP
 FILE NO. PLEAS-787-A

+ Denotes location of well on United States Topographic Maps, scale 1 to 62,500, latitude and longitude lines being represented by border lines as shown.
 = Denotes one inch spaces on border line of original tracing.

RALPH ROBY No. C-4(76) - HART & HAMILTON - PLEAS-787-A