

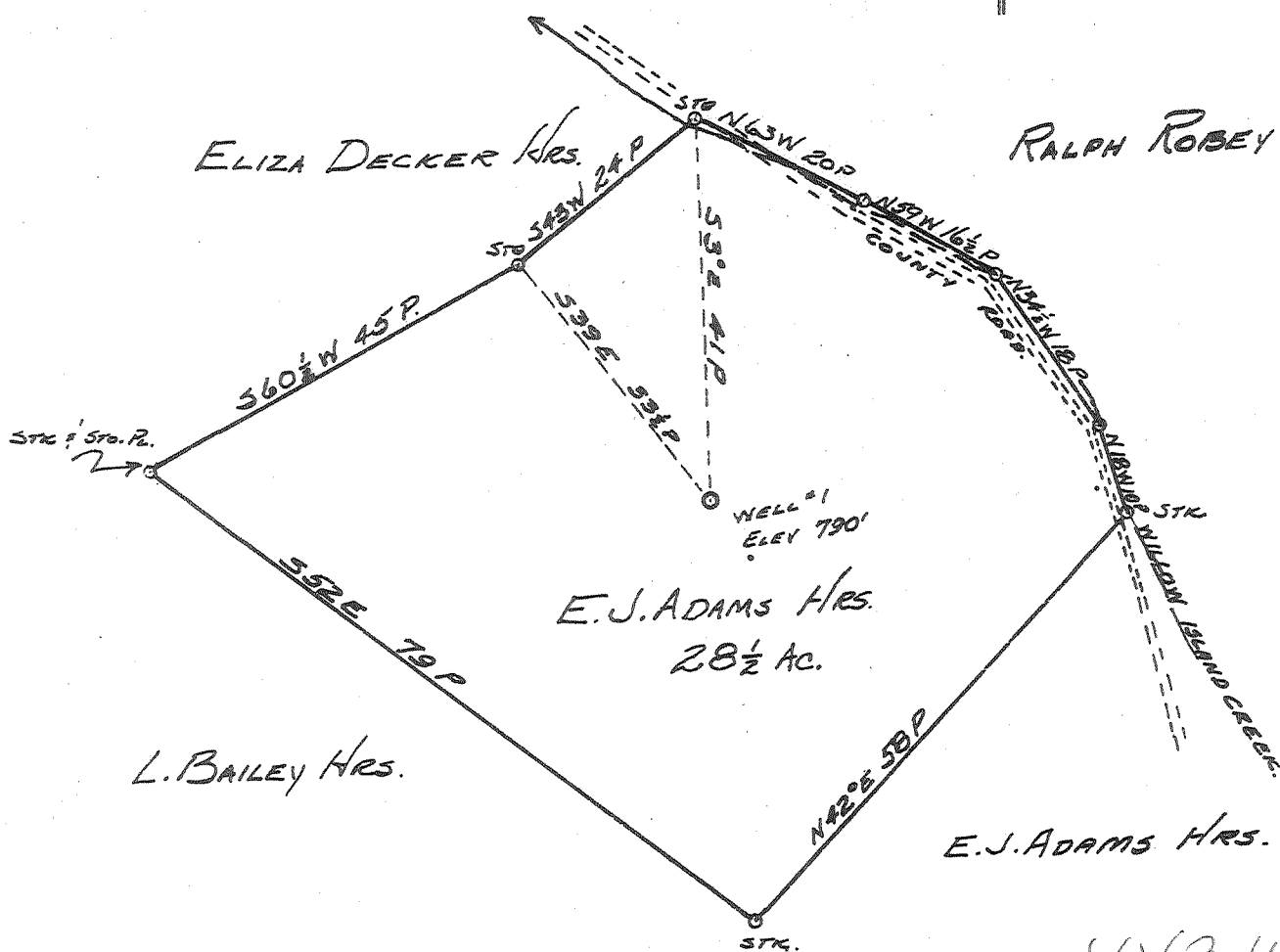
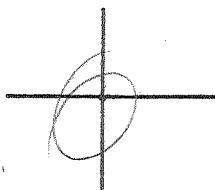
0 1 2 3

Latitude 39° 25'

1  
2  
3

Longitude 81° 05'

NORTH



4.43 W  
1.92 Q

ABANDONMENT

MAY 17 1960

Company HART & HAMILTON  
 Address ST. MARYS, W. VA.  
 Farm E. J. ADAMS HRS.  
 Tract \_\_\_\_\_ Acres 28 1/2 Lease No. 123  
 Well (Farm) No. 1 Serial No. 94  
 Elevation (Spirit Level) 790 FT.  
 Quadrangle ST. MARYS  
 County PLEASANTS District McKIM  
 Engineer JOHN W. HAMILTON  
 Engineer's Registration No. 2274  
 File No. \_\_\_\_\_ Drawing No. \_\_\_\_\_  
 Date MAY 1, 1960 Scale 1" = 20 P

STATE OF WEST VIRGINIA  
DEPARTMENT OF MINES  
OIL AND GAS DIVISION  
CHARLESTON

WELL LOCATION MAP  
FILE NO. PLEAS-791-A

+ Denotes location of well on United States Topographic Maps, scale 1 to 62,500, latitude and longitude lines being represented by border lines as shown.

- Denotes one inch spaces on border line of original tracing.

E. J. ADAMS HEIRS No. 1 (JA) - HART & HAMILTON - PLEAS-791-A